

Product datasheet for **CF501847**

MICAL1 Mouse Monoclonal Antibody [Clone ID: OTI4D1]

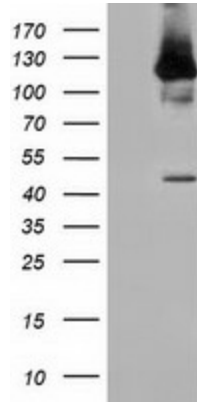
Product data:

Product Type:	Primary Antibodies
Clone Name:	OTI4D1
Applications:	FC, IF, WB
Recommended Dilution:	WB 1:500, IF 1:100, FLOW 1:100
Reactivity:	Human
Host:	Mouse
Isotype:	IgG2a
Clonality:	Monoclonal
Immunogen:	Full length human recombinant protein of human MICAL1 (NP_073602) produced in HEK293T cell.
Formulation:	Lyophilized powder (original buffer 1X PBS, pH 7.3, 8% trehalose)
Reconstitution Method:	For reconstitution, we recommend adding 100uL distilled water to a final antibody concentration of about 1 mg/mL. To use this carrier-free antibody for conjugation experiment, we strongly recommend performing another round of desalting process. (OriGene recommends Zeba Spin Desalting Columns, 7KMWCO from Thermo Scientific)
Purification:	Purified from mouse ascites fluids or tissue culture supernatant by affinity chromatography (protein A/G)
Conjugation:	Unconjugated
Storage:	Store at -20°C as received.
Stability:	Stable for 12 months from date of receipt.
Predicted Protein Size:	117.7 kDa
Gene Name:	microtubule associated monooxygenase, calponin and LIM domain containing 1
Database Link:	NP_073602 Entrez Gene 64780 Human Q8TDZ2
Background:	May be a cytoskeletal regulator that connects NEDD9 to intermediate filaments
Synonyms:	MICAL; MICAL-1; NICAL

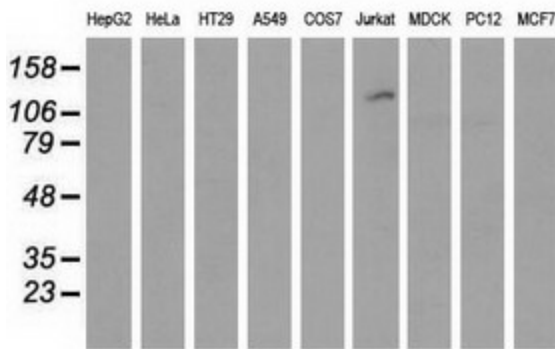


[View online »](#)

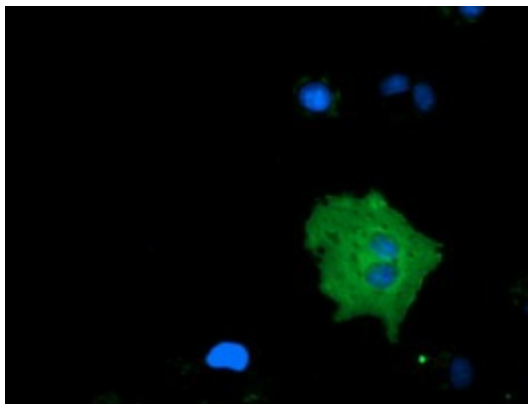
Product images:



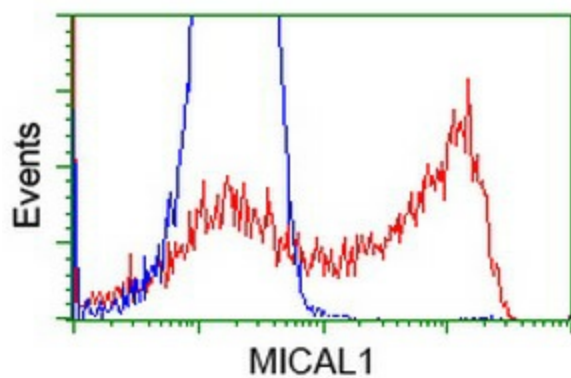
HEK293T cells were transfected with the pCMV6-ENTRY control (Left lane) or pCMV6-ENTRY MICAL1 ([RC208308], Right lane) cDNA for 48 hrs and lysed. Equivalent amounts of cell lysates (5 ug per lane) were separated by SDS-PAGE and immunoblotted with anti-MICAL1. Positive lysates [LY402940] (100ug) and [LC402940] (20ug) can be purchased separately from OriGene.



Western blot analysis of extracts (35ug) from 9 different cell lines by using anti-MICAL1 monoclonal antibody.



Anti-MICAL1 mouse monoclonal antibody ([TA501847]) immunofluorescent staining of COS7 cells transiently transfected by pCMV6-ENTRY MICAL1 ([RC208308]).



HEK293T cells transfected with either [RC208308] overexpress plasmid (Red) or empty vector control plasmid (Blue) were immunostained by anti-MICAL1 antibody ([TA501847]), and then analyzed by flow cytometry.