

Product datasheet for **CF501840**

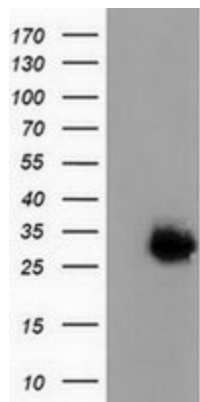
PBLD Mouse Monoclonal Antibody [Clone ID: OTI4A5]

Product data:

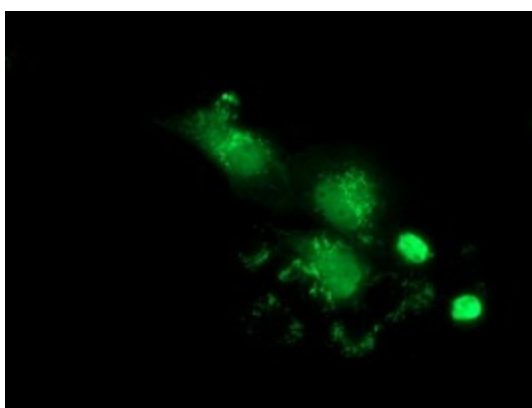
Product Type:	Primary Antibodies
Clone Name:	OTI4A5
Applications:	IF, WB
Recommended Dilution:	WB 1:2000, IF 1:100
Reactivity:	Human
Host:	Mouse
Isotype:	IgG2b
Clonality:	Monoclonal
Immunogen:	Full length human recombinant protein of human PBLD (NP_071412) produced in HEK293T cell.
Formulation:	Lyophilized powder (original buffer 1X PBS, pH 7.3, 8% trehalose)
Reconstitution Method:	For reconstitution, we recommend adding 100uL distilled water to a final antibody concentration of about 1 mg/mL. To use this carrier-free antibody for conjugation experiment, we strongly recommend performing another round of desalting process. (OriGene recommends Zeba Spin Desalting Columns, 7KMWCO from Thermo Scientific)
Purification:	Purified from mouse ascites fluids or tissue culture supernatant by affinity chromatography (protein A/G)
Conjugation:	Unconjugated
Storage:	Store at -20°C as received.
Stability:	Stable for 12 months from date of receipt.
Predicted Protein Size:	31.6 kDa
Gene Name:	Homo sapiens phenazine biosynthesis like protein domain containing (PBLD), transcript variant 1, mRNA.
Database Link:	NP_071412 Entrez Gene 64081 Human
Synonyms:	HEL-S-306; MAWBP; MAWDBP



[View online »](#)

Product images:

HEK293T cells were transfected with the pCMV6-ENTRY control (Left lane) or pCMV6-ENTRY PBLD ([RC202328], Right lane) cDNA for 48 hrs and lysed. Equivalent amounts of cell lysates (5 ug per lane) were separated by SDS-PAGE and immunoblotted with anti-PBLD. Positive lysates [LY411757] (100ug) and [LC411757] (20ug) can be purchased separately from OriGene.



Anti-PBLD mouse monoclonal antibody ([TA501840]) immunofluorescent staining of COS7 cells transiently transfected by pCMV6-ENTRY PBLD ([RC202328]).