

Product datasheet for **CF501812**

PIK3AP1 Mouse Monoclonal Antibody [Clone ID: OTI7A11]

Product data:

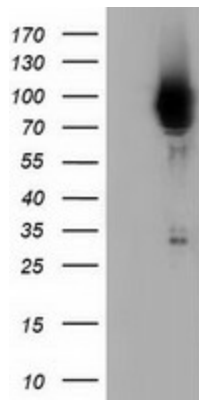
Product Type:	Primary Antibodies
Clone Name:	OTI7A11
Applications:	FC, IF, IHC, WB
Recommended Dilution:	WB 1:2000, IHC 1:150, IF 1:100, FLOW 1:100
Reactivity:	Human, Mouse, Rat
Host:	Mouse
Isotype:	IgG1
Clonality:	Monoclonal
Immunogen:	Full length human recombinant protein of human PIK3AP1 (NP_689552) produced in HEK293T cell.
Formulation:	Lyophilized powder (original buffer 1X PBS, pH 7.3, 8% trehalose)
Reconstitution Method:	For reconstitution, we recommend adding 100uL distilled water to a final antibody concentration of about 1 mg/mL. To use this carrier-free antibody for conjugation experiment, we strongly recommend performing another round of desalting process. (OriGene recommends Zeba Spin Desalting Columns, 7KMWCO from Thermo Scientific)
Purification:	Purified from mouse ascites fluids or tissue culture supernatant by affinity chromatography (protein A/G)
Conjugation:	Unconjugated
Storage:	Store at -20°C as received.
Stability:	Stable for 12 months from date of receipt.
Predicted Protein Size:	90.2 kDa
Gene Name:	phosphoinositide-3-kinase adaptor protein 1
Database Link:	NP_689522 Entrez Gene 294048 Rat Entrez Gene 118788 Human Q6ZUJ8
Synonyms:	BCAP
Protein Families:	Druggable Genome



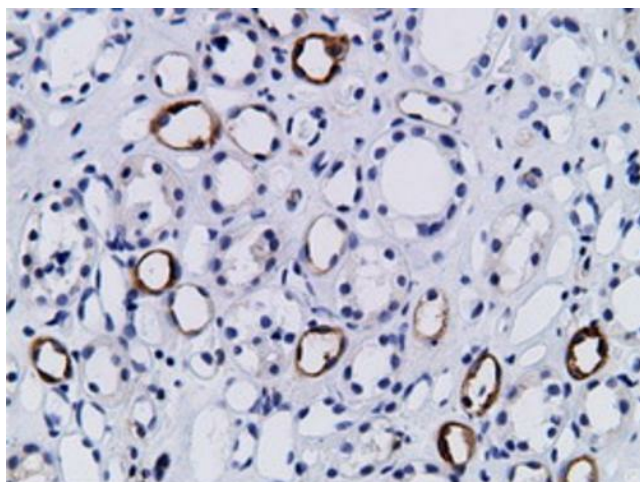
[View online »](#)

Protein Pathways: B cell receptor signaling pathway

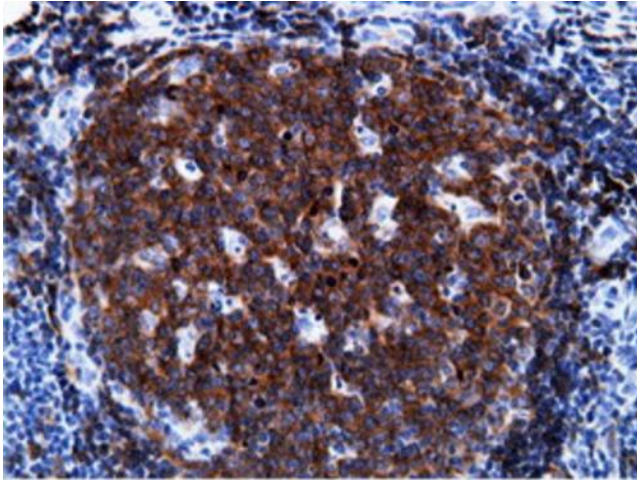
Product images:



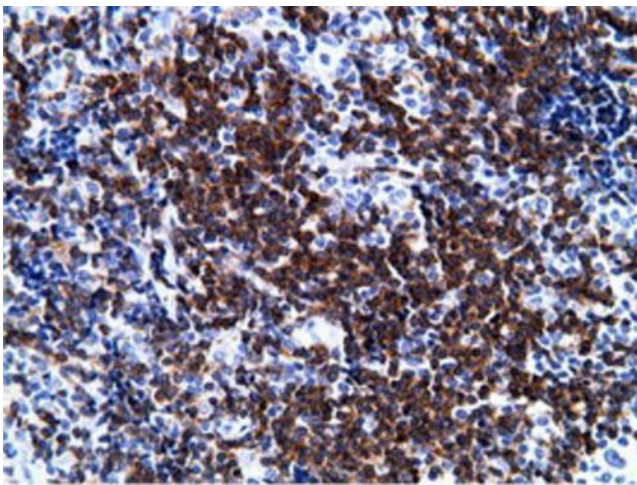
HEK293T cells were transfected with the pCMV6-ENTRY control (Cat# [PS100001], Left lane) or pCMV6-ENTRY PIK3AP1 (Cat# [RC214125], Right lane) cDNA for 48 hrs and lysed. Equivalent amounts of cell lysates (5 ug per lane) were separated by SDS-PAGE and immunoblotted with anti-PIK3AP1 (Cat# [TA501812]). Positive lysates [LY403461] (100ug) and [LC403461] (20ug) can be purchased separately from OriGene.



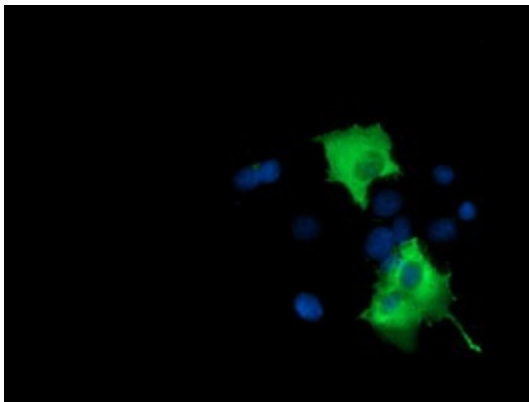
Immunohistochemical staining of paraffin-embedded Human Kidney tissue within the normal limits using anti-PIK3AP1 mouse monoclonal antibody. Heat-induced epitope retrieval by EDTA solution buffer pH 8.0 at 120°C for 3 min.



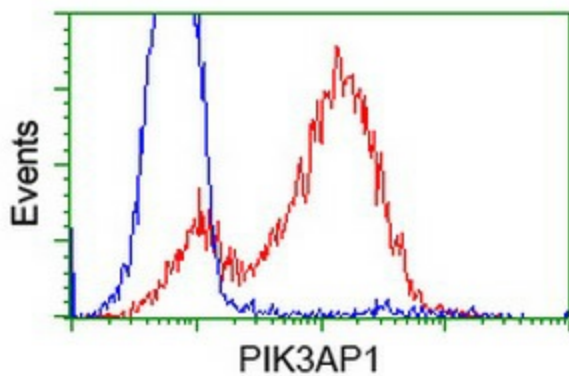
Immunohistochemical staining of paraffin-embedded Human lymph node tissue within the normal limits using anti-PIK3AP1 mouse monoclonal antibody. Heat-induced epitope retrieval by EDTA solution buffer pH 8.0 at 120°C for 3 min.



Immunohistochemical staining of paraffin-embedded Human lymphoma tissue using anti-PIK3AP1 mouse monoclonal antibody. Heat-induced epitope retrieval by EDTA solution buffer pH 8.0 at 120°C for 3 min.



Anti-PIK3AP1 mouse monoclonal antibody ([TA501812]) immunofluorescent staining of COS7 cells transiently transfected by pCMV6-ENTRY PIK3AP1 ([RC214125]).



HEK293T cells transfected with either [RC214125] overexpress plasmid (Red) or empty vector control plasmid (Blue) were immunostained by anti-PIK3AP1 antibody ([TA501812]), and then analyzed by flow cytometry.