

## Product datasheet for **CF501788**

### alpha 1 Fetoprotein (AFP) Mouse Monoclonal Antibody [Clone ID: OTI2E2]

#### Product data:

|                         |  |
|-------------------------|--|
| Product Type:           | Primary Antibodies   |
| Clone Name:             | OTI2E2   |
| Applications:           | FC, IF, WB   |
| Recommended Dilution:   | WB: 1:200 - 1:1000, IF 1:100, FLOW 1:100   |
| Reactivity:             | Human  |
| Host:                   | Mouse  |
| Isotype:                | IgG2a  |
| Clonality:              | Monoclonal   |
| Immunogen:              | Full length human recombinant protein of human AFP (NP_001125) produced in HEK293T cell.   |
| Formulation:            | Lyophilized powder (original buffer 1X PBS, pH 7.3, 8% trehalose)  |
| Reconstitution Method:  | For reconstitution, we recommend adding 100uL distilled water to a final antibody concentration of about 1 mg/mL. To use this carrier-free antibody for conjugation experiment, we strongly recommend performing another round of desalting process. (OriGene recommends Zeba Spin Desalting Columns, 7KMWCO from Thermo Scientific) |
| Purification:           | Purified from mouse ascites fluids or tissue culture supernatant by affinity chromatography (protein A/G)  |
| Conjugation:            | Unconjugated   |
| Storage:                | Store at -20°C as received.  |
| Stability:              | Stable for 12 months from date of receipt.   |
| Predicted Protein Size: | 66.3 kDa   |
| Gene Name:              | alpha fetoprotein  |
| Database Link:          | <a href="#">NP_001125</a><br><a href="#">Entrez Gene 174 Human</a><br><a href="#">P02771</a>   |



[View online »](#)

**Background:**

This gene encodes alpha-fetoprotein, a major plasma protein produced by the yolk sac and the liver during fetal life. Alpha-fetoprotein expression in adults is often associated with hepatoma or teratoma. However, hereditary persistence of alpha-fetoprotein may also be found in individuals with no obvious pathology. The protein is thought to be the fetal counterpart of serum albumin, and the alpha-fetoprotein and albumin genes are present in tandem in the same transcriptional orientation on chromosome 4. Alpha-fetoprotein is found in monomeric as well as dimeric and trimeric forms, and binds copper, nickel, fatty acids and bilirubin. The level of alpha-fetoprotein in amniotic fluid is used to measure renal loss of protein to screen for spina bifida and anencephaly. [provided by RefSeq]

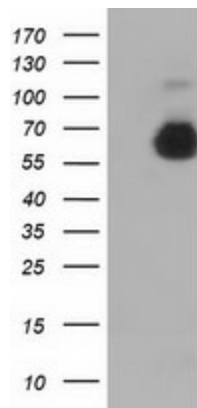
**Synonyms:**

AFPD; FETA; HPAFP

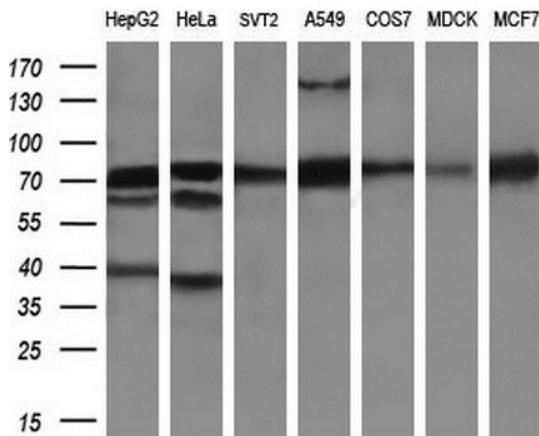
**Protein Families:**

Druggable Genome, Secreted Protein

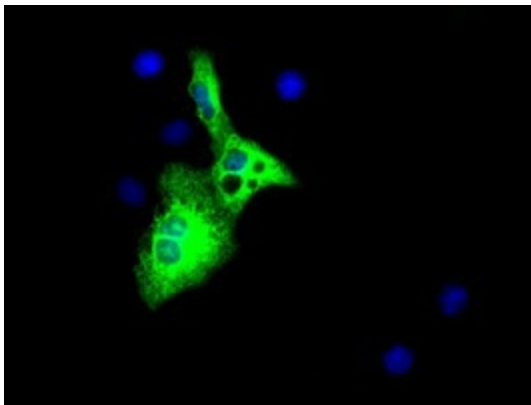
**Product images:**



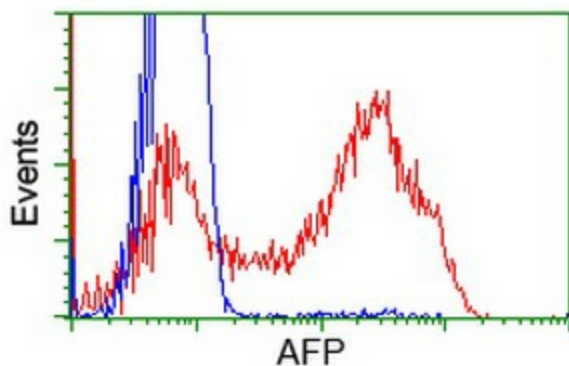
HEK293T cells were transfected with the pCMV6-ENTRY control (Left lane) or pCMV6-ENTRY AFP ([RC206622], Right lane) cDNA for 48 hrs and lysed. Equivalent amounts of cell lysates (5 ug per lane) were separated by SDS-PAGE and immunoblotted with anti-AFP. Positive lysates [LY400455] (100ug) and [LC400455] (20ug) can be purchased separately from OriGene.



Western blot analysis of extracts (10ug) from 7 different cell lines by using anti-AFP monoclonal antibody (1:200).



Anti-AFP mouse monoclonal antibody ([TA501788]) immunofluorescent staining of COS7 cells transiently transfected by pCMV6-ENTRY AFP ([RC206622]).



HEK293T cells transfected with either [RC206622] overexpress plasmid (Red) or empty vector control plasmid (Blue) were immunostained by anti-AFP antibody ([TA501788]), and then analyzed by flow cytometry.