

## Product datasheet for **CF501769**

### **RND1 Mouse Monoclonal Antibody [Clone ID: OTI4F12]**

#### **Product data:**

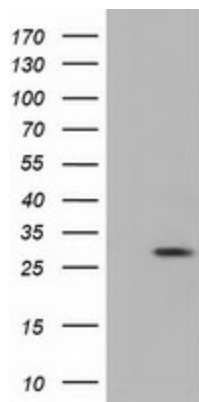
<b>Product Type:</b>	Primary Antibodies
<b>Clone Name:</b>	OTI4F12
<b>Applications:</b>	FC, IF, WB
<b>Recommended Dilution:</b>	WB 1:2000, IF 1:100, FLOW 1:100
<b>Reactivity:</b>	Human, Mouse, Rat
<b>Host:</b>	Mouse
<b>Isotype:</b>	IgG1
<b>Clonality:</b>	Monoclonal
<b>Immunogen:</b>	Full length human recombinant protein of human RND1 (NP_055285) produced in HEK293T cell.
<b>Formulation:</b>	Lyophilized powder (original buffer 1X PBS, pH 7.3, 8% trehalose)
<b>Reconstitution Method:</b>	For reconstitution, we recommend adding 100uL distilled water to a final antibody concentration of about 1 mg/mL. To use this carrier-free antibody for conjugation experiment, we strongly recommend performing another round of desalting process. (OriGene recommends Zeba Spin Desalting Columns, 7KMWCO from Thermo Scientific)
<b>Purification:</b>	Purified from mouse ascites fluids or tissue culture supernatant by affinity chromatography (protein A/G)
<b>Conjugation:</b>	Unconjugated
<b>Storage:</b>	Store at -20°C as received.
<b>Stability:</b>	Stable for 12 months from date of receipt.
<b>Predicted Protein Size:</b>	25.9 kDa
<b>Gene Name:</b>	Rho family GTPase 1
<b>Database Link:</b>	<a href="#">NP_055285</a> <a href="#">Entrez Gene 27289 Human Q92730</a>
<b>Background:</b>	Members of the Rho GTPase family, such as RND1, regulate the organization of the actin cytoskeleton in response to extracellular growth factors (Nobes et al., 1998 [PubMed 9531558]). [supplied by OMIM]



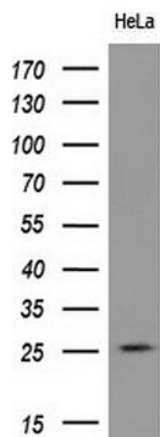
[View online >](#)

**Synonyms:** ARHS; RHO6; RHOS  
**Protein Families:** Stem cell - Pluripotency  
**Protein Pathways:** Axon guidance

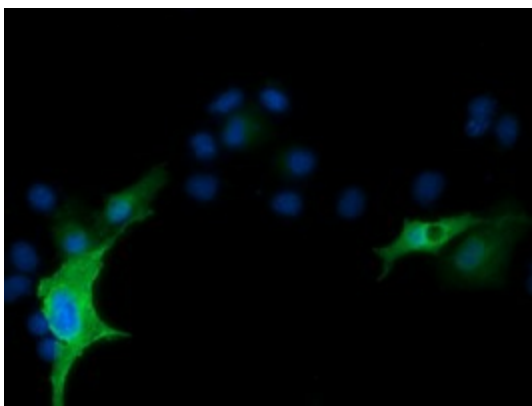
### Product images:



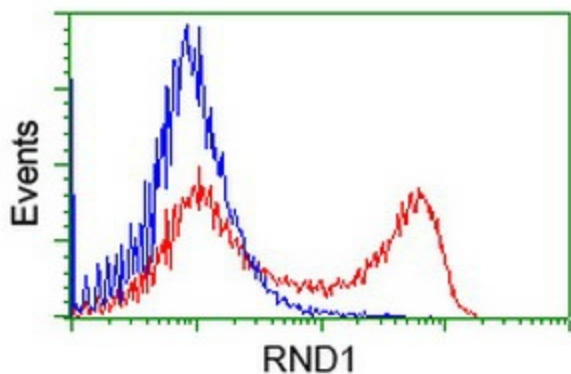
HEK293T cells were transfected with the pCMV6-ENTRY control (Left lane) or pCMV6-ENTRY RND1 ([RC205535], Right lane) cDNA for 48 hrs and lysed. Equivalent amounts of cell lysates (5 ug per lane) were separated by SDS-PAGE and immunoblotted with anti-RND1. Positive lysates [LY415252] (100ug) and [LC415252] (20ug) can be purchased separately from OriGene.



Western blot analysis of extracts (10ug) from 1 cell line by using anti-RND1 monoclonal antibody (1:200).



Western blot analysis of extracts (10ug) from HeLa cell line by using anti-RND1 monoclonal antibody (1:200).



HEK293T cells transfected with either [RC205535] overexpress plasmid (Red) or empty vector control plasmid (Blue) were immunostained by anti-RND1 antibody ([TA501769]), and then analyzed by flow cytometry.