

## Product datasheet for **CF501765**

### NEK11 Mouse Monoclonal Antibody [Clone ID: OTI5D9]

#### Product data:

Product Type:	Primary Antibodies
Clone Name:	OTI5D9
Applications:	IF, IHC, WB
Recommended Dilution:	WB 1:2000, IHC 1:150, IF 1:100
Reactivity:	Human
Host:	Mouse
Isotype:	IgG1
Clonality:	Monoclonal
Immunogen:	Full length human recombinant protein of human NEK11(NP_079076) produced in HEK293T cell.
Formulation:	Lyophilized powder (original buffer 1X PBS, pH 7.3, 8% trehalose)
Reconstitution Method:	For reconstitution, we recommend adding 100uL distilled water to a final antibody concentration of about 1 mg/mL. To use this carrier-free antibody for conjugation experiment, we strongly recommend performing another round of desalting process. (OriGene recommends Zeba Spin Desalting Columns, 7KMWCO from Thermo Scientific)
Purification:	Purified from mouse ascites fluids or tissue culture supernatant by affinity chromatography (protein A/G)
Conjugation:	Unconjugated
Storage:	Store at -20°C as received.
Stability:	Stable for 12 months from date of receipt.
Predicted Protein Size:	74 kDa
Gene Name:	Homo sapiens NIMA related kinase 11 (NEK11), transcript variant 1, mRNA.
Database Link:	<a href="#">NP_079076</a> <a href="#">Entrez Gene 79858 Human</a> <a href="#">Q8NG66</a>



[View online »](#)

**Background:**

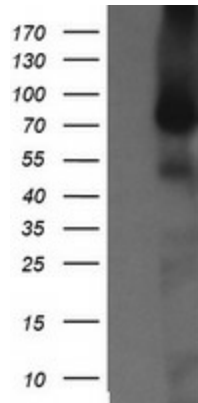
This gene encodes a member of the never in mitosis gene A family of kinases. The encoded protein localizes to the nucleoli, and may function with NEK2A in the S-phase checkpoint. The encoded protein appears to play roles in DNA replication and response to genotoxic stress. Alternatively spliced transcript variants have been described.

**Synonyms:**

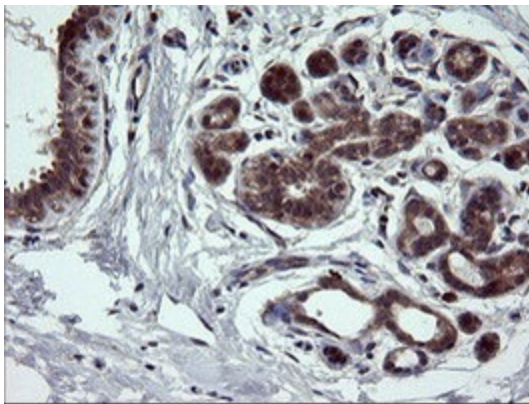
FLJ23495

**Protein Families:**

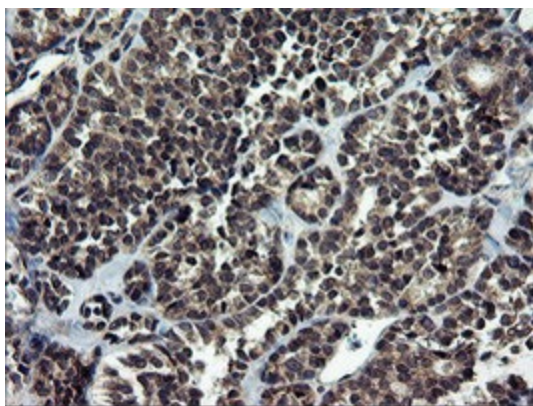
Druggable Genome, Protein Kinase

**Product images:**

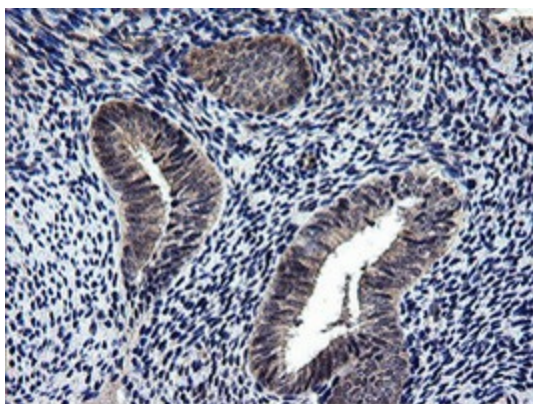
HEK293T cells were transfected with the pCMV6-ENTRY control (Cat# [PS100001], Left lane) or pCMV6-ENTRY NEK11 (Cat# [RC221953], Right lane) cDNA for 48 hrs and lysed. Equivalent amounts of cell lysates (5 ug per lane) were separated by SDS-PAGE and immunoblotted with anti-NEK11 (Cat# [TA501765]). Positive lysates [LY411057] (100ug) and [LC411057] (20ug) can be purchased separately from OriGene.



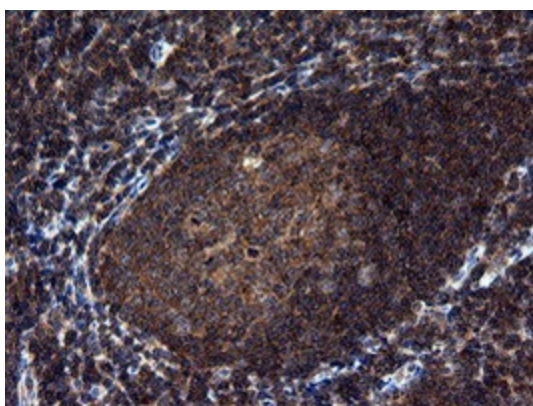
Immunohistochemical staining of paraffin-embedded Human breast tissue within the normal limits using anti-NEK11 mouse monoclonal antibody. (Heat-induced epitope retrieval by 10mM citric buffer, pH6.0, 100°C for 10min, [TA501765])



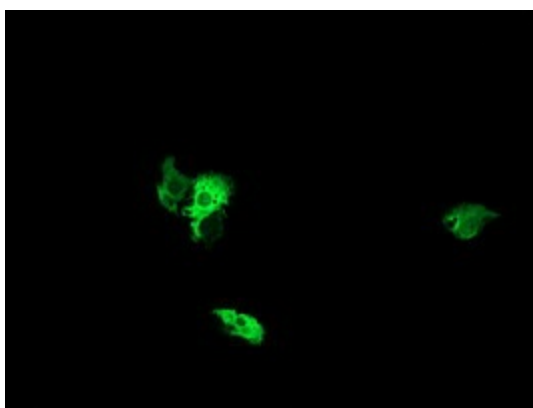
Immunohistochemical staining of paraffin-embedded Carcinoma of Human thyroid tissue using anti-NEK11 mouse monoclonal antibody. (Heat-induced epitope retrieval by 10mM citric buffer, pH6.0, 100°C for 10min, [TA501765])



Immunohistochemical staining of paraffin-embedded Human endometrium tissue within the normal limits using anti-NEK11 mouse monoclonal antibody. (Heat-induced epitope retrieval by 10mM citric buffer, pH6.0, 100°C for 10min, [TA501765])



Immunohistochemical staining of paraffin-embedded Human tonsil within the normal limits using anti-NEK11 mouse monoclonal antibody. (Heat-induced epitope retrieval by 10mM citric buffer, pH6.0, 100°C for 10min, [TA501765])



Anti-NEK11 mouse monoclonal antibody ([TA501765]) immunofluorescent staining of COS7 cells transiently transfected by pCMV6-ENTRY NEK11 ([RC221953]).