

## Product datasheet for **CF501751**

### ARHGAP25 Mouse Monoclonal Antibody [Clone ID: OTI11D3]

#### Product data:

Product Type:	Primary Antibodies
Clone Name:	OTI11D3
Applications:	FC, IF, WB
Recommended Dilution:	WB 1:500~2000, IF 1:100, FLOW 1:100
Reactivity:	Human, Dog, Mouse, Rat
Host:	Mouse
Isotype:	IgG2a
Clonality:	Monoclonal
Immunogen:	Full length human recombinant protein of human ARHGAP25 (NP_055697) produced in HEK293T cell.
Formulation:	Lyophilized powder (original buffer 1X PBS, pH 7.3, 8% trehalose)
Reconstitution Method:	For reconstitution, we recommend adding 100uL distilled water to a final antibody concentration of about 1 mg/mL. To use this carrier-free antibody for conjugation experiment, we strongly recommend performing another round of desalting process. (OriGene recommends Zeba Spin Desalting Columns, 7KMWCO from Thermo Scientific)
Purification:	Purified from mouse ascites fluids or tissue culture supernatant by affinity chromatography (protein A/G)
Conjugation:	Unconjugated
Storage:	Store at -20°C as received.
Stability:	Stable for 12 months from date of receipt.
Predicted Protein Size:	72.3 kDa
Gene Name:	Rho GTPase activating protein 25
Database Link:	<a href="#">NP_055697</a> <a href="#">Entrez Gene 232201</a> <a href="#">MouseEntrez Gene 500246</a> <a href="#">RatEntrez Gene 481407</a> <a href="#">DogEntrez Gene 9938</a> <a href="#">Human</a> <a href="#">P42331</a>

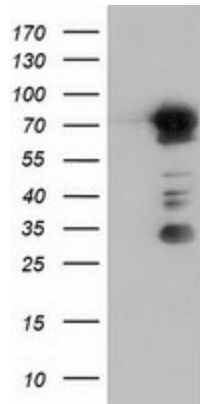


[View online »](#)

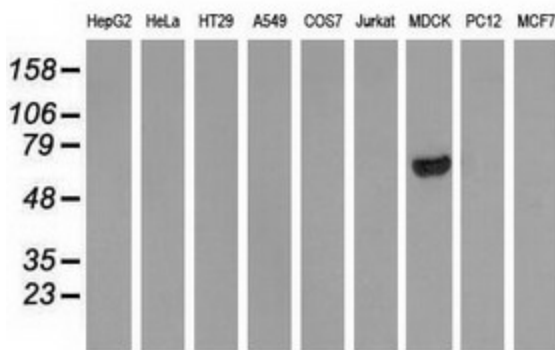
**Background:** ARHGAPs, such as ARHGAP25, encode negative regulators of Rho GTPases (see ARHA; MIM 165390), which are implicated in actin remodeling, cell polarity, and cell migration (Katoh and Katoh, 2004 [PubMed 15254788]). [supplied by OMIM]

**Synonyms:** HEL-S-308; KAIA0053

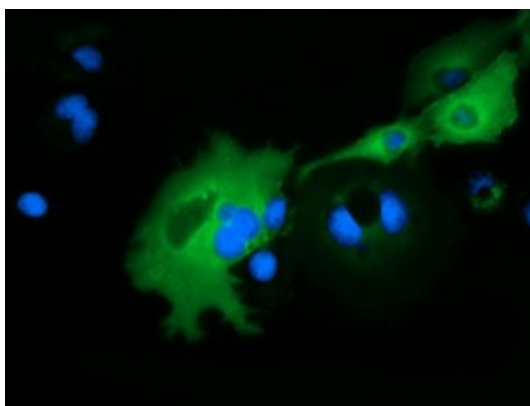
**Product images:**



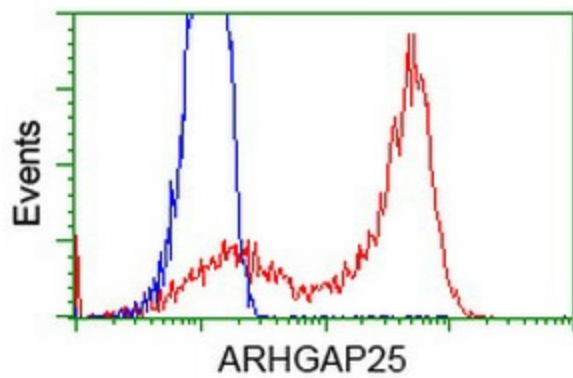
HEK293T cells were transfected with the pCMV6-ENTRY control (Left lane) or pCMV6-ENTRY ARHGAP25 ([RC217414], Right lane) cDNA for 48 hrs and lysed. Equivalent amounts of cell lysates (5 ug per lane) were separated by SDS-PAGE and immunoblotted with anti-ARHGAP25. Positive lysates [LY402385] (100ug) and [LC402385] (20ug) can be purchased separately from OriGene.



Western blot analysis of extracts (35ug) from 9 different cell lines by using anti-ARHGAP25 monoclonal antibody.



Anti-ARHGAP25 mouse monoclonal antibody ([TA501751]) immunofluorescent staining of COS7 cells transiently transfected by pCMV6-ENTRY ARHGAP25 ([RC217414]).



HEK293T cells transfected with either [RC217414] overexpress plasmid (Red) or empty vector control plasmid (Blue) were immunostained by anti-ARHGAP25 antibody ([TA501751]), and then analyzed by flow cytometry.