

Product datasheet for **CF501718**

RBBP9 Mouse Monoclonal Antibody [Clone ID: OTI4G3]

Product data:

Product Type:	Primary Antibodies
Clone Name:	OTI4G3
Applications:	FC, IF, IHC, WB
Recommended Dilution:	WB 1:2000, IHC 1:150, IF 1:100, FLOW 1:100
Reactivity:	Human, Mouse, Rat
Host:	Mouse
Isotype:	IgG2a
Clonality:	Monoclonal
Immunogen:	Full length human recombinant protein of human RBBP9 (NP_006597) produced in HEK293T cell.
Formulation:	Lyophilized powder (original buffer 1X PBS, pH 7.3, 8% trehalose)
Reconstitution Method:	For reconstitution, we recommend adding 100uL distilled water to a final antibody concentration of about 1 mg/mL. To use this carrier-free antibody for conjugation experiment, we strongly recommend performing another round of desalting process. (OriGene recommends Zeba Spin Desalting Columns, 7KMWCO from Thermo Scientific)
Purification:	Purified from mouse ascites fluids or tissue culture supernatant by affinity chromatography (protein A/G)
Conjugation:	Unconjugated
Storage:	Store at -20°C as received.
Stability:	Stable for 12 months from date of receipt.
Predicted Protein Size:	20.8 kDa
Gene Name:	RB binding protein 9, serine hydrolase
Database Link:	NP_006597 Entrez Gene 10741 Human O75884



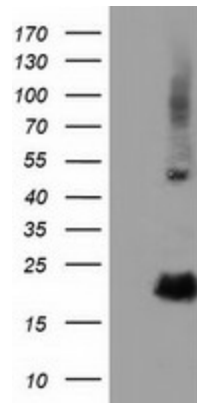
[View online »](#)

Background:

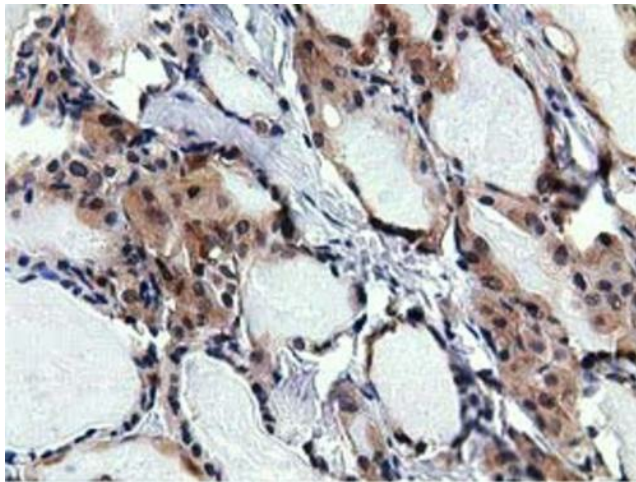
The protein encoded by this gene is a retinoblastoma binding protein that may play a role in the regulation of cell proliferation and differentiation. Two alternatively spliced transcript variants of this gene with identical predicted protein products have been reported, one of which is a nonsense-mediated decay candidate. [provided by RefSeq]. COMPLETENESS: complete on the 3' end.

Synonyms:

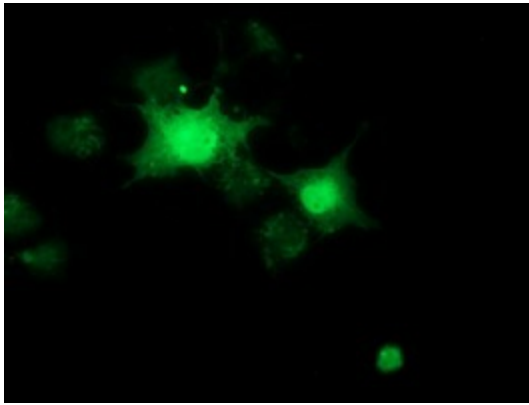
BOG; RBBP10

Product images:

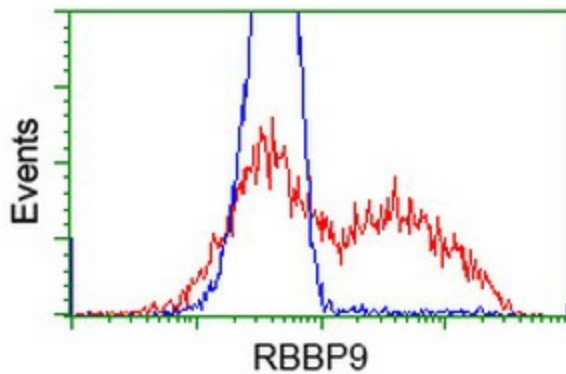
HEK293T cells were transfected with the pCMV6-ENTRY control (Left lane) or pCMV6-ENTRY RBBP9 ([RC202090], Right lane) cDNA for 48 hrs and lysed. Equivalent amounts of cell lysates (5 ug per lane) were separated by SDS-PAGE and immunoblotted with anti-RBBP9. Positive lysates [LY401976] (100ug) and [LC401976] (20ug) can be purchased separately from OriGene.



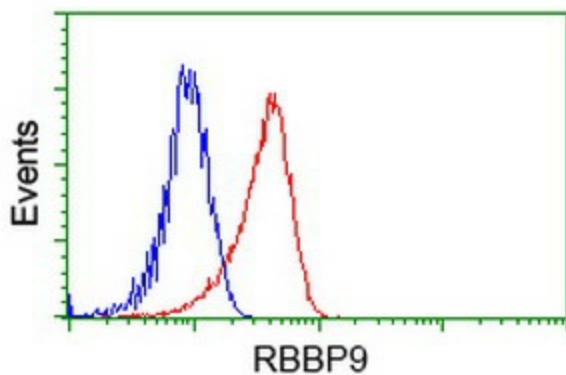
Immunohistochemical staining of paraffin-embedded Carcinoma of Human thyroid tissue using anti-RBBP9 mouse monoclonal antibody. (Heat-induced epitope retrieval by 10mM citric buffer, pH6.0, 100°C for 10min, [TA501718])



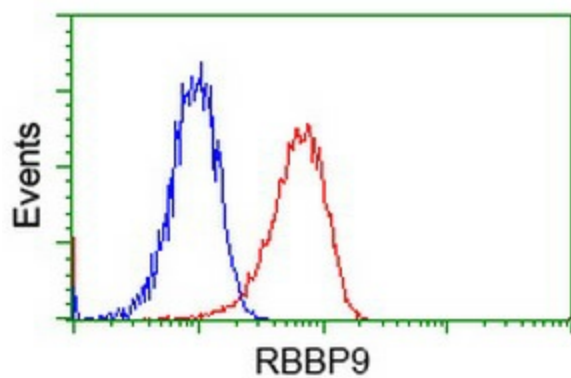
Anti-RBBP9 mouse monoclonal antibody ([TA501718]) immunofluorescent staining of COS7 cells transiently transfected by pCMV6-ENTRY RBBP9 ([RC202090]).



HEK293T cells transfected with either [RC202090] overexpress plasmid (Red) or empty vector control plasmid (Blue) were immunostained by anti-RBBP9 antibody ([TA501718]), and then analyzed by flow cytometry.



Flow cytometric Analysis of HeLa cells, using anti-RBBP9 antibody ([TA501718]), (Red), compared to a nonspecific negative control antibody (TA50011), (Blue).



Flow cytometric Analysis of Jurkat cells, using anti-RBBP9 antibody ([TA501718]), (Red), compared to a nonspecific negative control antibody (TA50011), (Blue).