

## Product datasheet for **CF501691**

### RND1 Mouse Monoclonal Antibody [Clone ID: OT11C3]

#### Product data:

Product Type:	Primary Antibodies
Clone Name:	OT11C3
Applications:	FC, IF, WB
Recommended Dilution:	WB 1:2000, IF 1:100, FLOW 1:100
Reactivity:	Human, Mouse, Rat
Host:	Mouse
Isotype:	IgG1
Clonality:	Monoclonal
Immunogen:	Full length human recombinant protein of human RND1 (NP_055285) produced in HEK293T cell.
Formulation:	Lyophilized powder (original buffer 1X PBS, pH 7.3, 8% trehalose)
Reconstitution Method:	For reconstitution, we recommend adding 100uL distilled water to a final antibody concentration of about 1 mg/mL. To use this carrier-free antibody for conjugation experiment, we strongly recommend performing another round of desalting process. (OriGene recommends Zeba Spin Desalting Columns, 7KMWCO from Thermo Scientific)
Purification:	Purified from mouse ascites fluids or tissue culture supernatant by affinity chromatography (protein A/G)
Conjugation:	Unconjugated
Storage:	Store at -20°C as received.
Stability:	Stable for 12 months from date of receipt.
Predicted Protein Size:	25.9 kDa
Gene Name:	Rho family GTPase 1
Database Link:	<a href="#">NP_055285</a> <a href="#">Entrez Gene 27289 Human Q92730</a>
Background:	Members of the Rho GTPase family, such as RND1, regulate the organization of the actin cytoskeleton in response to extracellular growth factors (Nobes et al., 1998 [PubMed 9531558]). [supplied by OMIM]



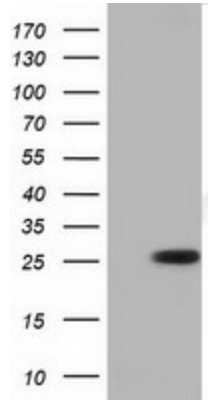
[View online »](#)

**Synonyms:** ARHS; RHO6; RHOS

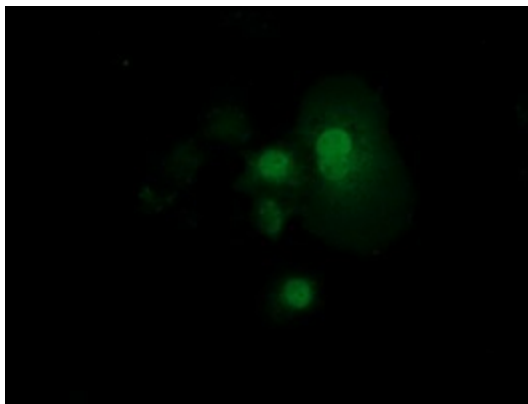
**Protein Families:** Stem cell - Pluripotency

**Protein Pathways:** Axon guidance

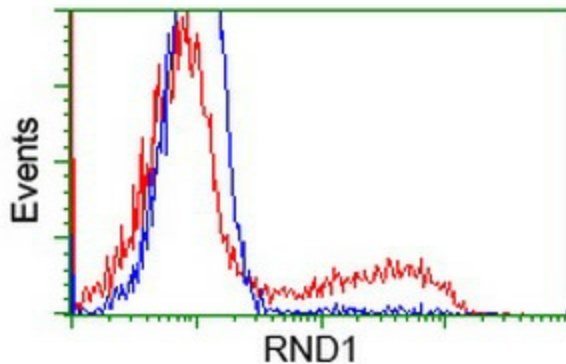
**Product images:**



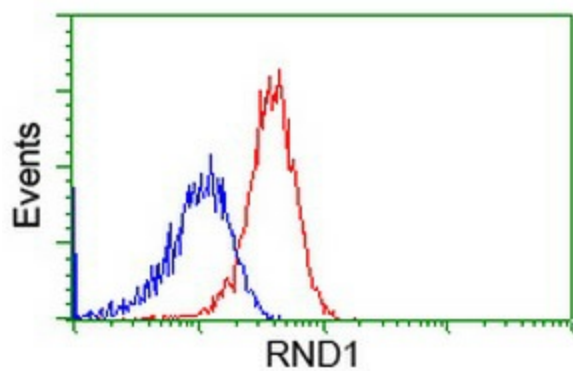
HEK293T cells were transfected with the pCMV6-ENTRY control (Cat# [PS100001], Left lane) or pCMV6-ENTRY RND1 (Cat# [RC205535], Right lane) cDNA for 48 hrs and lysed. Equivalent amounts of cell lysates (5 ug per lane) were separated by SDS-PAGE and immunoblotted with anti-RND1 (Cat# [TA501691]). Positive lysates [LY415252] (100ug) and [LC415252] (20ug) can be purchased separately from OriGene.



Anti-RND1 mouse monoclonal antibody ([TA501691]) immunofluorescent staining of COS7 cells transiently transfected by pCMV6-ENTRY RND1 ([RC205535]).



HEK293T cells transfected with either [RC205535] overexpress plasmid (Red) or empty vector control plasmid (Blue) were immunostained by anti-RND1 antibody ([TA501691]), and then analyzed by flow cytometry.



Flow cytometric Analysis of HeLa cells, using anti-RND1 antibody ([TA501691]), (Red), compared to a nonspecific negative control antibody (TA50011), (Blue).