

## Product datasheet for **CF501618**

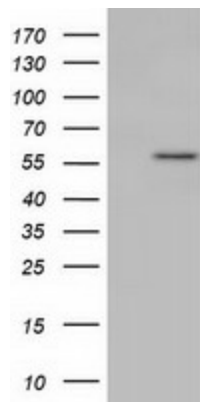
### KLHL2 Mouse Monoclonal Antibody [Clone ID: OTI10C12]

#### Product data:

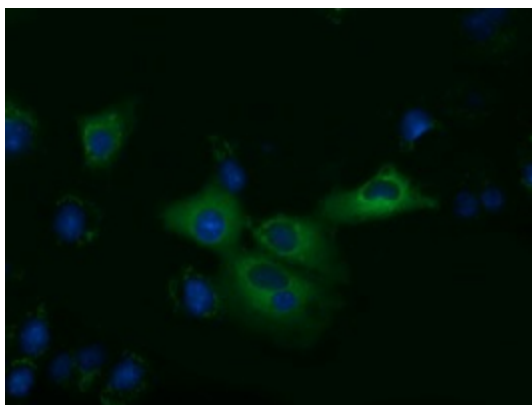
Product Type:	Primary Antibodies
Clone Name:	OTI10C12
Applications:	FC, IF, WB
Recommended Dilution:	WB 1:500, IF 1:100, FLOW 1:100
Reactivity:	Human, Mouse, Rat
Host:	Mouse
Isotype:	IgG1
Clonality:	Monoclonal
Immunogen:	Human recombinant protein fragment corresponding to amino acids 1-100 and 494-593 of human KLHL2 (NP_009177) produced in HEK293T cell.
Formulation:	Lyophilized powder (original buffer 1X PBS, pH 7.3, 8% trehalose)
Reconstitution Method:	For reconstitution, we recommend adding 100uL distilled water to a final antibody concentration of about 1 mg/mL. To use this carrier-free antibody for conjugation experiment, we strongly recommend performing another round of desalting process. (OriGene recommends Zeba Spin Desalting Columns, 7KMWCO from Thermo Scientific)
Purification:	Purified from mouse ascites fluids or tissue culture supernatant by affinity chromatography (protein A/G)
Conjugation:	Unconjugated
Storage:	Store at -20°C as received.
Stability:	Stable for 12 months from date of receipt.
Predicted Protein Size:	65.8 kDa
Gene Name:	kelch like family member 2
Database Link:	<a href="#">NP_009177</a> <a href="#">Entrez Gene 77113 Mouse</a> <a href="#">Entrez Gene 290692 Rat</a> <a href="#">Entrez Gene 11275 Human</a> <a href="#">O95198</a>
Synonyms:	ABP-KELCH; MAV; MAYVEN



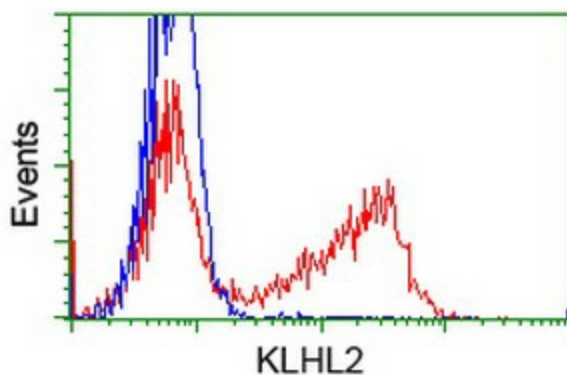
[View online »](#)

**Product images:**

HEK293T cells were transfected with the pCMV6-ENTRY control (Left lane) or pCMV6-ENTRY KLHL2 ([RC205347], Right lane) cDNA for 48 hrs and lysed. Equivalent amounts of cell lysates (5 ug per lane) were separated by SDS-PAGE and immunoblotted with anti-KLHL2. Positive lysates [LY402119] (100ug) and [LC402119] (20ug) can be purchased separately from OriGene.



Anti-KLHL2 mouse monoclonal antibody ([TA501618]) immunofluorescent staining of COS7 cells transiently transfected by pCMV6-ENTRY KLHL2 ([RC205347]).



HEK293T cells transfected with either [RC205347] overexpress plasmid (Red) or empty vector control plasmid (Blue) were immunostained by anti-KLHL2 antibody ([TA501618]), and then analyzed by flow cytometry.