

Product datasheet for **CF501608**

NEK11 Mouse Monoclonal Antibody [Clone ID: OTI5E9]

Product data:

Product Type:	Primary Antibodies
Clone Name:	OTI5E9
Applications:	FC, WB
Recommended Dilution:	WB 1:2000, FLOW 1:100
Reactivity:	Human
Host:	Mouse
Isotype:	IgG1
Clonality:	Monoclonal
Immunogen:	Full length human recombinant protein of human NEK11 (NP_079076) produced in HEK293T cell.
Formulation:	Lyophilized powder (original buffer 1X PBS, pH 7.3, 8% trehalose)
Reconstitution Method:	For reconstitution, we recommend adding 100uL distilled water to a final antibody concentration of about 1 mg/mL. To use this carrier-free antibody for conjugation experiment, we strongly recommend performing another round of desalting process. (OriGene recommends Zeba Spin Desalting Columns, 7KMWCO from Thermo Scientific)
Purification:	Purified from mouse ascites fluids or tissue culture supernatant by affinity chromatography (protein A/G)
Conjugation:	Unconjugated
Storage:	Store at -20°C as received.
Stability:	Stable for 12 months from date of receipt.
Predicted Protein Size:	74.0 kDa
Gene Name:	NIMA related kinase 11
Database Link:	NP_079076 Entrez Gene 79858 Human Q8NG66



[View online »](#)

Background:

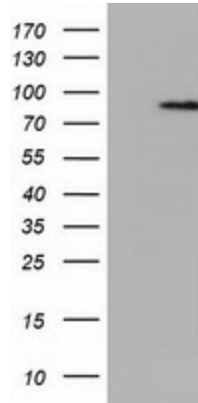
This gene encodes a member of the never in mitosis gene A family of kinases. The encoded protein localizes to the nucleoli, and may function with NEK2A in the S-phase checkpoint. The encoded protein appears to play roles in DNA replication and response to genotoxic stress. Alternatively spliced transcript variants have been described.

Synonyms:

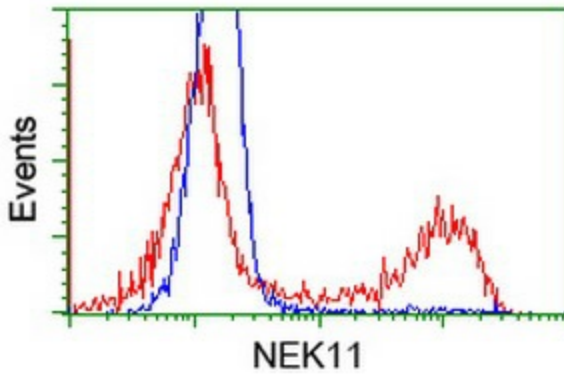
FLJ23495

Protein Families:

Druggable Genome, Protein Kinase

Product images:


HEK293T cells were transfected with the pCMV6-ENTRY control (Left lane) or pCMV6-ENTRY NEK11 ([RC221953], Right lane) cDNA for 48 hrs and lysed. Equivalent amounts of cell lysates (5 ug per lane) were separated by SDS-PAGE and immunoblotted with anti-NEK11. Positive lysates [LY411057] (100ug) and [LC411057] (20ug) can be purchased separately from OriGene.



HEK293T cells transfected with either [RC221953] overexpress plasmid (Red) or empty vector control plasmid (Blue) were immunostained by anti-NEK11 antibody ([TA501608]), and then analyzed by flow cytometry.