

Product datasheet for **CF501573**

CORO1B Mouse Monoclonal Antibody [Clone ID: OTI3D10]

Product data:

Product Type:	Primary Antibodies
Clone Name:	OTI3D10
Applications:	FC, IF, WB
Recommended Dilution:	WB 1:500~2000, IF 1:100, FLOW 1:100
Reactivity:	Human, Mouse, Rat
Host:	Mouse
Isotype:	IgG1
Clonality:	Monoclonal
Immunogen:	Full length human recombinant protein of human CORO1B (NP_065174) produced in HEK293T cell.
Formulation:	Lyophilized powder (original buffer 1X PBS, pH 7.3, 8% trehalose)
Reconstitution Method:	For reconstitution, we recommend adding 100uL distilled water to a final antibody concentration of about 1 mg/mL. To use this carrier-free antibody for conjugation experiment, we strongly recommend performing another round of desalting process. (OriGene recommends Zeba Spin Desalting Columns, 7KMWCO from Thermo Scientific)
Purification:	Purified from mouse ascites fluids or tissue culture supernatant by affinity chromatography (protein A/G)
Conjugation:	Unconjugated
Storage:	Store at -20°C as received.
Stability:	Stable for 12 months from date of receipt.
Predicted Protein Size:	54.1 kDa
Gene Name:	coronin 1B
Database Link:	NP_065174 Entrez Gene 23789 Mouse Entrez Gene 29474 Rat Entrez Gene 57175 Human Q9BR76



[View online »](#)

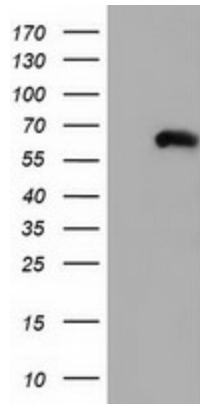
Background:

Members of the coronin family, such as CORO1B, are WD repeat-containing actin-binding proteins that regulate cell motility (Cai et al., 2005 (PubMed 16027158)).(supplied by OMIM)Regulates leading edge dynamics and cell motility in fibroblasts. May be involved in cytokinesis and signaltransduction (By similarity).

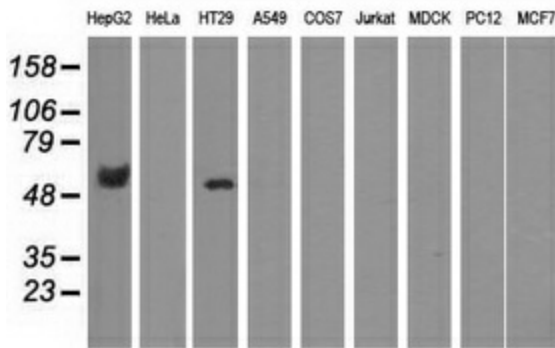
Synonyms:

CORONIN-2

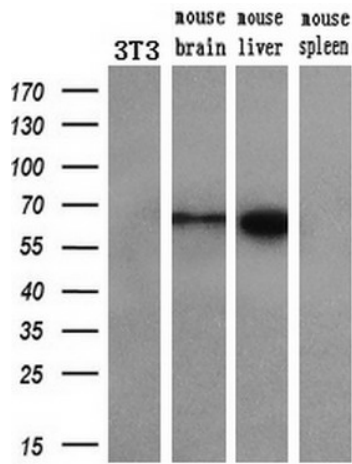
Product images:



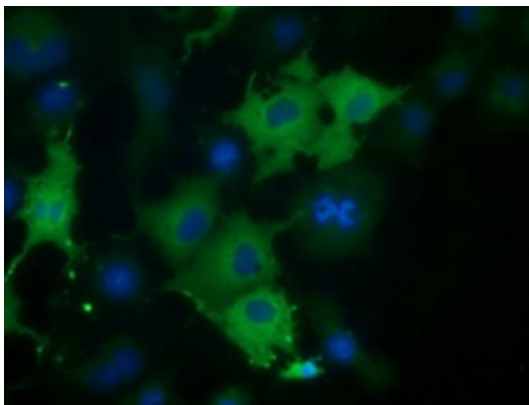
HEK293T cells were transfected with the pCMV6-ENTRY control (Cat# [PS100001], Left lane) or pCMV6-ENTRY CORO1B (Cat# [RC203023], Right lane) cDNA for 48 hrs and lysed. Equivalent amounts of cell lysates (5 ug per lane) were separated by SDS-PAGE and immunoblotted with anti-CORO1B(Cat# [TA501573]). Positive lysates [LY402787] (100ug) and [LC402787] (20ug) can be purchased separately from OriGene.



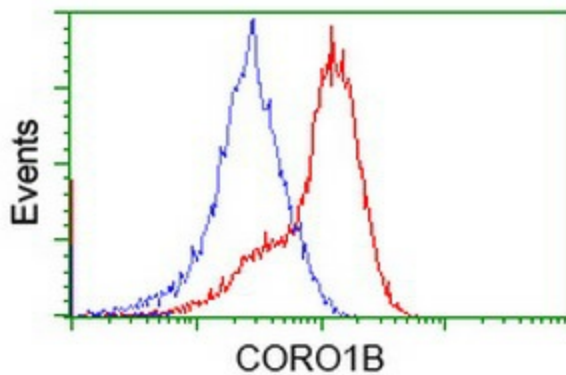
Western blot analysis of extracts (35ug) from 9 different cell lines by using anti-CORO1B monoclonal antibody.



Western blot analysis of extracts (10ug) from a mouse cell line and 3 different mouse tissues by using anti-CORO1B monoclonal antibody (1:200).



Anti-CORO1B mouse monoclonal antibody ([TA501573]) immunofluorescent staining of COS7 cells transiently transfected by pCMV6-ENTRY CORO1B ([RC203023]).



HEK293T cells transfected with either [RC203023] overexpress plasmid (Red) or empty vector control plasmid (Blue) were immunostained by anti-CORO1B antibody ([TA501573]), and then analyzed by flow cytometry.