

Product datasheet for **CF501562**

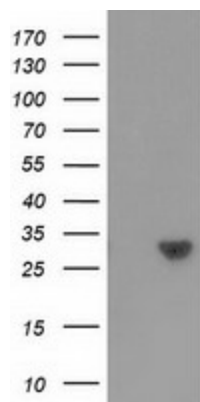
C16orf72 Mouse Monoclonal Antibody [Clone ID: OTI1A2]

Product data:

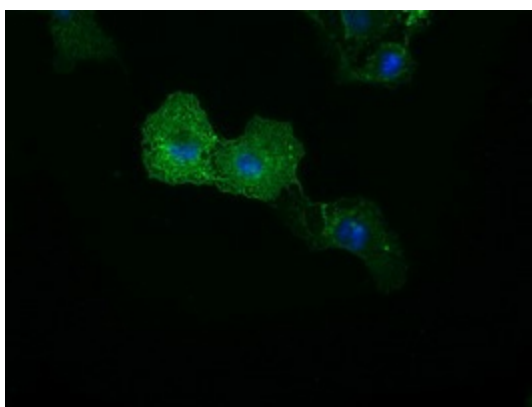
Product Type:	Primary Antibodies
Clone Name:	OTI1A2
Applications:	IF, WB
Recommended Dilution:	WB 1:2000, IF 1:100
Reactivity:	Human, Mouse, Rat
Host:	Mouse
Isotype:	IgG2a
Clonality:	Monoclonal
Immunogen:	Full length human recombinant protein of human C16orf72 (NP_054836) produced in HEK293T cell.
Formulation:	Lyophilized powder (original buffer 1X PBS, pH 7.3, 8% trehalose)
Reconstitution Method:	For reconstitution, we recommend adding 100uL distilled water to a final antibody concentration of about 1 mg/mL. To use this carrier-free antibody for conjugation experiment, we strongly recommend performing another round of desalting process. (OriGene recommends Zeba Spin Desalting Columns, 7KMWCO from Thermo Scientific)
Purification:	Purified from mouse ascites fluids or tissue culture supernatant by affinity chromatography (protein A/G)
Conjugation:	Unconjugated
Storage:	Store at -20°C as received.
Stability:	Stable for 12 months from date of receipt.
Predicted Protein Size:	30.7 kDa
Gene Name:	chromosome 16 open reading frame 72
Database Link:	NP_054836 Entrez Gene 29035 Human Q14CZ0
Synonyms:	PRO0149



[View online »](#)

Product images:

HEK293T cells were transfected with the pCMV6-ENTRY control (Left lane) or pCMV6-ENTRY C16orf72 ([RC214935], Right lane) cDNA for 48 hrs and lysed. Equivalent amounts of cell lysates (5 ug per lane) were separated by SDS-PAGE and immunoblotted with anti-C16orf72. Positive lysates [LY415486] (100ug) and [LC415486] (20ug) can be purchased separately from OriGene.



Anti-C16orf72 mouse monoclonal antibody ([TA501562]) immunofluorescent staining of COS7 cells transiently transfected by pCMV6-ENTRY C16orf72 ([RC214935]).