

Product datasheet for **CF501545**

TUBA3E Mouse Monoclonal Antibody [Clone ID: OTI2A8]

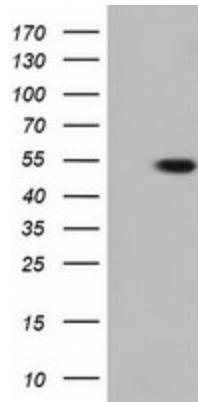
Product data:

Product Type:	Primary Antibodies
Clone Name:	OTI2A8
Applications:	FC, IF, WB
Recommended Dilution:	WB 1:2000, IF 1:100, FLOW 1:100
Reactivity:	Human, Mouse, Rat
Host:	Mouse
Isotype:	IgG2a
Clonality:	Monoclonal
Immunogen:	Full length human recombinant protein of human TUBA3E (NP_997195) produced in HEK293T cell.
Formulation:	Lyophilized powder (original buffer 1X PBS, pH 7.3, 8% trehalose)
Reconstitution Method:	For reconstitution, we recommend adding 100uL distilled water to a final antibody concentration of about 1 mg/mL. To use this carrier-free antibody for conjugation experiment, we strongly recommend performing another round of desalting process. (OriGene recommends Zeba Spin Desalting Columns, 7KMWCO from Thermo Scientific)
Purification:	Purified from mouse ascites fluids or tissue culture supernatant by affinity chromatography (protein A/G)
Conjugation:	Unconjugated
Storage:	Store at -20°C as received.
Stability:	Stable for 12 months from date of receipt.
Predicted Protein Size:	49.7 kDa
Gene Name:	tubulin alpha 3e
Database Link:	NP_997195 Entrez Gene 112714 Human Q6PEY2
Background:	Tubulin is the major constituent of microtubules. It binds two moles of GTP, one at an exchangeable site on the beta chain and one at a non-exchangeable site on the alpha-chain (By similarity).

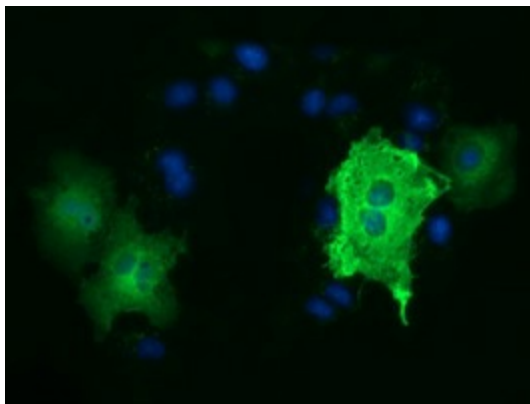


[View online »](#)

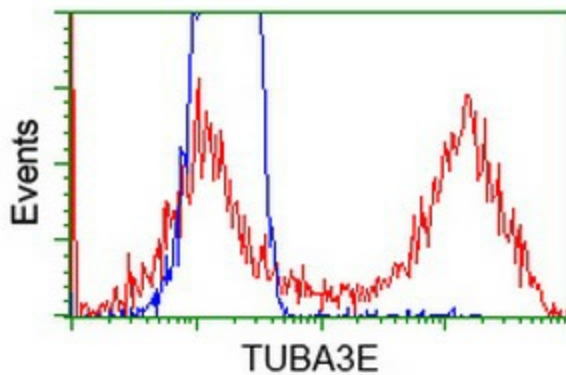
Synonyms: alpha 3e; tubulin
Protein Families: Druggable Genome
Protein Pathways: Gap junction, Pathogenic Escherichia coli infection

Product images:


HEK293T cells were transfected with the pCMV6-ENTRY control (Left lane) or pCMV6-ENTRY TUBA3E ([RC209279], Right lane) cDNA for 48 hrs and lysed. Equivalent amounts of cell lysates (5 ug per lane) were separated by SDS-PAGE and immunoblotted with anti-TUBA3E. Positive lysates [LY404091] (100ug) and [LC404091] (20ug) can be purchased separately from OriGene.



Anti-TUBA3E mouse monoclonal antibody ([TA501545]) immunofluorescent staining of COS7 cells transiently transfected by pCMV6-ENTRY TUBA3E ([RC209279]).



HEK293T cells transfected with either [RC209279] overexpress plasmid (Red) or empty vector control plasmid (Blue) were immunostained by anti-TUBA3E antibody ([TA501545]), and then analyzed by flow cytometry.