

## Product datasheet for **CF501530**

### **BTN1A1 Mouse Monoclonal Antibody [Clone ID: OTI3A12]**

#### **Product data:**

<b>Product Type:</b>	Primary Antibodies
<b>Clone Name:</b>	OTI3A12
<b>Applications:</b>	FC, IF, WB
<b>Recommended Dilution:</b>	WB 1:200, IF 1:100, Flow 1:100
<b>Reactivity:</b>	Human
<b>Host:</b>	Mouse
<b>Isotype:</b>	IgG1
<b>Clonality:</b>	Monoclonal
<b>Immunogen:</b>	Full length human recombinant protein of human BTN1A1 (NP_001723) produced in HEK293T cell.
<b>Formulation:</b>	Lyophilized powder (original buffer 1X PBS, pH 7.3, 8% trehalose)
<b>Reconstitution Method:</b>	For reconstitution, we recommend adding 100uL distilled water to a final antibody concentration of about 1 mg/mL. To use this carrier-free antibody for conjugation experiment, we strongly recommend performing another round of desalting process. (OriGene recommends Zeba Spin Desalting Columns, 7KMWCO from Thermo Scientific)
<b>Purification:</b>	Purified from mouse ascites fluids or tissue culture supernatant by affinity chromatography (protein A/G)
<b>Conjugation:</b>	Unconjugated
<b>Storage:</b>	Store at -20°C as received.
<b>Stability:</b>	Stable for 12 months from date of receipt.
<b>Predicted Protein Size:</b>	58.8 kDa
<b>Gene Name:</b>	butyrophilin subfamily 1 member A1
<b>Database Link:</b>	<a href="#">NP_001723</a> <a href="#">Entrez Gene 696 Human</a> <a href="#">Q13410</a>



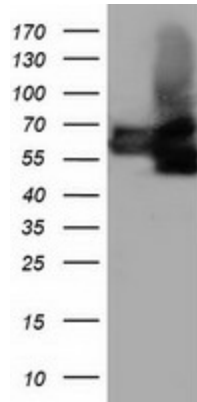
[View online »](#)

**Background:** Butyrophilin is the major protein associated with fat droplets in the milk. It is a member of the immunoglobulin superfamily. It may have a cell surface receptor function. The human butyrophilin gene is localized in the major histocompatibility complex (MHC) class I region of 6p and may have arisen relatively recently in evolution by the shuffling of exons between 2 ancestral gene families [provided by RefSeq].

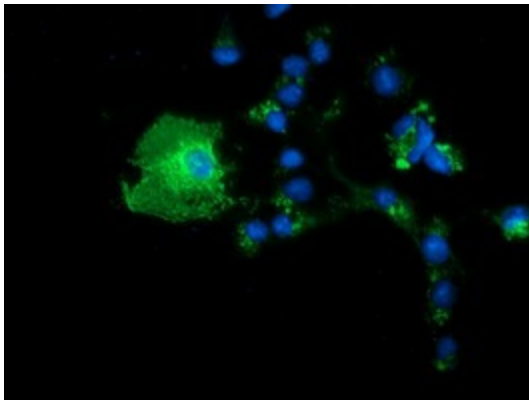
**Synonyms:** BT; BTN; BTN1

**Protein Families:** Druggable Genome, Transmembrane

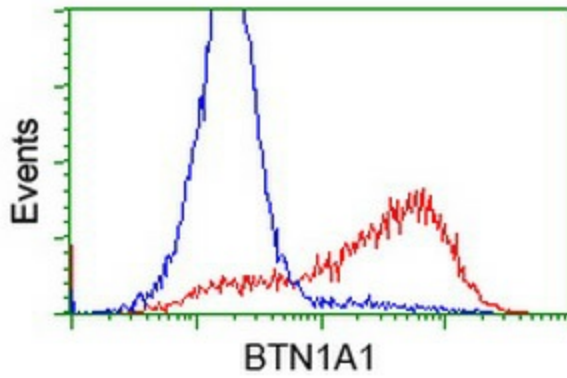
**Product images:**



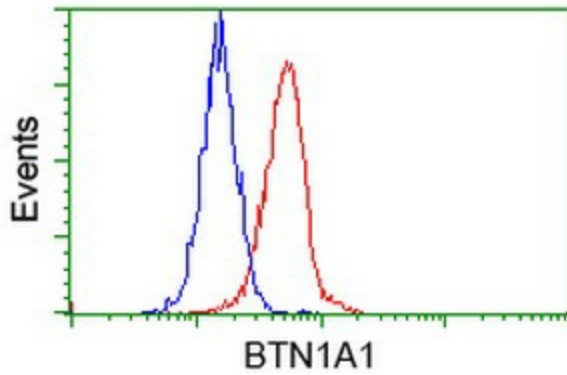
HEK293T cells were transfected with the pCMV6-ENTRY control (Left lane) or pCMV6-ENTRY BTN1A1 ([RC223852], Right lane) cDNA for 48 hrs and lysed. Equivalent amounts of cell lysates (5 ug per lane) were separated by SDS-PAGE and immunoblotted with anti-BTN1A1. Positive lysates [LY400653] (100ug) and [LC400653] (20ug) can be purchased separately from OriGene.



Anti-BTN1A1 mouse monoclonal antibody ([TA501530]) immunofluorescent staining of COS7 cells transiently transfected by pCMV6-ENTRY BTN1A1 ([RC223852]).



HEK293T cells transfected with either [RC223852] overexpress plasmid (Red) or empty vector control plasmid (Blue) were immunostained by anti-BTN1A1 antibody ([TA501530]), and then analyzed by flow cytometry.



Flow cytometric Analysis of HeLa cells, using anti-BTN1A1 antibody ([TA501530]), (Red), compared to a nonspecific negative control antibody (TA50011), (Blue).