

Product datasheet for **CF501505**

MOBKL2B (MOB3B) Mouse Monoclonal Antibody [Clone ID: OTI3A8]

Product data:

Product Type:	Primary Antibodies
Clone Name:	OTI3A8
Applications:	FC, IF, WB
Recommended Dilution:	WB 1:2000, IF 1:100, FLOW 1:100
Reactivity:	Human, Mouse, Rat
Host:	Mouse
Isotype:	IgG2a
Clonality:	Monoclonal
Immunogen:	Full length human recombinant protein of human MOBKL2B (NP_079037) produced in HEK293T cell.
Formulation:	Lyophilized powder (original buffer 1X PBS, pH 7.3, 8% trehalose)
Reconstitution Method:	For reconstitution, we recommend adding 100uL distilled water to a final antibody concentration of about 1 mg/mL. To use this carrier-free antibody for conjugation experiment, we strongly recommend performing another round of desalting process. (OriGene recommends Zeba Spin Desalting Columns, 7KMWCO from Thermo Scientific)
Purification:	Purified from mouse ascites fluids or tissue culture supernatant by affinity chromatography (protein A/G)
Conjugation:	Unconjugated
Storage:	Store at -20°C as received.
Stability:	Stable for 12 months from date of receipt.
Predicted Protein Size:	25.3 kDa
Gene Name:	MOB kinase activator 3B
Database Link:	NP_079037 Entrez Gene 214944 Mouse Entrez Gene 79817 Human Q86TA1



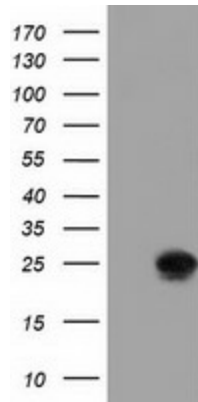
[View online »](#)

Background:

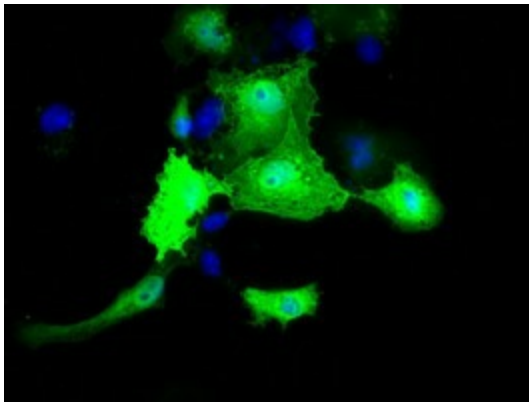
The protein encoded by this gene shares similarity with the yeast Mob1 protein. Yeast Mob1 binds Mps1p, a protein kinase essential for spindle pole body duplication and mitotic checkpoint regulation. This gene is located on the opposite strand as the interferon kappa precursor (IFNK) gene. [provided by RefSeq]. COMPLETENESS: complete on the 3' end.

Synonyms:

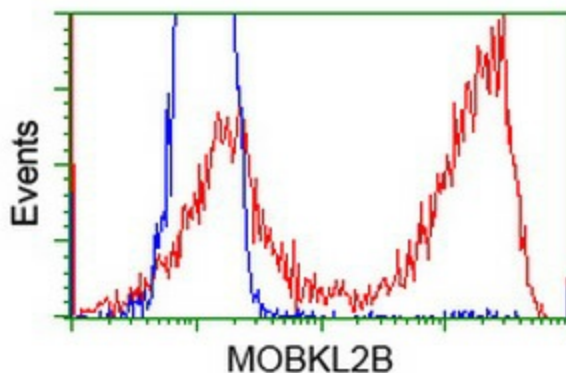
C9orf35; MOB1D; MOBKL2B

Product images:


HEK293T cells were transfected with the pCMV6-ENTRY control (Left lane) or pCMV6-ENTRY MOBKL2B ([RC205977], Right lane) cDNA for 48 hrs and lysed. Equivalent amounts of cell lysates (5 ug per lane) were separated by SDS-PAGE and immunoblotted with anti-MOBKL2B. Positive lysates [LY403025] (100ug) and [LC403025] (20ug) can be purchased separately from OriGene.



Anti-MOBKL2B mouse monoclonal antibody ([TA501505]) immunofluorescent staining of COS7 cells transiently transfected by pCMV6-ENTRY MOBKL2B ([RC205977]).



Flow cytometric analysis of HEK293T cells transfected with either [RC205977] plasmid (Red) or empty vector control plasmid (Blue) using anti-MOBKL2B antibody ([TA501505]) at 1:100 dilution.