

Product datasheet for **CF501494**

UBXD3 (UBXN10) Mouse Monoclonal Antibody [Clone ID: OTI1H5]

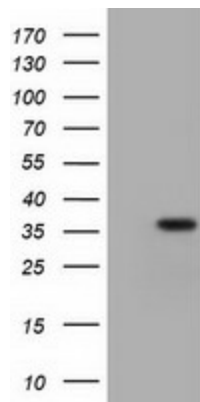
Product data:

Product Type:	Primary Antibodies
Clone Name:	OTI1H5
Applications:	FC, IF, WB
Recommended Dilution:	WB 1:500, IF 1:100, FLOW 1:100
Reactivity:	Human
Host:	Mouse
Isotype:	IgG1
Clonality:	Monoclonal
Immunogen:	Full length human recombinant protein of human UBXN10 (NP_689589) produced in HEK293T cell.
Formulation:	Lyophilized powder (original buffer 1X PBS, pH 7.3, 8% trehalose)
Reconstitution Method:	For reconstitution, we recommend adding 100uL distilled water to a final antibody concentration of about 1 mg/mL. To use this carrier-free antibody for conjugation experiment, we strongly recommend performing another round of desalting process. (OriGene recommends Zeba Spin Desalting Columns, 7KMWCO from Thermo Scientific)
Purification:	Purified from mouse ascites fluids or tissue culture supernatant by affinity chromatography (protein A/G)
Conjugation:	Unconjugated
Storage:	Store at -20°C as received.
Stability:	Stable for 12 months from date of receipt.
Predicted Protein Size:	30.6 kDa
Gene Name:	UBX domain protein 10
Database Link:	NP_689589 Entrez Gene 127733 Human Q96LJ8
Synonyms:	UBXD3

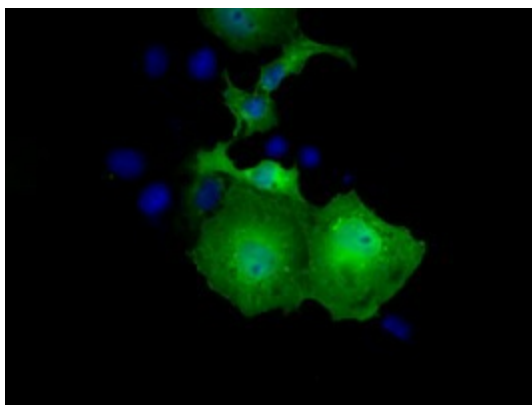


[View online »](#)

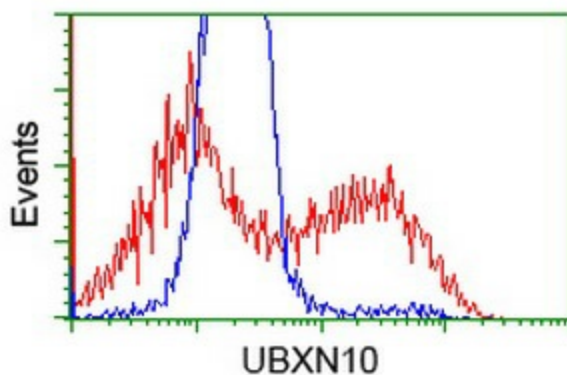
Product images:



HEK293T cells were transfected with the pCMV6-ENTRY control (Cat# [PS100001], Left lane) or pCMV6-ENTRY UBXN10 (Cat# [RC208225], Right lane) cDNA for 48 hrs and lysed. Equivalent amounts of cell lysates (5 ug per lane) were separated by SDS-PAGE and immunoblotted with anti-UBXN10 (Cat# [TA501494]). Positive lysates [LY407623] (100ug) and [LC407623] (20ug) can be purchased separately from OriGene.



Anti-UBXN10 mouse monoclonal antibody ([TA501494]) immunofluorescent staining of COS7 cells transiently transfected by pCMV6-ENTRY UBXN10 ([RC208225]).



HEK293T cells transfected with either [RC208225] overexpress plasmid (Red) or empty vector control plasmid (Blue) were immunostained by anti-UBXN10 antibody ([TA501494]), and then analyzed by flow cytometry.