

## Product datasheet for **CF501492**

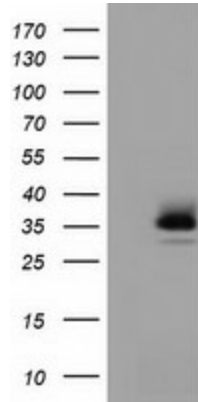
### RFPL1 Mouse Monoclonal Antibody [Clone ID: OTI1D3]

#### Product data:

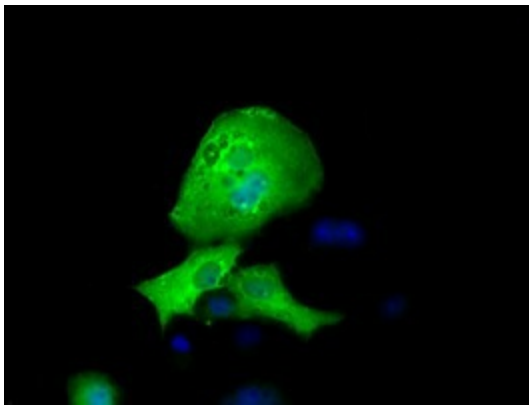
Product Type:	Primary Antibodies
Clone Name:	OTI1D3
Applications:	FC, IF, WB
Recommended Dilution:	WB 1:2000, IF 1:100, FLOW 1:100
Reactivity:	Human
Host:	Mouse
Isotype:	IgG2a
Clonality:	Monoclonal
Immunogen:	Full length human recombinant protein of human RFPL1 (NP_066306) produced in HEK293T cell.
Formulation:	Lyophilized powder (original buffer 1X PBS, pH 7.3, 8% trehalose)
Reconstitution Method:	For reconstitution, we recommend adding 100uL distilled water to a final antibody concentration of about 1 mg/mL. To use this carrier-free antibody for conjugation experiment, we strongly recommend performing another round of desalting process. (OriGene recommends Zeba Spin Desalting Columns, 7KMWCO from Thermo Scientific)
Purification:	Purified from mouse ascites fluids or tissue culture supernatant by affinity chromatography (protein A/G)
Conjugation:	Unconjugated
Storage:	Store at -20°C as received.
Stability:	Stable for 12 months from date of receipt.
Predicted Protein Size:	35.3 kDa
Gene Name:	ret finger protein like 1
Database Link:	<a href="#">NP_066306</a> <a href="#">Entrez Gene 5988 Human</a> <a href="#">O75677</a>
Synonyms:	RNF78
Protein Families:	Druggable Genome



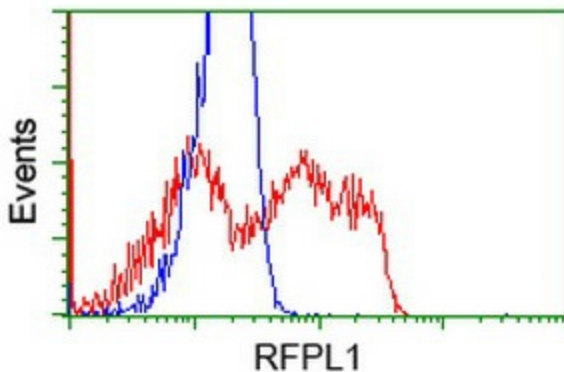
[View online »](#)

**Product images:**


HEK293T cells were transfected with the pCMV6-ENTRY control (Cat# [PS100001], Left lane) or pCMV6-ENTRY RFPL1 (Cat# [RC211141], Right lane) cDNA for 48 hrs and lysed. Equivalent amounts of cell lysates (5 ug per lane) were separated by SDS-PAGE and immunoblotted with anti-RFPL1 (Cat# [TA501492]). Positive lysates [LY412149] (100ug) and [LC412149] (20ug) can be purchased separately from OriGene.



Anti-RFPL1 mouse monoclonal antibody ([TA501492]) immunofluorescent staining of COS7 cells transiently transfected by pCMV6-ENTRY RFPL1 ([RC211141]).



HEK293T cells transfected with either [RC211141] overexpress plasmid (Red) or empty vector control plasmid (Blue) were immunostained by anti-RFPL1 antibody ([TA501492]), and then analyzed by flow cytometry.