

## Product datasheet for CF501462

### LIN7 (LIN7B) Mouse Monoclonal Antibody [Clone ID: OT11G1]

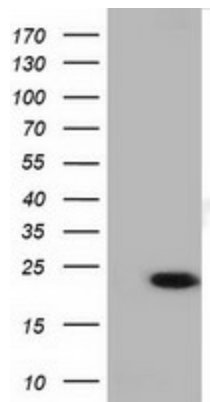
#### Product data:

Product Type:	Primary Antibodies
Clone Name:	OT11G1
Applications:	FC, IF, WB
Recommended Dilution:	WB 1:2000, IF 1:100, FLOW 1:100
Reactivity:	Human, Mouse, Rat
Host:	Mouse
Isotype:	IgG1
Clonality:	Monoclonal
Immunogen:	Full length human recombinant protein of human LIN7B (NP_071448) produced in HEK293T cell.
Formulation:	Lyophilized powder (original buffer 1X PBS, pH 7.3, 8% trehalose)
Reconstitution Method:	For reconstitution, we recommend adding 100uL distilled water to a final antibody concentration of about 1 mg/mL. To use this carrier-free antibody for conjugation experiment, we strongly recommend performing another round of desalting process. (OriGene recommends Zeba Spin Desalting Columns, 7KMWCO from Thermo Scientific)
Purification:	Purified from mouse ascites fluids or tissue culture supernatant by affinity chromatography (protein A/G)
Storage:	Store at -20°C as received.
Stability:	Stable for 12 months from date of receipt.
Predicted Protein Size:	22.7 kDa
Gene Name:	Homo sapiens lin-7 homolog B, crumbs cell polarity complex component (LIN7B), transcript variant 1, mRNA.
Database Link:	<a href="#">NP_071448 Entrez Gene 64130 Human</a>
Synonyms:	LIN-7B; MALS-2; MALS2; VELI2
Protein Families:	Druggable Genome

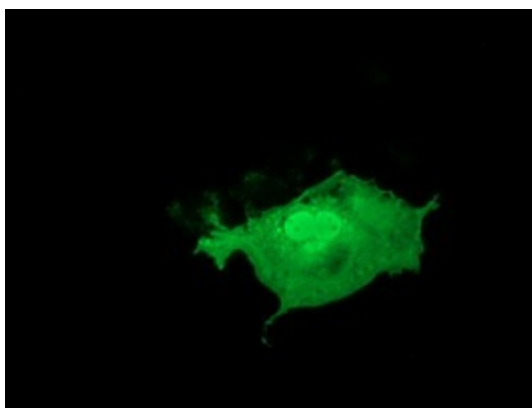


[View online »](#)

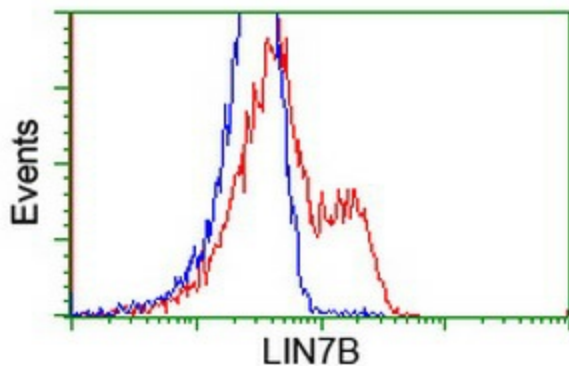
## Product images:



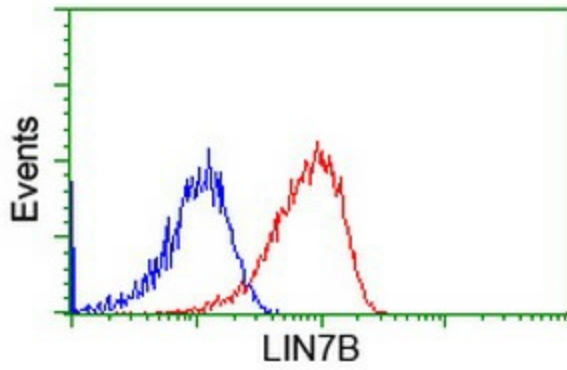
HEK293T cells were transfected with the pCMV6-ENTRY control (Left lane) or pCMV6-ENTRY LIN7B ([RC205598], Right lane) cDNA for 48 hrs and lysed. Equivalent amounts of cell lysates (5 ug per lane) were separated by SDS-PAGE and immunoblotted with anti-LIN7B. Positive lysates [LY411720] (100ug) and [LC411720] (20ug) can be purchased separately from OriGene.



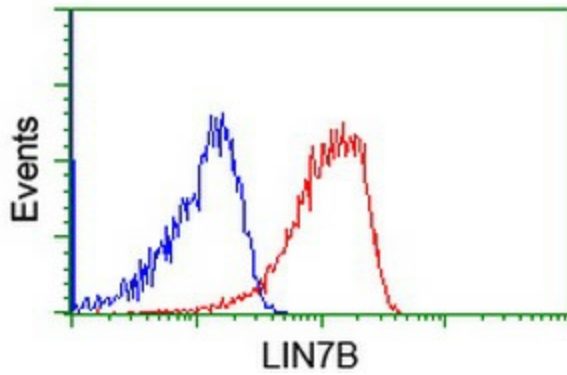
Anti-LIN7B mouse monoclonal antibody ([TA501462]) immunofluorescent staining of COS7 cells transiently transfected by pCMV6-ENTRY LIN7B ([RC205598]).



HEK293T cells transfected with either [RC205598] overexpress plasmid (Red) or empty vector control plasmid (Blue) were immunostained by anti-LIN7B antibody ([TA501462]), and then analyzed by flow cytometry.



Flow cytometric Analysis of HeLa cells, using anti-LIN7B antibody ([TA501462]), (Red), compared to a nonspecific negative control antibody ([TA50011]), (Blue).



Flow cytometric Analysis of Jurkat cells, using anti-LIN7B antibody ([TA501462]), (Red), compared to a nonspecific negative control antibody ([TA50011]), (Blue).