

## Product datasheet for **CF501409**

### Thimet Oligopeptidase (THOP1) Mouse Monoclonal Antibody [Clone ID: OTI2D3]

#### Product data:

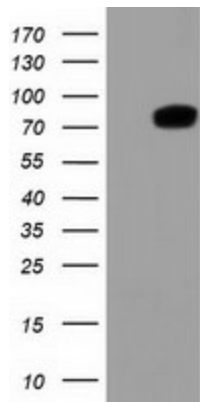
Product Type:	Primary Antibodies
Clone Name:	OTI2D3
Applications:	IHC, WB
Recommended Dilution:	WB 1:2000, IHC 1:150
Reactivity:	Human, Mouse, Rat
Host:	Mouse
Isotype:	IgG2b
Clonality:	Monoclonal
Immunogen:	Full length human recombinant protein of human THOP1 (NP_0003240) produced in HEK293T cell.
Formulation:	Lyophilized powder (original buffer 1X PBS, pH 7.3, 8% trehalose)
Reconstitution Method:	For reconstitution, we recommend adding 100uL distilled water to a final antibody concentration of about 1 mg/mL. To use this carrier-free antibody for conjugation experiment, we strongly recommend performing another round of desalting process. (OriGene recommends Zeba Spin Desalting Columns, 7KMWCO from Thermo Scientific)
Purification:	Purified from mouse ascites fluids or tissue culture supernatant by affinity chromatography (protein A/G)
Conjugation:	Unconjugated
Storage:	Store at -20°C as received.
Stability:	Stable for 12 months from date of receipt.
Predicted Protein Size:	78.7 kDa
Gene Name:	thimet oligopeptidase 1
Database Link:	<a href="#">NP_003240</a> <a href="#">Entrez Gene 7064 Human P52888</a>
Synonyms:	EP24.15; MEPD_HUMAN; MP78; TOP
Protein Families:	Druggable Genome, Protease



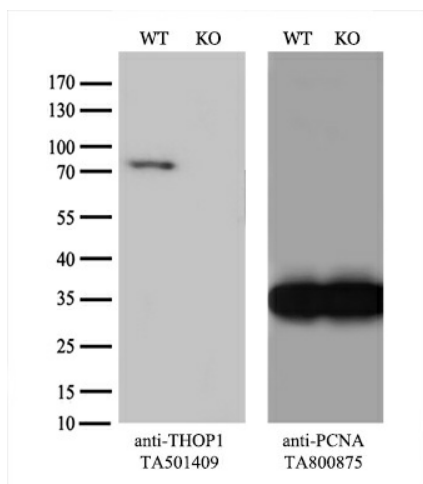
[View online »](#)

Protein Pathways: Renin-angiotensin system

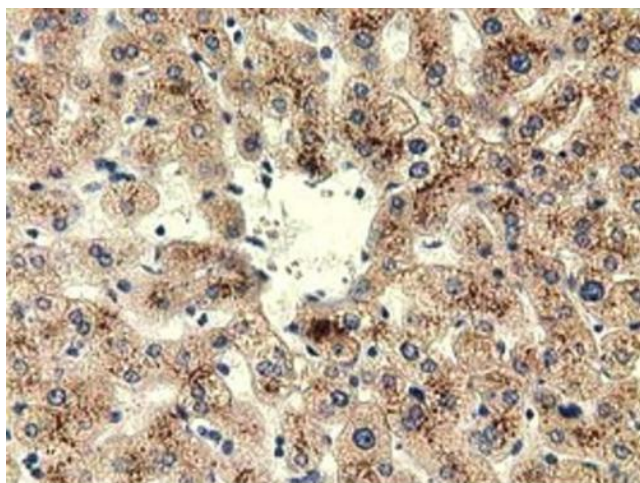
**Product images:**



HEK293T cells were transfected with the pCMV6-ENTRY control (Cat# [PS100001], Left lane) or pCMV6-ENTRY THOP1 (Cat# [RC201738], Right lane) cDNA for 48 hrs and lysed. Equivalent amounts of cell lysates (5 ug per lane) were separated by SDS-PAGE and immunoblotted with anti-THOP1 (Cat# [TA501409]). Positive lysates [LY401123] (100ug) and [LC401123] (20ug) can be purchased separately from OriGene.



Equivalent amounts of cell lysates (10 ug per lane) of wild-type HEK293T cells (WT, Cat# LC810293T) and THOP1-Knockout HEK293T cells (KO, Cat# [LC842021]) were separated by SDS-PAGE and immunoblotted with anti-THOP1 monoclonal antibody [TA501409] (1:500). Then the blotted membrane was stripped and reprobed with anti-PCNA antibody as a loading control.



Immunohistochemical staining of paraffin-embedded Human liver tissue within the normal limits using anti-THOP1 mouse monoclonal antibody. (Heat-induced epitope retrieval by 10mM citric buffer, pH6.0, 100°C for 10min, [TA501409])