

Product datasheet for CF501391

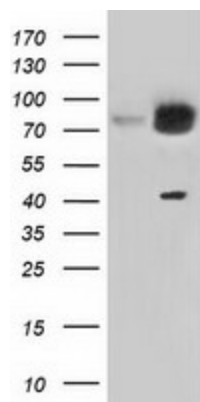
KBTBD7 Mouse Monoclonal Antibody [Clone ID: OTI1G3]

Product data:

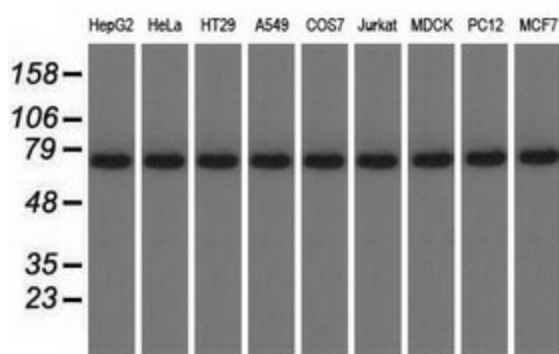
Product Type:	Primary Antibodies
Clone Name:	OTI1G3
Applications:	IF, WB
Recommended Dilution:	WB 1:2000, IF 1:100
Reactivity:	Human, Dog, Rat, Monkey, Mouse
Host:	Mouse
Isotype:	IgG2b
Clonality:	Monoclonal
Immunogen:	Full length human recombinant protein of human KBTBD7 (NP_115514) produced in HEK293T cell.
Formulation:	Lyophilized powder (original buffer 1X PBS, pH 7.3, 8% trehalose)
Reconstitution Method:	For reconstitution, we recommend adding 100uL distilled water to a final antibody concentration of about 1 mg/mL. To use this carrier-free antibody for conjugation experiment, we strongly recommend performing another round of desalting process. (OriGene recommends Zeba Spin Desalting Columns, 7KMWCO from Thermo Scientific)
Purification:	Purified from mouse ascites fluids or tissue culture supernatant by affinity chromatography (protein A/G)
Conjugation:	Unconjugated
Storage:	Store at -20°C as received.
Stability:	Stable for 12 months from date of receipt.
Predicted Protein Size:	77.0 kDa
Gene Name:	kelch repeat and BTB domain containing 7
Database Link:	NP_115514 Entrez Gene 100909827 Rat Entrez Gene 485467 Dog Entrez Gene 698337 Monkey Entrez Gene 84078 Human Q8WVZ9
Synonyms:	DKFZp434E2318


[View online »](#)

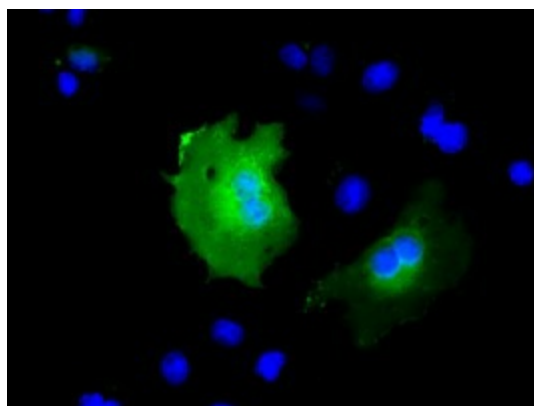
Product images:



HEK293T cells were transfected with the pCMV6-ENTRY control (Cat# [PS100001], Left lane) or pCMV6-ENTRY KBTBD7 (Cat# [RC205559], Right lane) cDNA for 48 hrs and lysed. Equivalent amounts of cell lysates (5 ug per lane) were separated by SDS-PAGE and immunoblotted with anti-KBTBD7 (Cat# [TA501391]). Positive lysates [LY410331] (100ug) and [LC410331] (20ug) can be purchased separately from OriGene.



Western blot analysis of extracts (35ug) from 9 different cell lines by using anti-KBTBD7 monoclonal antibody.



Anti-KBTBD7 mouse monoclonal antibody ([TA501391]) immunofluorescent staining of COS7 cells transiently transfected by pCMV6-ENTRY KBTBD7 ([RC205559]).