

## Product datasheet for **CF501377**

### COX6B2 Mouse Monoclonal Antibody [Clone ID: OT11F5]

#### Product data:

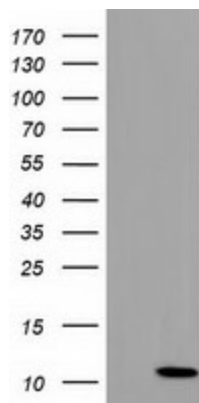
Product Type:	Primary Antibodies
Clone Name:	OT11F5
Applications:	IF, WB
Recommended Dilution:	WB 1:500, IF 1:100
Reactivity:	Human
Host:	Mouse
Isotype:	IgG1
Clonality:	Monoclonal
Immunogen:	Full length human recombinant protein of human COX6B2 (NP_653214) produced in HEK293T cell.
Formulation:	Lyophilized powder (original buffer 1X PBS, pH 7.3, 8% trehalose)
Reconstitution Method:	For reconstitution, we recommend adding 100uL distilled water to a final antibody concentration of about 1 mg/mL. To use this carrier-free antibody for conjugation experiment, we strongly recommend performing another round of desalting process. (OriGene recommends Zeba Spin Desalting Columns, 7KMWCO from Thermo Scientific)
Purification:	Purified from mouse ascites fluids or tissue culture supernatant by affinity chromatography (protein A/G)
Conjugation:	Unconjugated
Storage:	Store at -20°C as received.
Stability:	Stable for 12 months from date of receipt.
Predicted Protein Size:	10.3 kDa
Gene Name:	cytochrome c oxidase subunit 6B2
Database Link:	<a href="#">NP_653214</a> <a href="#">Entrez Gene 125965 Human</a> <a href="#">Q6YFQ2</a>
Synonyms:	COXVIB2; CT59



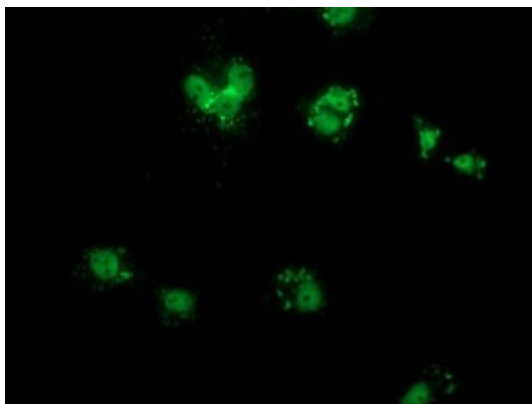
[View online »](#)

**Protein Pathways:** Alzheimer's disease, Cardiac muscle contraction, Huntington's disease, Metabolic pathways, Oxidative phosphorylation, Parkinson's disease

**Product images:**



HEK293T cells were transfected with the pCMV6-ENTRY control (Cat# [PS100001], Left lane) or pCMV6-ENTRY COX6B2 (Cat# [RC206224], Right lane) cDNA for 48 hrs and lysed. Equivalent amounts of cell lysates (5 ug per lane) were separated by SDS-PAGE and immunoblotted with anti-COX6B2 (Cat# [TA501377]). Positive lysates [LY408248] (100ug) and [LC408248] (20ug) can be purchased separately from OriGene.



Anti-COX6B2 mouse monoclonal antibody ([TA501377]) immunofluorescent staining of COS7 cells transiently transfected by pCMV6-ENTRY COX6B2 ([RC206224]).