

Product datasheet for **CF501371**

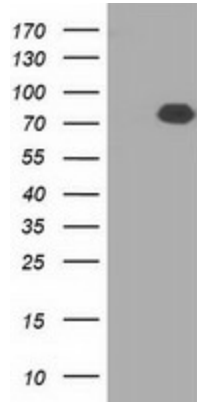
HID1 Mouse Monoclonal Antibody [Clone ID: OTI2G6]

Product data:

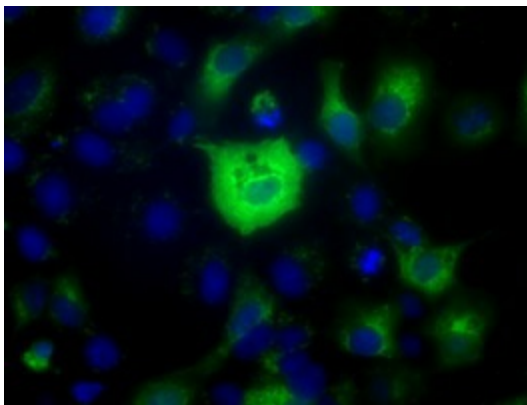
Product Type:	Primary Antibodies
Clone Name:	OTI2G6
Applications:	FC, IF, WB
Recommended Dilution:	WB 1:2000, IF 1:100, FLOW 1:100
Reactivity:	Human, Mouse, Rat
Host:	Mouse
Isotype:	IgG1
Clonality:	Monoclonal
Immunogen:	Full length human recombinant protein of human C17orf28 (NP_085133) produced in HEK293T cell.
Formulation:	Lyophilized powder (original buffer 1X PBS, pH 7.3, 8% trehalose)
Reconstitution Method:	For reconstitution, we recommend adding 100uL distilled water to a final antibody concentration of about 1 mg/mL. To use this carrier-free antibody for conjugation experiment, we strongly recommend performing another round of desalting process. (OriGene recommends Zeba Spin Desalting Columns, 7KMWCO from Thermo Scientific)
Purification:	Purified from mouse ascites fluids or tissue culture supernatant by affinity chromatography (protein A/G)
Conjugation:	Unconjugated
Storage:	Store at -20°C as received.
Stability:	Stable for 12 months from date of receipt.
Predicted Protein Size:	88.6 kDa
Gene Name:	HID1 domain containing
Database Link:	NP_085133 Entrez Gene 287822 Rat Entrez Gene 283987 Human Q8IV36
Synonyms:	C17orf28; DMC1; HID-1



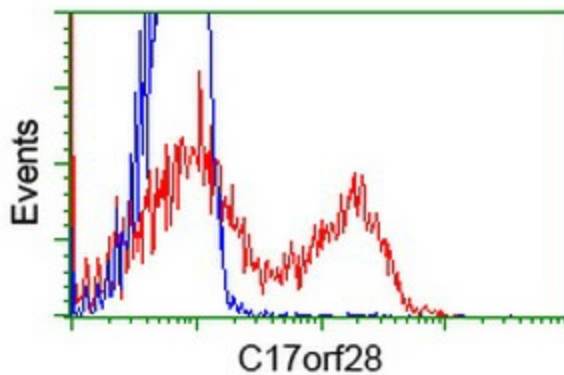
[View online »](#)

Product images:


HEK293T cells were transfected with the pCMV6-ENTRY control (Left lane) or pCMV6-ENTRY C17orf28 ([RC206740], Right lane) cDNA for 48 hrs and lysed. Equivalent amounts of cell lysates (5 ug per lane) were separated by SDS-PAGE and immunoblotted with anti-C17orf28. Positive lysates [LY403066] (100ug) and [LC403066] (20ug) can be purchased separately from OriGene.



Anti-C17orf28 mouse monoclonal antibody ([TA501371]) immunofluorescent staining of COS7 cells transiently transfected by pCMV6-ENTRY C17orf28 ([RC206740]).



HEK293T cells transfected with either [RC206740] overexpress plasmid (Red) or empty vector control plasmid (Blue) were immunostained by anti-C17orf28 antibody ([TA501371]), and then analyzed by flow cytometry.