

Product datasheet for **CF501367**

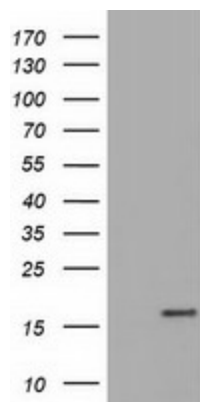
TTC32 Mouse Monoclonal Antibody [Clone ID: OTI5B6]

Product data:

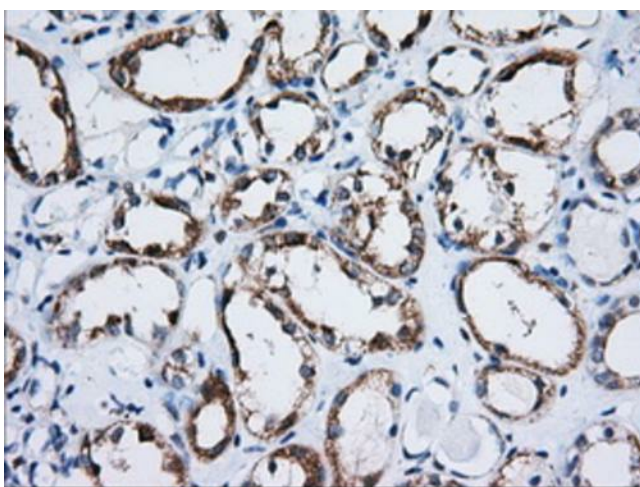
Product Type:	Primary Antibodies
Clone Name:	OTI5B6
Applications:	FC, IF, IHC, WB
Recommended Dilution:	WB 1:2000, IHC 1:50, IF 1:100, FLOW 1:100
Reactivity:	Human
Host:	Mouse
Isotype:	IgG1
Clonality:	Monoclonal
Immunogen:	Full length human recombinant protein of human TTC32 (NP_001008238) produced in HEK293T cell.
Formulation:	Lyophilized powder (original buffer 1X PBS, pH 7.3, 8% trehalose)
Reconstitution Method:	For reconstitution, we recommend adding 100uL distilled water to a final antibody concentration of about 1 mg/mL. To use this carrier-free antibody for conjugation experiment, we strongly recommend performing another round of desalting process. (OriGene recommends Zeba Spin Desalting Columns, 7KMWCO from Thermo Scientific)
Purification:	Purified from mouse ascites fluids or tissue culture supernatant by affinity chromatography (protein A/G)
Conjugation:	Unconjugated
Storage:	Store at -20°C as received.
Stability:	Stable for 12 months from date of receipt.
Predicted Protein Size:	17.1 kDa
Gene Name:	tetratricopeptide repeat domain 32
Database Link:	NP_001008238 Entrez Gene 130502 Human Q5I0X7
Synonyms:	tetratricopeptide repeat domain 32



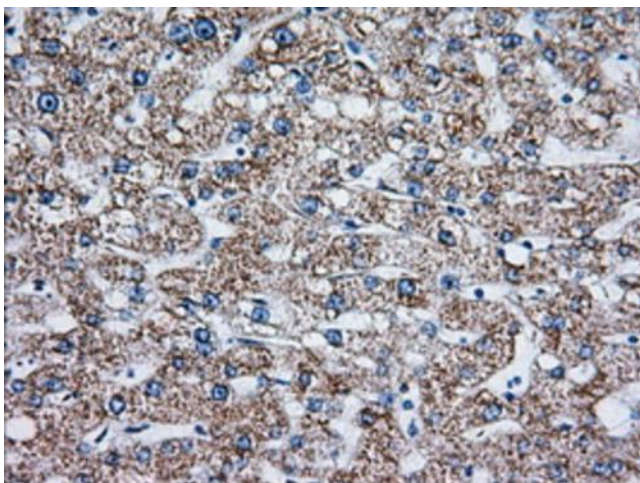
[View online »](#)

Product images:

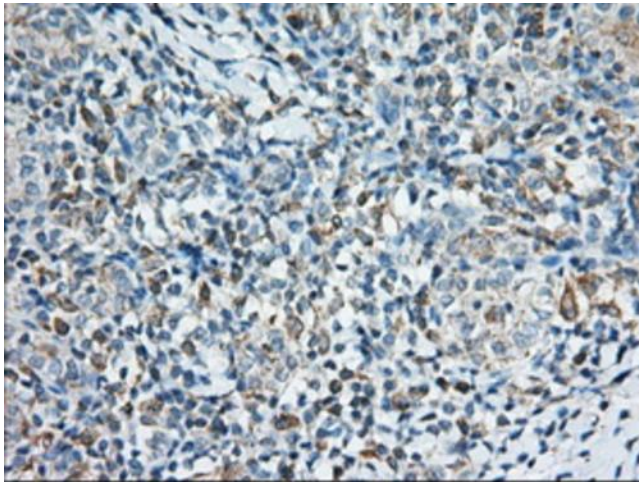
HEK293T cells were transfected with the pCMV6-ENTRY control (Left lane) or pCMV6-ENTRY TTC32 ([RC209334], Right lane) cDNA for 48 hrs and lysed. Equivalent amounts of cell lysates (5 ug per lane) were separated by SDS-PAGE and immunoblotted with anti-TTC32. Positive lysates [LY423407] (100ug) and [LC423407] (20ug) can be purchased separately from OriGene.



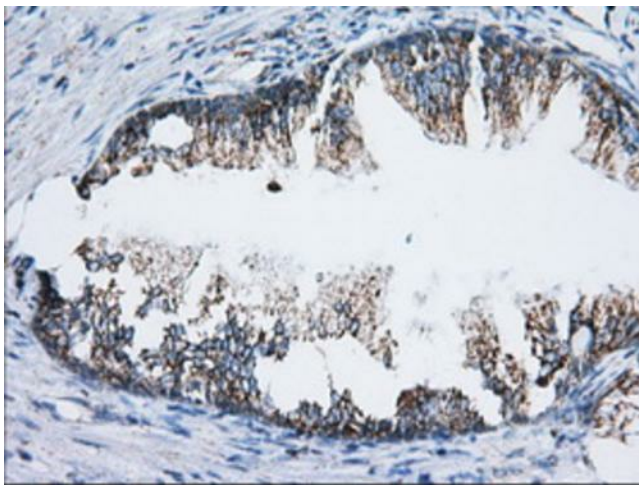
Immunohistochemical staining of paraffin-embedded Human Kidney tissue within the normal limits using anti-TTC32 mouse monoclonal antibody. (Heat-induced epitope retrieval by 10mM citric buffer, pH6.0, 100°C for 10min, [TA501367], Dilution 1:50)



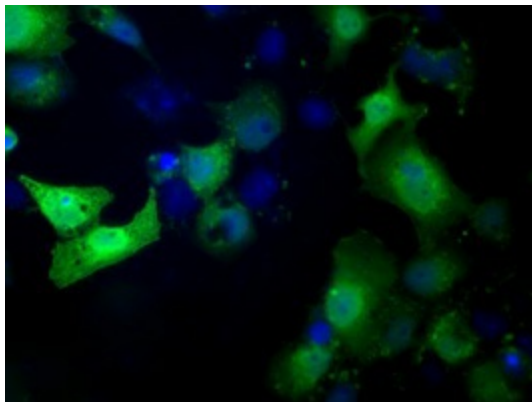
Immunohistochemical staining of paraffin-embedded Human liver tissue within the normal limits using anti-TTC32 mouse monoclonal antibody. (Heat-induced epitope retrieval by 10mM citric buffer, pH6.0, 100°C for 10min, [TA501367], Dilution 1:50)



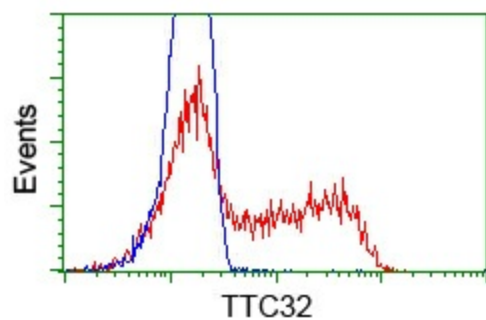
Immunohistochemical staining of paraffin-embedded Carcinoma of Human thyroid tissue using anti-TTC32 mouse monoclonal antibody. (Heat-induced epitope retrieval by 10mM citric buffer, pH6.0, 100°C for 10min, [TA501367], Dilution 1:50)



Immunohistochemical staining of paraffin-embedded Human prostate tissue within the normal limits using anti-TTC32 mouse monoclonal antibody. (Heat-induced epitope retrieval by 10mM citric buffer, pH6.0, 100°C for 10min, [TA501367], Dilution 1:50)



Anti-TTC32 mouse monoclonal antibody ([TA501367]) immunofluorescent staining of COS7 cells transiently transfected by pCMV6-ENTRY TTC32 ([RC209334]).



HEK293T cells transfected with either [RC209334] overexpress plasmid (Red) or empty vector control plasmid (Blue) were immunostained by anti-TTC32 antibody ([TA501367]), and then analyzed by flow cytometry.