

Product datasheet for **CF501350**

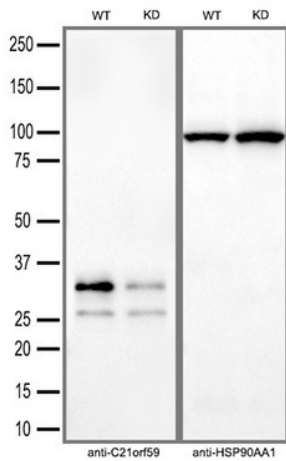
CFAP298 Mouse Monoclonal Antibody [Clone ID: OTI2H5]

Product data:

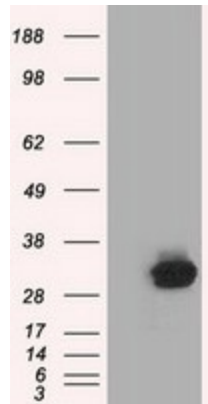
Product Type:	Primary Antibodies
Clone Name:	OTI2H5
Applications:	FC, IF, WB
Recommended Dilution:	WB: 1:200 - 1:1000, IF 1:100, FLOW 1:100
Reactivity:	Human
Host:	Mouse
Isotype:	IgG1
Clonality:	Monoclonal
Immunogen:	Full length human recombinant protein of human C21orf59 (NP_067077) produced in HEK293T cell.
Formulation:	Lyophilized powder (original buffer 1X PBS, pH 7.3, 8% trehalose)
Reconstitution Method:	For reconstitution, we recommend adding 100uL distilled water to a final antibody concentration of about 1 mg/mL. To use this carrier-free antibody for conjugation experiment, we strongly recommend performing another round of desalting process. (OriGene recommends Zeba Spin Desalting Columns, 7KMWCO from Thermo Scientific)
Purification:	Purified from mouse ascites fluids or tissue culture supernatant by affinity chromatography (protein A/G)
Conjugation:	Unconjugated
Storage:	Store at -20°C as received.
Stability:	Stable for 12 months from date of receipt.
Predicted Protein Size:	33.0 kDa
Gene Name:	cilia and flagella associated protein 298
Database Link:	NP_067077 Entrez Gene 56683 Human P57076
Synonyms:	C21orf48; CILD26; FBB18



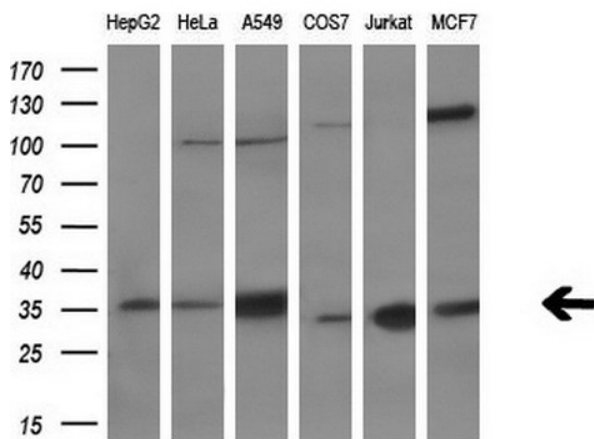
[View online »](#)

Product images:


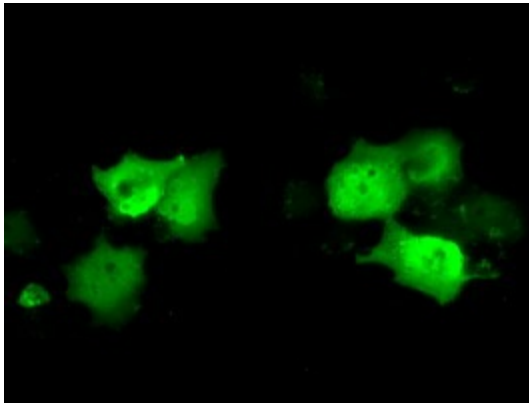
Equivalent amounts of cell lysates (30 ug per lane) of wild-type HT-1080 cells (WT) and C21orf59-Knockdown HT-1080 cells (KD) were separated by SDS-PAGE and immunoblotted with anti-C21orf59 monoclonal antibody [TA501350] (1:2500). Then the blotted membrane was stripped and reprobed with anti-HSP90AA1 antibody as a loading control.



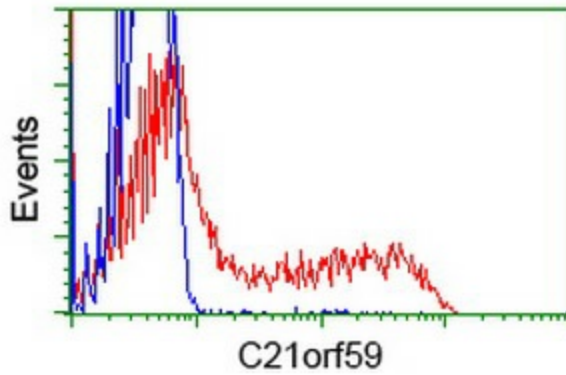
HEK293T cells were transfected with the pCMV6-ENTRY control (Cat# [PS100001], Left lane) or pCMV6-ENTRY C21orf59 (Cat# [RC200169], Right lane) cDNA for 48 hrs and lysed. Equivalent amounts of cell lysates (5 ug per lane) were separated by SDS-PAGE and immunoblotted with anti-C21orf59 (Cat# [TA501350]). Positive lysates [LY402864] (100ug) and [LC402864] (20ug) can be purchased separately from OriGene.



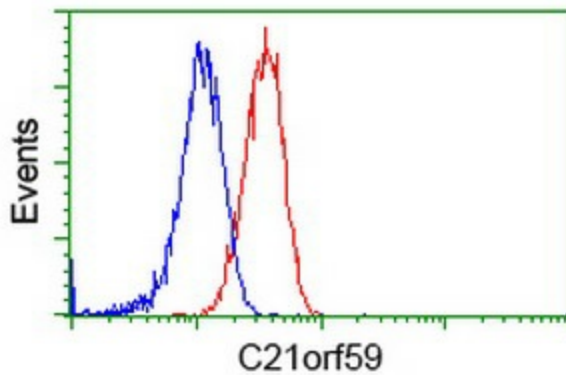
Western blot analysis of extracts (10ug) from 6 different cell lines by using anti-C21orf59 monoclonal antibody (1:200).



Anti-C21orf59 mouse monoclonal antibody ([TA501350]) immunofluorescent staining of COS7 cells transiently transfected by pCMV6-ENTRY C21orf59 ([RC200169]).



HEK293T cells transfected with either [RC200169] overexpress plasmid (Red) or empty vector control plasmid (Blue) were immunostained by anti-C21orf59 antibody ([TA501350]), and then analyzed by flow cytometry.



Flow cytometric Analysis of Jurkat cells, using anti-C21orf59 antibody ([TA501350]), (Red), compared to a nonspecific negative control antibody (TA50011), (Blue).