

Product datasheet for **CF501318**

HIBCH Mouse Monoclonal Antibody [Clone ID: OTI2A5]

Product data:

Product Type:	Primary Antibodies
Clone Name:	OTI2A5
Applications:	FC, IF, WB
Recommended Dilution:	WB 1:2000, IF 1:100, FLOW 1:100
Reactivity:	Human
Host:	Mouse
Isotype:	IgG1
Clonality:	Monoclonal
Immunogen:	Full length human recombinant protein of human HIBCH (NP_055177) produced in HEK293T cell.
Formulation:	Lyophilized powder (original buffer 1X PBS, pH 7.3, 8% trehalose)
Reconstitution Method:	For reconstitution, we recommend adding 100uL distilled water to a final antibody concentration of about 1 mg/mL. To use this carrier-free antibody for conjugation experiment, we strongly recommend performing another round of desalting process. (OriGene recommends Zeba Spin Desalting Columns, 7KMWCO from Thermo Scientific)
Purification:	Purified from mouse ascites fluids or tissue culture supernatant by affinity chromatography (protein A/G)
Conjugation:	Unconjugated
Storage:	Store at -20°C as received.
Stability:	Stable for 12 months from date of receipt.
Predicted Protein Size:	39.4 kDa
Gene Name:	3-hydroxyisobutyryl-CoA hydrolase
Database Link:	NP_055177 Entrez Gene 26275 Human Q6NVY1
Background:	This gene encodes the enzyme responsible for hydrolysis of both HIBYL-CoA and beta-hydroxypropionyl-CoA. Mutations in this gene have been associated with 3-hydroxyisobutyryl-CoA hydrolase deficiency. Alternative splicing results in multiple transcript variants.

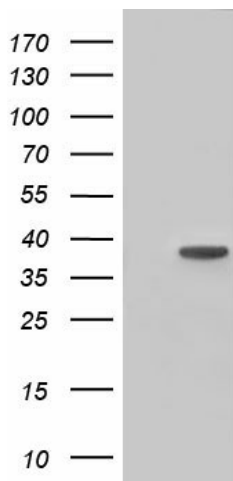


[View online »](#)

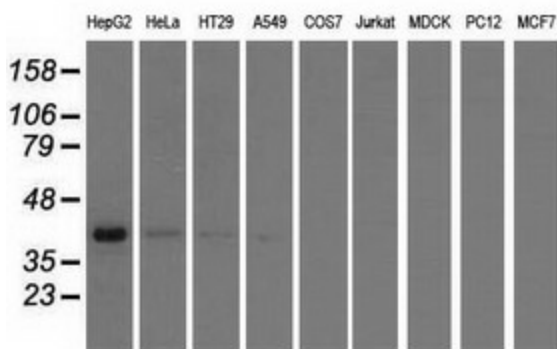
Synonyms: HIBYLCOAH

Protein Pathways: beta-Alanine metabolism, Metabolic pathways, Propanoate metabolism, Valine, leucine and isoleucine degradation

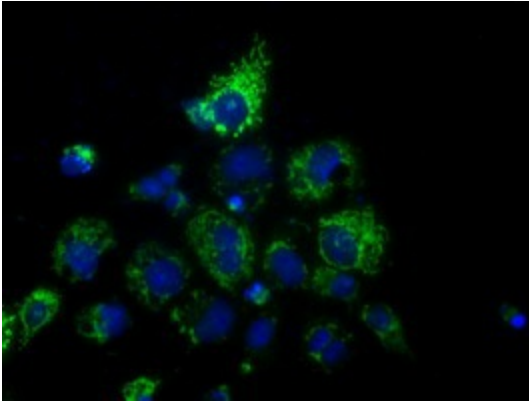
Product images:



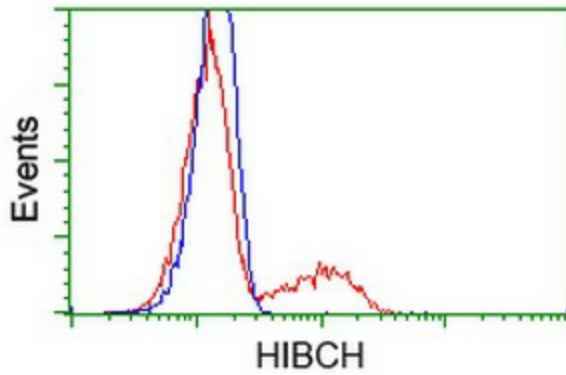
HEK293T cells were transfected with the pCMV6-ENTRY control (Left lane) or pCMV6-ENTRY HIBCH ([RC209814], Right lane) cDNA for 48 hrs and lysed. Equivalent amounts of cell lysates (5 ug per lane) were separated by SDS-PAGE and immunoblotted with anti-HIBCH. Positive lysates [LY402324] (100ug) and [LC402324] (20ug) can be purchased separately from OriGene.



Western blot analysis of extracts (35ug) from 9 different cell lines by using anti-HIBCH monoclonal antibody.



Anti-HIBCH mouse monoclonal antibody ([TA501318]) immunofluorescent staining of COS7 cells transiently transfected by pCMV6-ENTRY HIBCH ([RC209814]).



HEK293T cells transfected with either [RC209814] overexpress plasmid (Red) or empty vector control plasmid (Blue) were immunostained by anti-HIBCH antibody ([TA501318]), and then analyzed by flow cytometry.