

## Product datasheet for **CF501306**

### MPP3 Mouse Monoclonal Antibody [Clone ID: OTI8B11]

#### Product data:

|                         |  |
|-------------------------|--|
| Product Type:           | Primary Antibodies   |
| Clone Name:             | OTI8B11  |
| Applications:           | IF, IHC, WB  |
| Recommended Dilution:   | WB 1:2000, IF 1:100, IHC 1:150   |
| Reactivity:             | Human, Mouse, Rat  |
| Host:                   | Mouse  |
| Isotype:                | IgG1   |
| Clonality:              | Monoclonal   |
| Immunogen:              | Full length human recombinant protein of human MPP3 (NP_001923) produced in HEK293T cell.  |
| Formulation:            | Lyophilized powder (original buffer 1X PBS, pH 7.3, 8% trehalose)  |
| Reconstitution Method:  | For reconstitution, we recommend adding 100uL distilled water to a final antibody concentration of about 1 mg/mL. To use this carrier-free antibody for conjugation experiment, we strongly recommend performing another round of desalting process. (OriGene recommends Zeba Spin Desalting Columns, 7KMWCO from Thermo Scientific) |
| Purification:           | Purified from mouse ascites fluids or tissue culture supernatant by affinity chromatography (protein A/G)  |
| Conjugation:            | Unconjugated   |
| Storage:                | Store at -20°C as received.  |
| Stability:              | Stable for 12 months from date of receipt.   |
| Predicted Protein Size: | 66.0 kDa   |
| Gene Name:              | membrane palmitoylated protein 3   |
| Database Link:          | <a href="#">NP_001923</a><br><a href="#">Entrez Gene 13384 Mouse</a> <a href="#">Entrez Gene 114202 Rat</a> <a href="#">Entrez Gene 4356 Human</a><br><a href="#">Q13368</a>   |



[View online »](#)

**Background:**

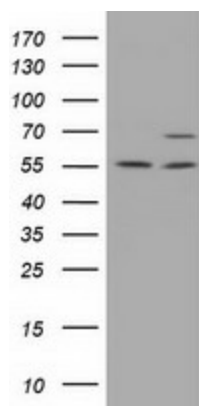
This gene product is a member of a family of membrane-associated proteins termed MAGUKs (membrane-associated guanylate kinase homologs). MAGUKs interact with the cytoskeleton and regulate cell proliferation, signaling pathways, and intracellular junctions. This protein contains a conserved sequence, called the SH3 (src homology 3) motif, found in several other proteins that associate with the cytoskeleton and are suspected to play important roles in signal transduction. Alternatively spliced transcript variants have been identified. One transcript variant is experimentally supported, but it doesn't encode a protein. [provided by RefSeq]

**Synonyms:**

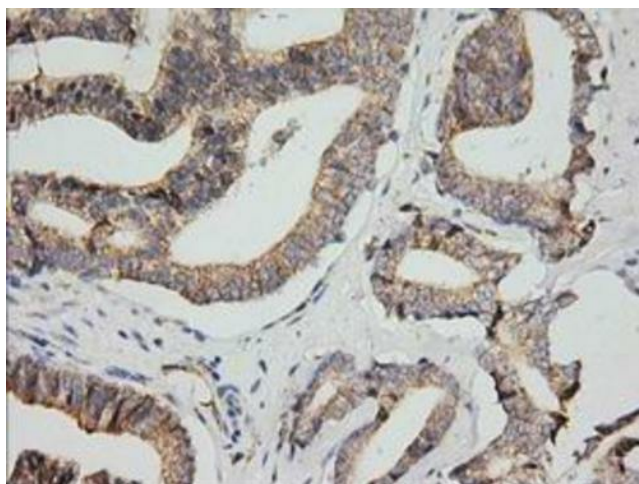
DLG3

**Protein Families:**

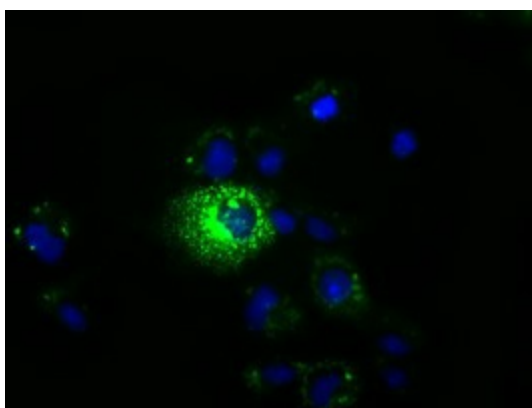
Druggable Genome

**Product images:**

HEK293T cells were transfected with the pCMV6-ENTRY control (Left lane) or pCMV6-ENTRY MPP3 ([RC208903], Right lane) cDNA for 48 hrs and lysed. Equivalent amounts of cell lysates (5 ug per lane) were separated by SDS-PAGE and immunoblotted with anti-MPP3. Positive lysates [LY419634] (100ug) and [LC419634] (20ug) can be purchased separately from OriGene.



Immunohistochemical staining of paraffin-embedded Human prostate tissue within the normal limits using anti-MPP3 mouse monoclonal antibody ([TA501306]) at 1:150 dilution.



Anti-MPP3 mouse monoclonal antibody ([TA501306]) immunofluorescent staining of COS7 cells transiently transfected by pCMV6-ENTRY MPP3 ([RC208903]).