

Product datasheet for **CF501270**

IGF2BP2 Mouse Monoclonal Antibody [Clone ID: OT11F9]

Product data:

Product Type:	Primary Antibodies
Clone Name:	OT11F9
Applications:	FC, IF, IHC, WB
Recommended Dilution:	WB 1:1000~2000, IHC 1:50, IF 1:100, FLOW 1:100
Reactivity:	Human, Dog, Monkey, Mouse, Rat
Host:	Mouse
Isotype:	IgG1
Clonality:	Monoclonal
Immunogen:	Full length human recombinant protein of human IGF2BP2(NP_006539) produced in HEK293T cell.
Formulation:	Lyophilized powder (original buffer 1X PBS, pH 7.3, 8% trehalose)
Reconstitution Method:	For reconstitution, we recommend adding 100uL distilled water to a final antibody concentration of about 1 mg/mL. To use this carrier-free antibody for conjugation experiment, we strongly recommend performing another round of desalting process. (OriGene recommends Zeba Spin Desalting Columns, 7KMWCO from Thermo Scientific)
Purification:	Purified from mouse ascites fluids or tissue culture supernatant by affinity chromatography (protein A/G)
Conjugation:	Unconjugated
Storage:	Store at -20°C as received.
Stability:	Stable for 12 months from date of receipt.
Predicted Protein Size:	65.9 kDa
Gene Name:	insulin like growth factor 2 mRNA binding protein 2
Database Link:	NP_006539 Entrez Gene 303824 Rat Entrez Gene 319765 Mouse Entrez Gene 478662 Dog Entrez Gene 700598 Monkey Entrez Gene 10644 Human Q9Y6M1



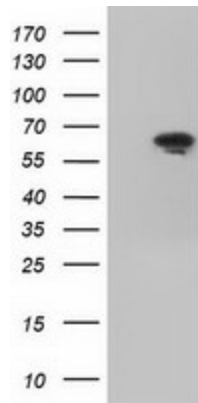
[View online »](#)

Background:

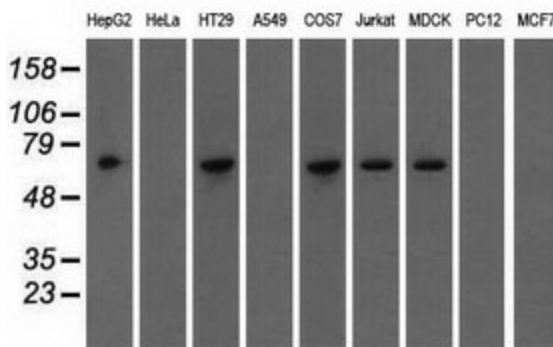
This gene encodes a member of the IGF-II mRNA-binding protein (IMP) family. The protein encoded by this gene contains several four KH domains and two RRM domains. It functions by binding to the 5' UTR of the insulin-like growth factor 2 (IGF2) mRNA and regulating IGF2 translation. Alternate transcriptional splice variants, encoding different isoforms, have been characterized. [provided by RefSeq]

Synonyms:

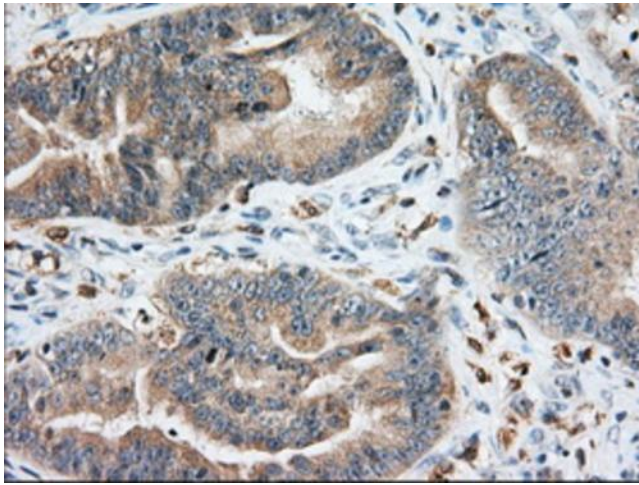
IMP-2; IMP2; VICKZ2

Product images:


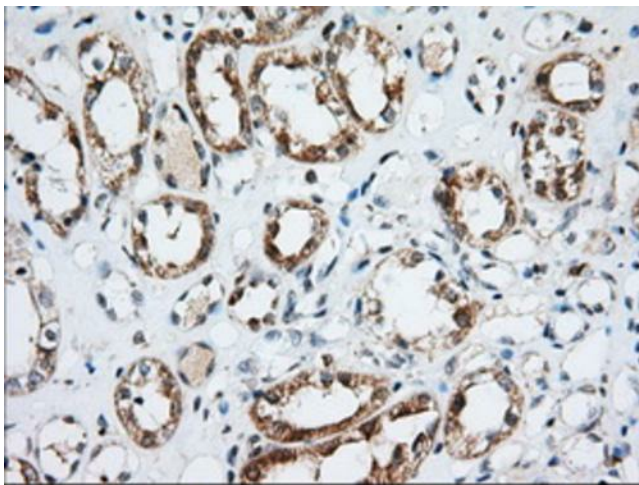
HEK293T cells were transfected with the pCMV6-ENTRY control (Left lane) or pCMV6-ENTRY IGF2BP2 ([RC205673], Right lane) cDNA for 48 hrs and lysed. Equivalent amounts of cell lysates (5 ug per lane) were separated by SDS-PAGE and immunoblotted with anti-IGF2BP2. Positive lysates [LY401961] (100ug) and [LC401961] (20ug) can be purchased separately from OriGene.



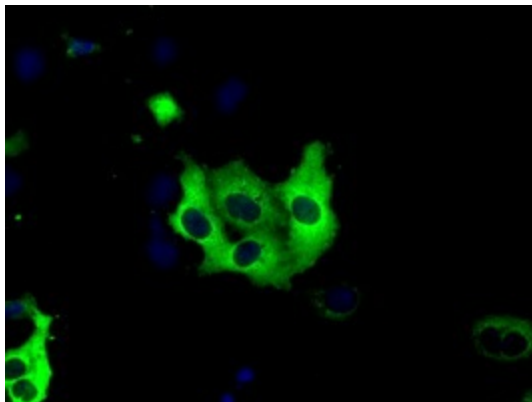
Western blot analysis of extracts (35ug) from 9 different cell lines by using anti-IGF2BP2 monoclonal antibody.



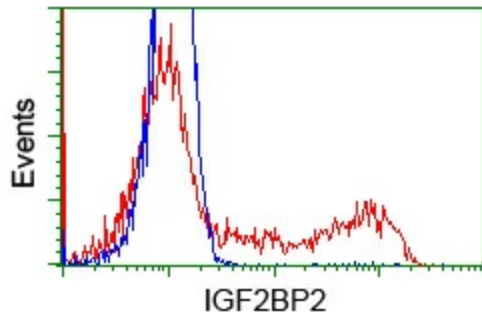
Immunohistochemical staining of paraffin-embedded Adenocarcinoma of Human colon tissue using anti-IGF2BP2 mouse monoclonal antibody. (Heat-induced epitope retrieval by 10mM citric buffer, pH6.0, 100°C for 10min, [TA501270], Dilution 1:50)



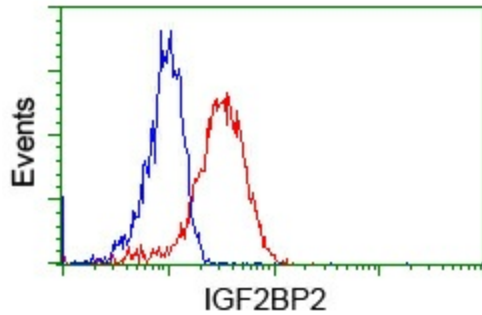
Immunohistochemical staining of paraffin-embedded Human Kidney tissue within the normal limits using anti-IGF2BP2 mouse monoclonal antibody. (Heat-induced epitope retrieval by 10mM citric buffer, pH6.0, 100°C for 10min, [TA501270], Dilution 1:50)



Anti-IGF2BP2 mouse monoclonal antibody ([TA501270]) immunofluorescent staining of COS7 cells transiently transfected by pCMV6-ENTRY IGF2BP2 ([RC205673]).



HEK293T cells transfected with either [RC205673] overexpress plasmid (Red) or empty vector control plasmid (Blue) were immunostained by anti-IGF2BP2 antibody ([TA501270]), and then analyzed by flow cytometry.



Flow cytometric Analysis of Jurkat cells, using anti-IGF2BP2 antibody ([TA501270]), (Red), compared to a nonspecific negative control antibody (TA50011), (Blue).