

Product datasheet for **CF501229**

BMAL1 (ARNTL) Mouse Monoclonal Antibody [Clone ID: OT1D1]

Product data:

| | |
|--------------------------------|--|
| Product Type: | Primary Antibodies |
| Clone Name: | OT1D1 |
| Applications: | FC, IF, IHC, WB |
| Recommended Dilution: | WB 1:500, IF 1:100, FLOW 1:100 |
| Reactivity: | Human, Mouse, Rat |
| Host: | Mouse |
| Isotype: | IgG1 |
| Clonality: | Monoclonal |
| Immunogen: | Full length human recombinant protein of human ARNTL (NP_001169) produced in HEK293T cell. |
| Formulation: | Lyophilized powder (original buffer 1X PBS, pH 7.3, 8% trehalose) |
| Reconstitution Method: | For reconstitution, we recommend adding 100uL distilled water to a final antibody concentration of about 1 mg/mL. To use this carrier-free antibody for conjugation experiment, we strongly recommend performing another round of desalting process. (OriGene recommends Zeba Spin Desalting Columns, 7KMWCO from Thermo Scientific) |
| Purification: | Purified from mouse ascites fluids or tissue culture supernatant by affinity chromatography (protein A/G) |
| Conjugation: | Unconjugated |
| Storage: | Store at -20°C as received. |
| Stability: | Stable for 12 months from date of receipt. |
| Predicted Protein Size: | 68.5 kDa |
| Gene Name: | aryl hydrocarbon receptor nuclear translocator like |
| Database Link: | NP_001169 Entrez Gene 11865 Mouse Entrez Gene 29657 Rat Entrez Gene 406 Human O00327 |



[View online »](#)

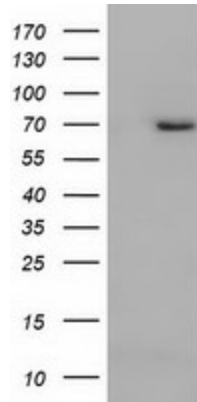
Background: The protein encoded by this gene is a basic helix-loop-helix protein that forms a heterodimer with CLOCK. This complex binds an E-box upstream of the PER1 gene, activating this gene and possibly other circadian rhythm-associated genes. Three transcript variants encoding two different isoforms have been found for this gene. [provided by RefSeq]

Synonyms: bHLHe5; BMAL1; BMAL1c; JAP3; MOP3; PASD3; TIC

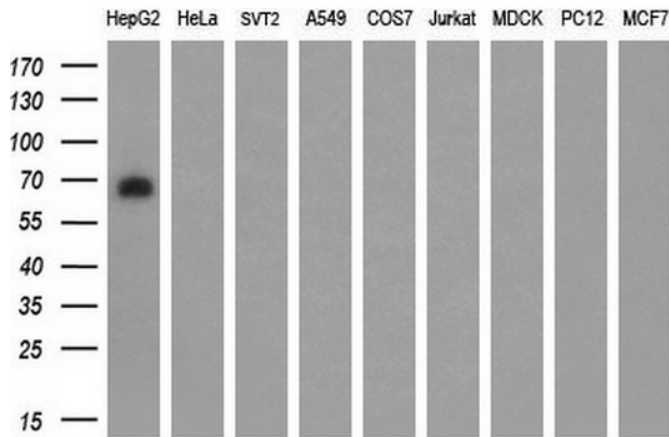
Protein Families: Druggable Genome, Transcription Factors

Protein Pathways: Circadian rhythm - mammal

Product images:



HEK293T cells were transfected with the pCMV6-ENTRY control (Left lane) or pCMV6-ENTRY ARNTL ([RC207870], Right lane) cDNA for 48 hrs and lysed. Equivalent amounts of cell lysates (5 ug per lane) were separated by SDS-PAGE and immunoblotted with anti-ARNTL. Positive lysates [LY400474] (100ug) and [LC400474] (20ug) can be purchased separately from OriGene.



Western blot analysis of extracts (35ug) from 9 different cell lines by using anti-ARNTL monoclonal antibody (HepG2: human; HeLa: human; SVT2: mouse; A549: human; COS7: monkey; Jurkat: human; MDCK: canine; PC12: rat; MCF7: human) (1:200).

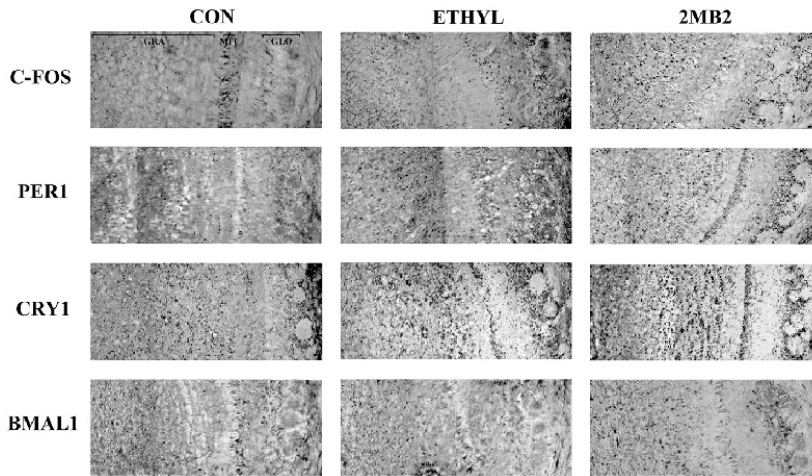
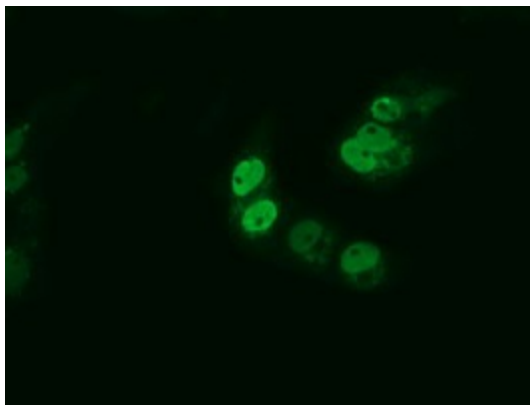
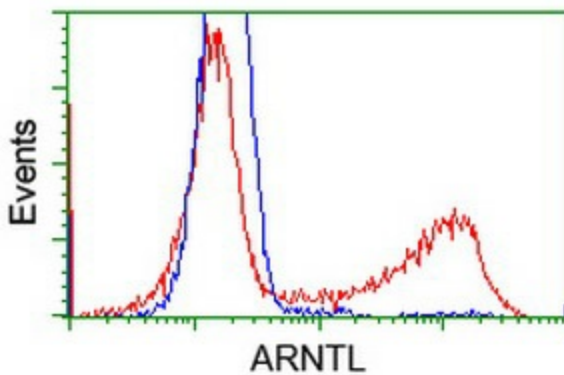


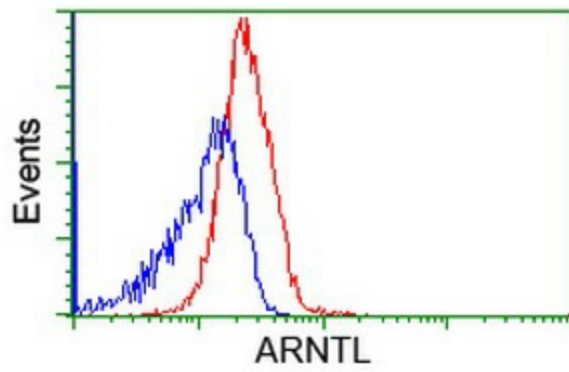
Figure from citation: Immunohistochemistry of ARNTL (BMAL1) protein level by using anti-ARNTL antibody in coronal sections of the main olfactory bulb (MOB) portion of 7-day-old rabbits. Dilution: 1:200 [View Citation](#). Heat-induced epitope retrieval by EDTA solution buffer pH 8.0 at 120°C for 3 min.



Anti-ARNTL mouse monoclonal antibody ([TA501229]) immunofluorescent staining of COS7 cells transiently transfected by pCMV6-ENTRY ARNTL ([RC207870]).



HEK293T cells transfected with either [RC207870] overexpress plasmid (Red) or empty vector control plasmid (Blue) were immunostained by anti-ARNTL antibody ([TA501229]), and then analyzed by flow cytometry.



Flow cytometric Analysis of Jurkat cells, using anti-ARNTL antibody ([TA501229]), (Red), compared to a nonspecific negative control antibody (TA50011), (Blue).