

Product datasheet for **CF501213**

H6PD Mouse Monoclonal Antibody [Clone ID: OTI2C12]

Product data:

Product Type:	Primary Antibodies
Clone Name:	OTI2C12
Applications:	FC, IF, IHC, WB
Recommended Dilution:	WB 1:500, IHC 1:50, IF 1:100, Flow 1:100
Reactivity:	Human
Host:	Mouse
Isotype:	IgG2b
Clonality:	Monoclonal
Immunogen:	Full length human recombinant protein of human H6PD (NP_004276) produced in HEK293T cell.
Formulation:	Lyophilized powder (original buffer 1X PBS, pH 7.3, 8% trehalose)
Reconstitution Method:	For reconstitution, we recommend adding 100uL distilled water to a final antibody concentration of about 1 mg/mL. To use this carrier-free antibody for conjugation experiment, we strongly recommend performing another round of desalting process. (OriGene recommends Zeba Spin Desalting Columns, 7KMWCO from Thermo Scientific)
Purification:	Purified from mouse ascites fluids or tissue culture supernatant by affinity chromatography (protein A/G)
Conjugation:	Unconjugated
Storage:	Store at -20°C as received.
Stability:	Stable for 12 months from date of receipt.
Predicted Protein Size:	88.7 kDa
Gene Name:	hexose-6-phosphate dehydrogenase/glucose 1-dehydrogenase
Database Link:	NP_004276 Entrez Gene 9563 Human O95479



[View online »](#)

Background:

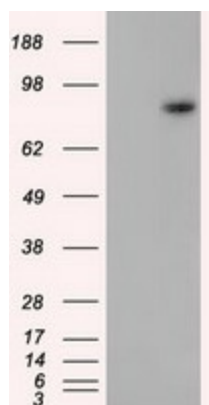
There are 2 forms of glucose-6-phosphate dehydrogenase. G form is X-linked and H form, encoded by this gene, is autosomally linked. This H form shows activity with other hexose-6-phosphates, especially galactose-6-phosphate, whereas the G form is specific for glucose-6-phosphate. Both forms are present in most tissues, but H form is not found in red cells.

Synonyms:

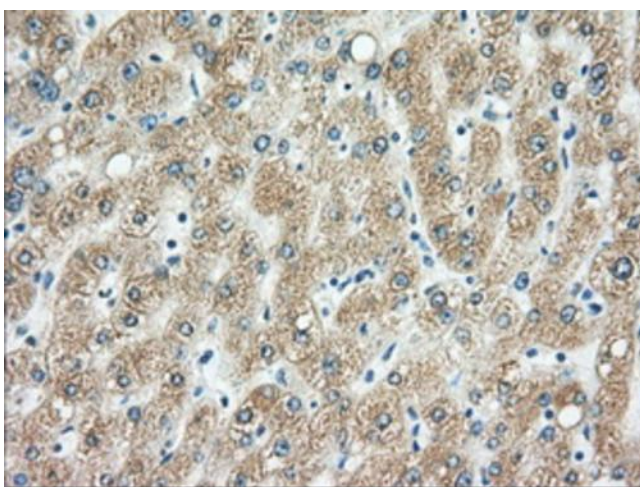
CORTRD1; G6PDH; GDH

Protein Pathways:

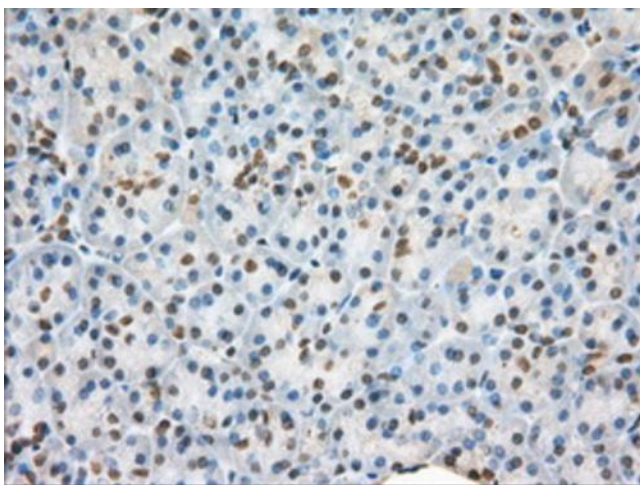
Metabolic pathways, Pentose phosphate pathway

Product images:


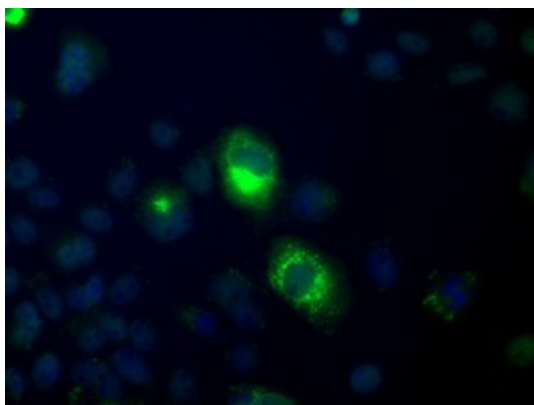
HEK293T cells were transfected with the pCMV6-ENTRY control (Left lane) or pCMV6-ENTRY H6PD ([RC209890], Right lane) cDNA for 48 hrs and lysed. Equivalent amounts of cell lysates (5 ug per lane) were separated by SDS-PAGE and immunoblotted with anti-H6PD. Positive lysates [LY401369] (100ug) and [LC401369] (20ug) can be purchased separately from OriGene.



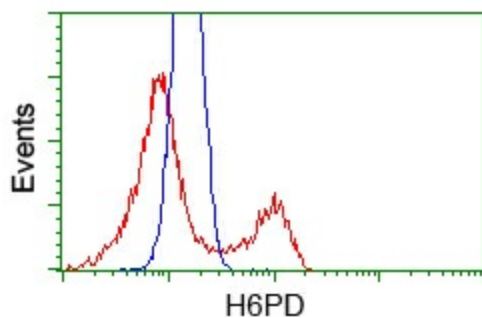
Immunohistochemical staining of paraffin-embedded liver tissue within the normal limits using anti-H6PD mouse monoclonal antibody. (Heat-induced epitope retrieval by 10mM citric buffer, pH6.0, 100°C for 10min, [TA501213], Dilution 1:50)



Immunohistochemical staining of paraffin-embedded pancreas tissue within the normal limits using anti-H6PD mouse monoclonal antibody. (Heat-induced epitope retrieval by 10mM citric buffer, pH6.0, 100°C for 10min, [TA501213], Dilution 1:50)



Anti-H6PD mouse monoclonal antibody ([TA501213]) immunofluorescent staining of COS7 cells transiently transfected by pCMV6-ENTRY H6PD ([RC209890]).



HEK293T cells transfected with either pCMV6-ENTRY H6PD ([RC209890]) (Red) or empty vector control plasmid (Blue) were immunostained with anti-H6PD mouse monoclonal ([TA501213]), and then analyzed by flow cytometry.