

Product datasheet for **CF501209**

EMG1 Mouse Monoclonal Antibody [Clone ID: OTI1B8]

Product data:

Product Type:	Primary Antibodies
Clone Name:	OTI1B8
Applications:	FC, IF, WB
Recommended Dilution:	WB 1:1000~2000, IF 1:100, FLOW 1:100
Reactivity:	Human, Dog, Monkey, Mouse, Rat
Host:	Mouse
Isotype:	IgG2b
Clonality:	Monoclonal
Immunogen:	Full length human recombinant protein of human EMG1(NP_006322) produced in HEK293T cell.
Formulation:	Lyophilized powder (original buffer 1X PBS, pH 7.3, 8% trehalose)
Reconstitution Method:	For reconstitution, we recommend adding 100uL distilled water to a final antibody concentration of about 1 mg/mL. To use this carrier-free antibody for conjugation experiment, we strongly recommend performing another round of desalting process. (OriGene recommends Zeba Spin Desalting Columns, 7KMWCO from Thermo Scientific)
Purification:	Purified from mouse ascites fluids or tissue culture supernatant by affinity chromatography (protein A/G)
Conjugation:	Unconjugated
Storage:	Store at -20°C as received.
Stability:	Stable for 12 months from date of receipt.
Predicted Protein Size:	26.5 kDa
Gene Name:	EMG1 N1-specific pseudouridine methyltransferase
Database Link:	NP_006322 Entrez Gene 14791 Mouse Entrez Gene 312706 Rat Entrez Gene 477708 Dog Entrez Gene 722122 Monkey Entrez Gene 10436 Human Q92979



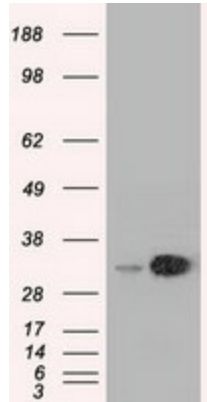
[View online »](#)

Background:

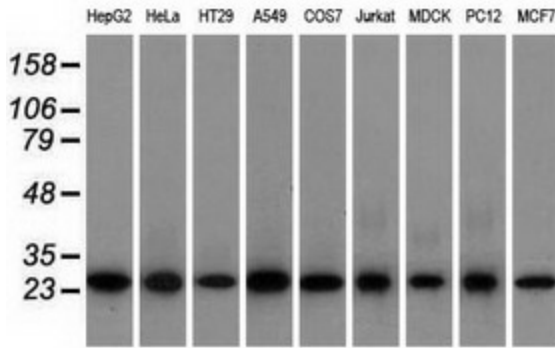
This gene encodes an essential, conserved eukaryotic protein involved in ribosome biogenesis. In yeast, the related protein is a component of the small subunit processome and is essential for biogenesis of the ribosomal 40S subunit. A mutation in this gene has been associated with Bowen-Conradi syndrome. COMPLETENESS: complete on the 3' end.

Synonyms:

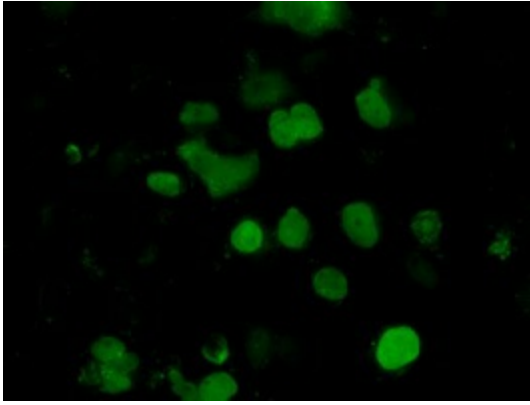
C2F; Grcc2f; NEP1

Product images:


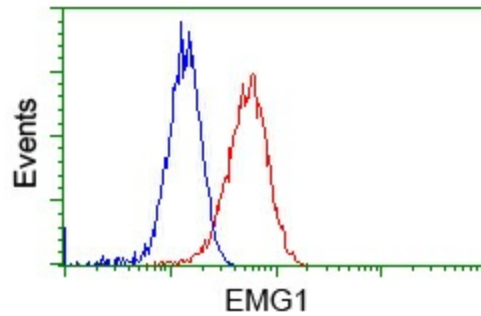
HEK293T cells were transfected with the pCMV6-ENTRY control (Cat# [PS100001], Left lane) or pCMV6-ENTRY EMG1 (Cat# [RC208885], Right lane) cDNA for 48 hrs and lysed. Equivalent amounts of cell lysates (5 ug per lane) were separated by SDS-PAGE and immunoblotted with anti-EMG1 (Cat# [TA501209]). Positive lysates [LY401906] (100ug) and [LC401906] (20ug) can be purchased separately from OriGene.



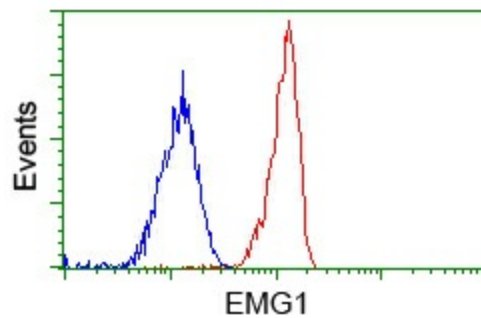
Western blot analysis of extracts (35ug) from 9 different cell lines by using anti-EMG1 monoclonal antibody.



Anti-EMG1 mouse monoclonal antibody ([TA501209]) immunofluorescent staining of COS7 cells transiently transfected by pCMV6-ENTRY EMG1 ([RC208885]).



Flow cytometric Analysis of HeLa cells, using anti-EMG1 antibody ([TA501209]), (Red), compared to a nonspecific negative control antibody (TA50011), (Blue).



Flow cytometric Analysis of Jurkat cells, using anti-EMG1 antibody ([TA501209]), (Red), compared to a nonspecific negative control antibody (TA50011), (Blue).