

Product datasheet for **CF501208**

cGKI (PRKG1) Mouse Monoclonal Antibody [Clone ID: OTI9A4]

Product data:

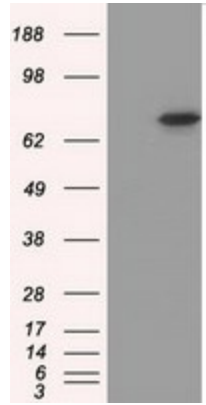
Product Type:	Primary Antibodies
Clone Name:	OTI9A4
Applications:	FC, IF, WB
Recommended Dilution:	WB 1:2000, IF 1:100, FLOW 1:100
Reactivity:	Human, Mouse, Rat
Host:	Mouse
Isotype:	IgG2b
Clonality:	Monoclonal
Immunogen:	Full length human recombinant protein of human PRKG1 (NP_006249) produced in HEK293T cell.
Formulation:	Lyophilized powder (original buffer 1X PBS, pH 7.3, 8% trehalose)
Reconstitution Method:	For reconstitution, we recommend adding 100uL distilled water to a final antibody concentration of about 1 mg/mL. To use this carrier-free antibody for conjugation experiment, we strongly recommend performing another round of desalting process. (OriGene recommends Zeba Spin Desalting Columns, 7KMWCO from Thermo Scientific)
Purification:	Purified from mouse ascites fluids or tissue culture supernatant by affinity chromatography (protein A/G)
Conjugation:	Unconjugated
Storage:	Store at -20°C as received.
Stability:	Stable for 12 months from date of receipt.
Predicted Protein Size:	77.6 kDa
Gene Name:	protein kinase cGMP-dependent 1
Database Link:	NP_006249 Entrez Gene 19091 Mouse Entrez Gene 54286 Rat Entrez Gene 5592 Human Q13976
Synonyms:	1; AAT8; cGK; cGK 1; cGK1; cGKI; cGKI-alpha; cGKI-BETA; PKG; PRKG1B; PRKGR1B
Protein Families:	Druggable Genome, Protein Kinase



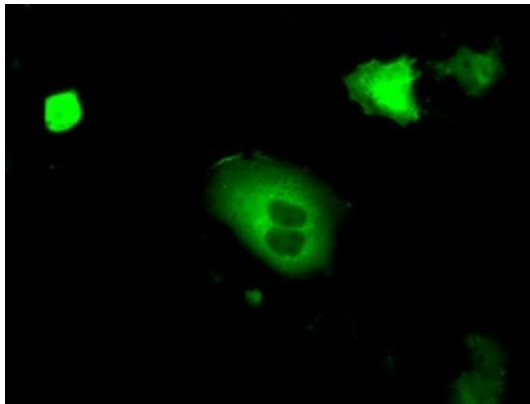
[View online »](#)

Protein Pathways: Gap junction, Long-term depression, Olfactory transduction, Vascular smooth muscle contraction

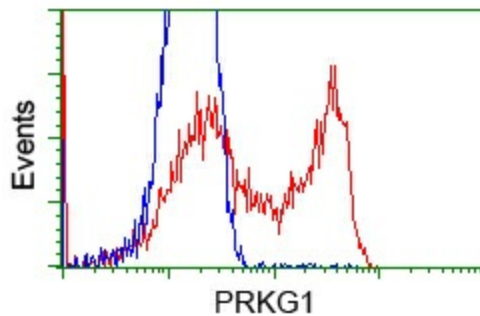
Product images:



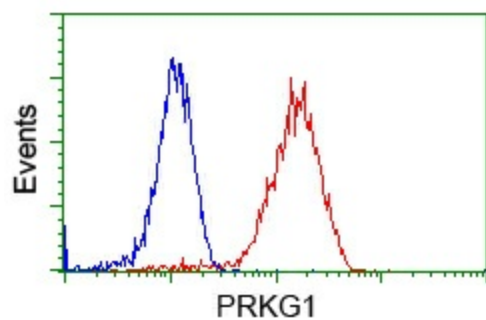
HEK293T cells were transfected with the pCMV6-ENTRY control (Left lane) or pCMV6-ENTRY PRKG1 ([RC220986], Right lane) cDNA for 48 hrs and lysed. Equivalent amounts of cell lysates (5 ug per lane) were separated by SDS-PAGE and immunoblotted with anti-PRKG1. Positive lysates [LY416766] (100ug) and [LC416766] (20ug) can be purchased separately from OriGene.



Anti-PRKG1 mouse monoclonal antibody ([TA501208]) immunofluorescent staining of COS7 cells transiently transfected by pCMV6-ENTRY PRKG1 ([RC220986]).



HEK293T cells transfected with either [RC220986] overexpress plasmid (Red) or empty vector control plasmid (Blue) were immunostained by anti-PRKG1 antibody ([TA501208]), and then analyzed by flow cytometry.



Flow cytometric Analysis of Jurkat cells, using anti-PRKG1 antibody ([TA501208]), (Red), compared to a nonspecific negative control antibody (TA50011), (Blue).