

Product datasheet for **CF501193**

IGBP1 Mouse Monoclonal Antibody [Clone ID: OTI4F6]

Product data:

Product Type:	Primary Antibodies
Clone Name:	OTI4F6
Applications:	FC, IF, WB
Recommended Dilution:	IF 1:100, FLOW 1:100
Reactivity:	Human
Host:	Mouse
Isotype:	IgG1
Clonality:	Monoclonal
Immunogen:	Full length human recombinant protein of human IGBP1 (NP_001542) produced in HEK293T cell.
Formulation:	Lyophilized powder (original buffer 1X PBS, pH 7.3, 8% trehalose)
Reconstitution Method:	For reconstitution, we recommend adding 100uL distilled water to a final antibody concentration of about 1 mg/mL. To use this carrier-free antibody for conjugation experiment, we strongly recommend performing another round of desalting process. (OriGene recommends Zeba Spin Desalting Columns, 7KMWCO from Thermo Scientific)
Purification:	Purified from mouse ascites fluids or tissue culture supernatant by affinity chromatography (protein A/G)
Conjugation:	Unconjugated
Storage:	Store at -20°C as received.
Stability:	Stable for 12 months from date of receipt.
Predicted Protein Size:	39.0 kDa
Gene Name:	immunoglobulin binding protein 1
Database Link:	NP_001542 Entrez Gene 3476 Human P78318



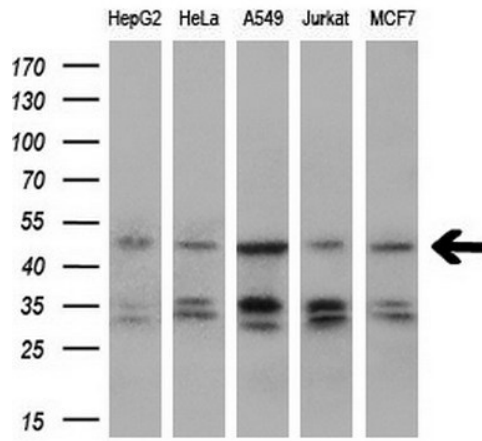
[View online »](#)

Background: The proliferation and differentiation of B cells is dependent upon a B-cell antigen receptor (BCR) complex. Binding of antigens to specific B-cell receptors results in a tyrosine phosphorylation reaction through the BCR complex and leads to multiple signal transduction pathways.

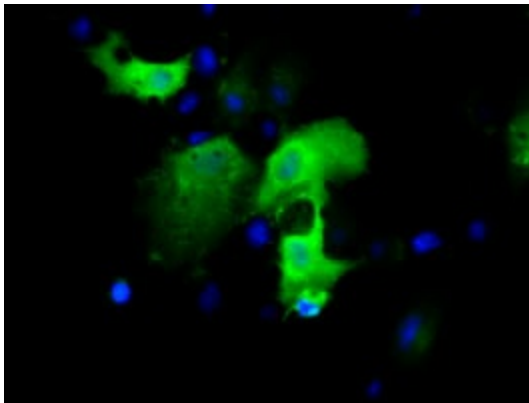
Synonyms: ALPHA-4; IBP1

Protein Families: Druggable Genome

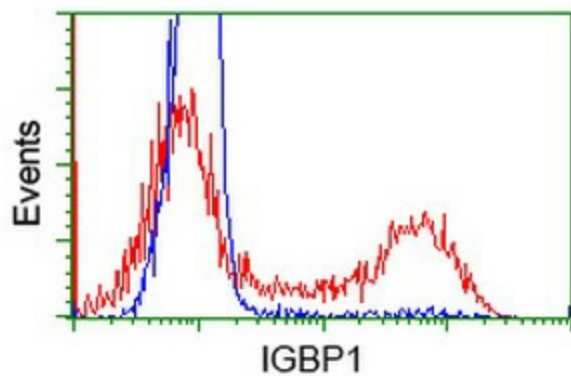
Product images:



Western blot analysis of extracts (10ug) from 5 different cell lines by using anti-IGBP1 monoclonal antibody (1:200).



Anti-IGBP1 mouse monoclonal antibody ([TA501193]) immunofluorescent staining of COS7 cells transiently transfected by pCMV6-ENTRY IGBP1 ([RC200387]).



HEK293T cells transfected with either [RC200387] overexpress plasmid (Red) or empty vector control plasmid (Blue) were immunostained by anti-IGBP1 antibody ([TA501193]), and then analyzed by flow cytometry.