

Product datasheet for **CF501163**

CD147 (BSG) Mouse Monoclonal Antibody [Clone ID: OTI3H1]

Product data:

Product Type:	Primary Antibodies
Clone Name:	OTI3H1
Applications:	FC, IF, IHC, WB
Recommended Dilution:	WB 1:200 - 1:1000, IHC 1:50, IF 1:100, FLOW 1:100
Reactivity:	Human
Host:	Mouse
Isotype:	IgG2b
Clonality:	Monoclonal
Immunogen:	Full length human recombinant protein of human BSG(NP_001719) produced in HEK293T cell.
Formulation:	Lyophilized powder (original buffer 1X PBS, pH 7.3, 8% trehalose)
Reconstitution Method:	For reconstitution, we recommend adding 100uL distilled water to a final antibody concentration of about 1 mg/mL. To use this carrier-free antibody for conjugation experiment, we strongly recommend performing another round of desalting process. (OriGene recommends Zeba Spin Desalting Columns, 7KMWCO from Thermo Scientific)
Purification:	Purified from mouse ascites fluids or tissue culture supernatant by affinity chromatography (protein A/G)
Conjugation:	Unconjugated
Storage:	Store at -20°C as received.
Stability:	Stable for 12 months from date of receipt.
Predicted Protein Size:	40.2 kDa
Gene Name:	basigin (Ok blood group)
Database Link:	NP_001719 Entrez Gene 682 Human P35613

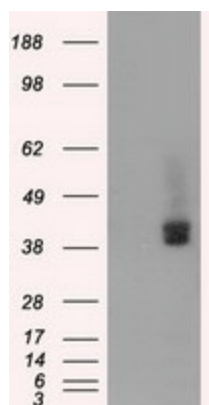
[View online »](#)

Background: The protein encoded by this gene is a plasma membrane protein that is important in spermatogenesis, embryo implantation, neural network formation, and tumor progression. The encoded protein is also a member of the immunoglobulin superfamily. Multiple transcript variants encoding different isoforms have been found for this gene.

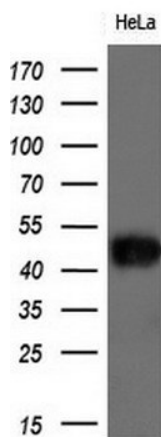
Synonyms: 5F7; CD147; EMMPRIN; OK; TCSF

Protein Families: Druggable Genome, ES Cell Differentiation/IPS, Transmembrane

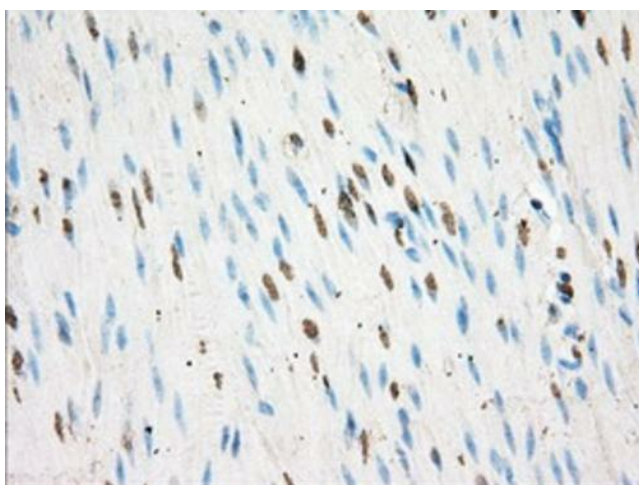
Product images:



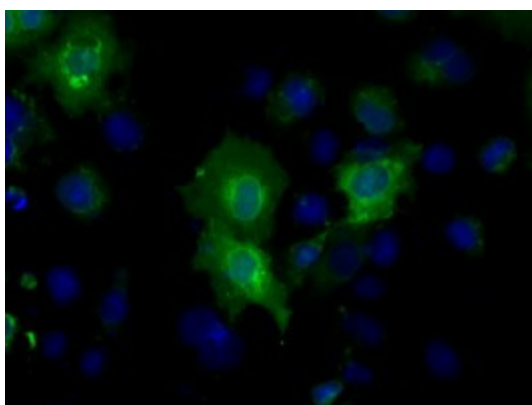
HEK293T cells were transfected with the pCMV6-ENTRY control (Left lane) or pCMV6-ENTRY BSG ([RC219464], Right lane) cDNA for 48 hrs and lysed. Equivalent amounts of cell lysates (5 ug per lane) were separated by SDS-PAGE and immunoblotted with anti-BSG. Positive lysates [LY419777] (100ug) and [LC419777] (20ug) can be purchased separately from OriGene.



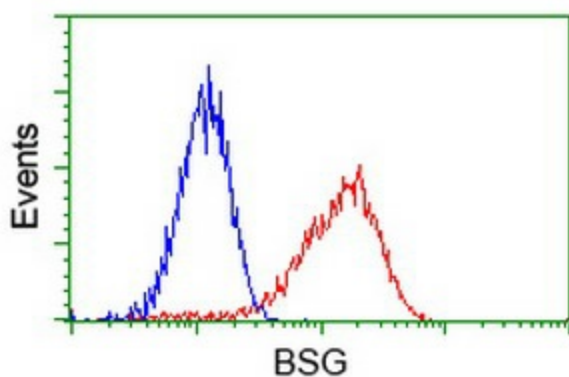
Western blot analysis of extracts (10ug) from 1 cell line by using anti-BSG monoclonal antibody at 1:200.



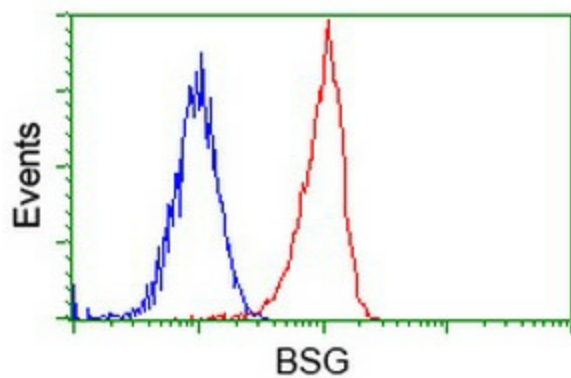
Immunohistochemical staining of paraffin-embedded Human colon tissue within the normal limits using anti-BSG mouse monoclonal antibody. (Heat-induced epitope retrieval by 10mM citric buffer, pH6.0, 100°C for 10min, [TA501163])



Anti-BSG mouse monoclonal antibody ([TA501163]) immunofluorescent staining of COS7 cells transiently transfected by pCMV6-ENTRY BSG ([RC219464]).



Flow cytometric Analysis of Hela cells, using anti-BSG antibody ([TA501163]), (Red), compared to a nonspecific negative control antibody (TA50011), (Blue).



Flow cytometric Analysis of Jurkat cells, using anti-BSG antibody ([TA501163]), (Red), compared to a nonspecific negative control antibody (TA50011), (Blue).