

Product datasheet for **CF501152**

PDE4A Mouse Monoclonal Antibody [Clone ID: OT1E3]

Product data:

Product Type:	Primary Antibodies
Clone Name:	OT1E3
Applications:	IF, WB
Recommended Dilution:	WB 1:3000, IF 1:100, Flow 1:100
Reactivity:	Human, Rat
Host:	Mouse
Isotype:	IgG2a
Clonality:	Monoclonal
Immunogen:	Full length human recombinant protein of human PDE4A (NP_006193) produced in HEK293T cell.
Formulation:	Lyophilized powder (original buffer 1X PBS, pH 7.3, 8% trehalose)
Reconstitution Method:	For reconstitution, we recommend adding 100uL distilled water to a final antibody concentration of about 1 mg/mL. To use this carrier-free antibody for conjugation experiment, we strongly recommend performing another round of desalting process. (OriGene recommends Zeba Spin Desalting Columns, 7KMWCO from Thermo Scientific)
Purification:	Purified from mouse ascites fluids or tissue culture supernatant by affinity chromatography (protein A/G)
Conjugation:	Unconjugated
Storage:	Store at -20°C as received.
Stability:	Stable for 12 months from date of receipt.
Predicted Protein Size:	72 kDa
Gene Name:	phosphodiesterase 4A
Database Link:	NP_006193 Entrez Gene 5141 Human P27815



[View online »](#)

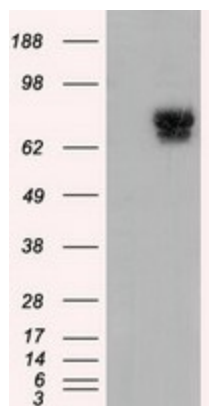
Background: Cyclic nucleotides are important second messengers that regulate and mediate a number of cellular responses to extracellular signals, such as hormones, light, and neurotransmitters. Cyclic nucleotide phosphodiesterases (PDEs) regulate the cellular concentrations of cyclic nucleotides and thereby play a role in signal transduction. PDE4A is a class IV cAMP-specific PDE

Synonyms: DPDE2; PDE4; PDE46

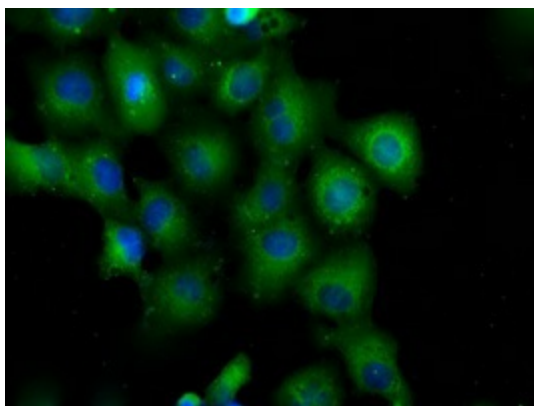
Protein Families: Druggable Genome

Protein Pathways: Progesterone-mediated oocyte maturation, Purine metabolism

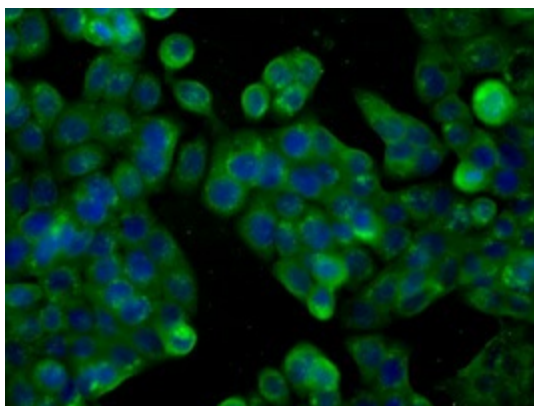
Product images:



HEK293T cells were transfected with the pCMV6-ENTRY control (Left lane) or pCMV6-ENTRY PDE4A ([RC207765], Right lane) cDNA for 48 hrs and lysed. Equivalent amounts of cell lysates (5 ug per lane) were separated by SDS-PAGE and immunoblotted with anti-PDE4A.



Anti-PDE4A mouse monoclonal antibody ([TA501152]) immunofluorescent staining of COS7 cells transiently transfected by pCMV6-ENTRY PDE4A ([RC207765]).



Immunofluorescent staining of HT29 cells using anti-PDE4A mouse monoclonal antibody ([TA501152]).