

## Product datasheet for **CF501121**

### NIT2 Mouse Monoclonal Antibody [Clone ID: OT15A3]

#### Product data:

Product Type:	Primary Antibodies
Clone Name:	OT15A3
Applications:	IF, IHC, WB
Recommended Dilution:	WB 1:2000, IHC 1:50, IF 1:100
Reactivity:	Human, Mouse, Rat
Host:	Mouse
Isotype:	IgG2a
Clonality:	Monoclonal
Immunogen:	Full length human recombinant protein of human NIT2 (NP_064587) produced in HEK293T cell.
Formulation:	Lyophilized powder (original buffer 1X PBS, pH 7.3, 8% trehalose)
Reconstitution Method:	For reconstitution, we recommend adding 100uL distilled water to a final antibody concentration of about 1 mg/mL. To use this carrier-free antibody for conjugation experiment, we strongly recommend performing another round of desalting process. (OriGene recommends Zeba Spin Desalting Columns, 7KMWCO from Thermo Scientific)
Purification:	Purified from mouse ascites fluids or tissue culture supernatant by affinity chromatography (protein A/G)
Conjugation:	Unconjugated
Storage:	Store at -20°C as received.
Stability:	Stable for 12 months from date of receipt.
Predicted Protein Size:	30.4 kDa
Gene Name:	nitrilase family member 2
Database Link:	<a href="#">NP_064587</a> <a href="#">Entrez Gene 52633 Mouse</a> <a href="#">Entrez Gene 288174 Rat</a> <a href="#">Entrez Gene 56954 Human</a> <a href="#">Q9NQR4</a>

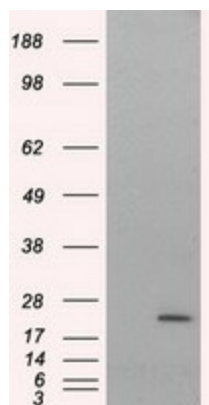


[View online »](#)

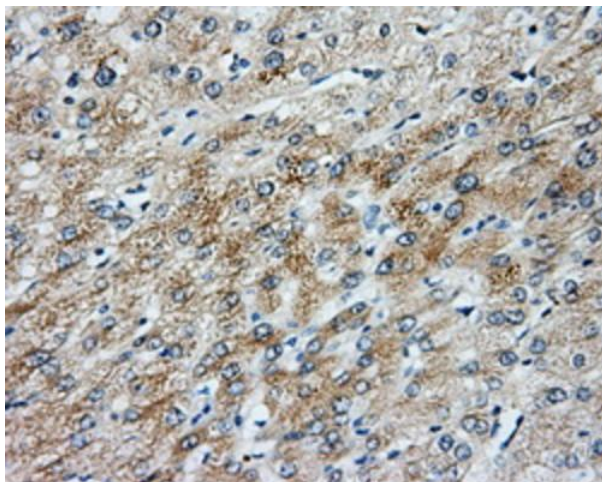
**Background:** Has a omega-amidase activity. The role of omega-amidase is to remove potentially toxic intermediates by converting alpha-ketoglutarate and alpha-ketosuccinamate to biologically useful alpha-ketoglutarate and oxaloacetate, respectively. Overexpression decreases the colony-forming capacity of cultured cells by arresting cells in the G2 phase of the cell cycle

**Synonyms:** HEL-S-8a

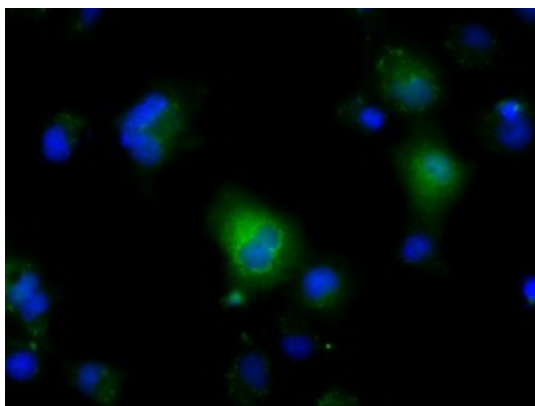
**Product images:**



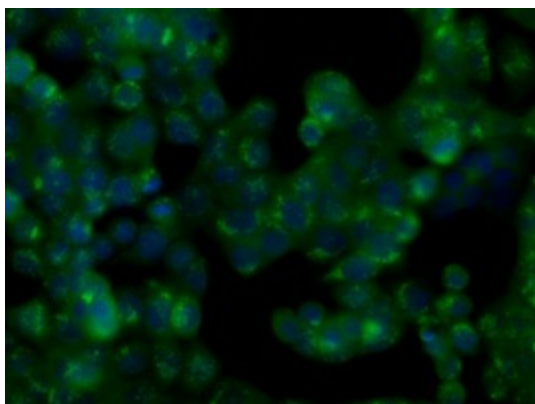
HEK293T cells were transfected with the pCMV6-ENTRY control (Left lane) or pCMV6-ENTRY NIT2 ([RC210660], Right lane) cDNA for 48 hrs and lysed. Equivalent amounts of cell lysates (5 ug per lane) were separated by SDS-PAGE and immunoblotted with anti-NIT2. Positive lysates [LY402761] (100ug) and [LC402761] (20ug) can be purchased separately from OriGene.



Immunohistochemical staining of paraffin-embedded liver tissue within the normal limits using anti-NIT2 mouse monoclonal antibody. (Heat-induced epitope retrieval by 10mM citric buffer, pH6.0, 100°C for 10min, [TA501121], Dilution 1:50)



Anti-NIT2 mouse monoclonal antibody ([TA501121]) immunofluorescent staining of COS7 cells transiently transfected by pCMV6-ENTRY NIT2 ([RC210660]).



Immunofluorescent staining of HT29 cells using anti-NIT2 mouse monoclonal antibody ([TA501121]).