

Product datasheet for **CF501107**

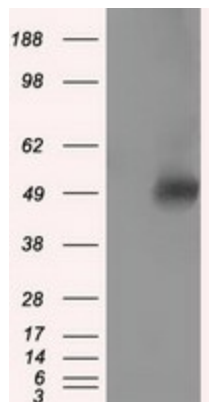
KIAA1576 (VAT1L) Mouse Monoclonal Antibody [Clone ID: OTI1H3]

Product data:

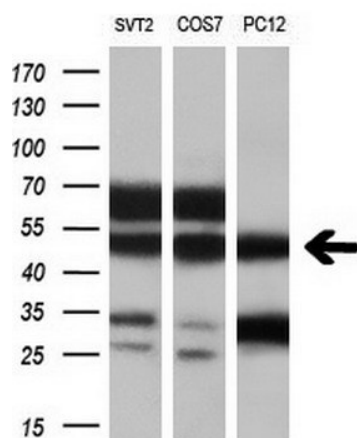
Product Type:	Primary Antibodies
Clone Name:	OTI1H3
Applications:	FC, IF, IHC, WB
Recommended Dilution:	WB 1:2000, IHC 1:50, IF 1:100, Flow 1:100
Reactivity:	Human, Mouse, Rat
Host:	Mouse
Isotype:	IgG1
Clonality:	Monoclonal
Immunogen:	Full length human recombinant protein of human VAT1L (NP_065978) produced in HEK293T cell.
Formulation:	Lyophilized powder (original buffer 1X PBS, pH 7.3, 8% trehalose)
Reconstitution Method:	For reconstitution, we recommend adding 100uL distilled water to a final antibody concentration of about 1 mg/mL. To use this carrier-free antibody for conjugation experiment, we strongly recommend performing another round of desalting process. (OriGene recommends Zeba Spin Desalting Columns, 7KMWCO from Thermo Scientific)
Purification:	Purified from mouse ascites fluids or tissue culture supernatant by affinity chromatography (protein A/G)
Conjugation:	Unconjugated
Storage:	Store at -20°C as received.
Stability:	Stable for 12 months from date of receipt.
Predicted Protein Size:	45.7 kDa
Gene Name:	vesicle amine transport 1 like
Database Link:	NP_065978 Entrez Gene 270097 Mouse Entrez Gene 57687 Human Q9HCJ6
Synonyms:	KIAA1576
Protein Families:	Druggable Genome



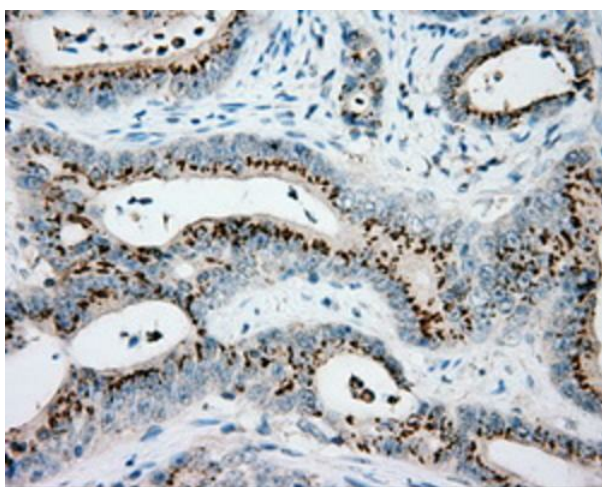
[View online »](#)

Product images:


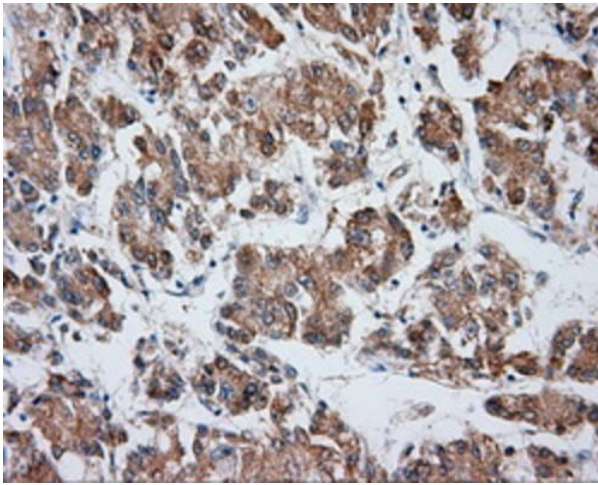
HEK293T cells were transfected with the pCMV6-ENTRY control (Cat# [PS100001], Left lane) or pCMV6-ENTRY VAT1L (Cat# [RC207266], Right lane) cDNA for 48 hrs and lysed. Equivalent amounts of cell lysates (5 ug per lane) were separated by SDS-PAGE and immunoblotted with anti-VAT1L(Cat# [TA501107]). Positive lysates [LY412225] (100ug) and [LC412225] (20ug) can be purchased separately from OriGene.



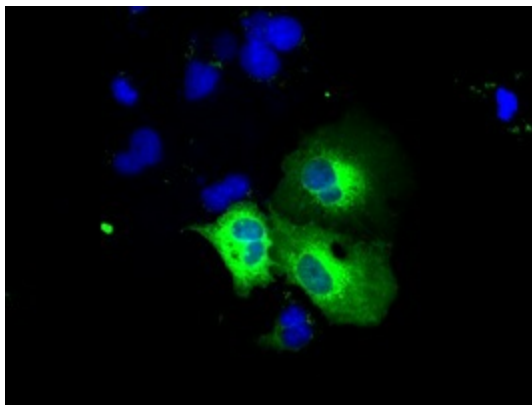
Western blot analysis of extracts (10ug) from 3 different cell lines by using anti-VAT1L monoclonal antibody (1:200).



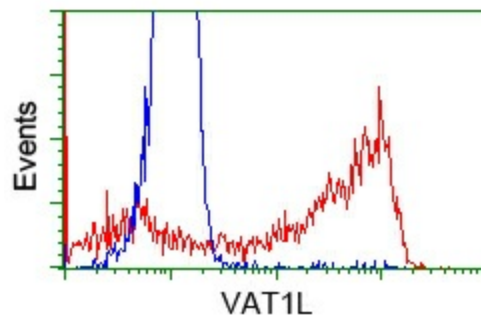
Immunohistochemical staining of paraffin-embedded Adenocarcinoma of colon tissue using anti-VAT1L mouse monoclonal antibody. (Heat-induced epitope retrieval by 10mM citric buffer, pH6.0, 100°C for 10min, [TA501107], Dilution 1:50)



Immunohistochemical staining of paraffin-embedded Carcinoma of liver tissue using anti-VAT1L mouse monoclonal antibody. (Heat-induced epitope retrieval by 10mM citric buffer, pH6.0, 100°C for 10min, [TA501107], Dilution 1:50)



Anti-VAT1L mouse monoclonal antibody ([TA501107]) immunofluorescent staining of COS7 cells transiently transfected by pCMV6-ENTRY VAT1L ([RC207266]).



HEK293T cells transfected with either pCMV6-ENTRY VAT1L ([RC207266]) (Red) or empty vector control plasmid (Blue) were immunostained with anti-VAT1L mouse monoclonal ([TA501107]), and then analyzed by flow cytometry.