

Product datasheet for **CF501091**

BTK Mouse Monoclonal Antibody [Clone ID: OTI12H4]

Product data:

Product Type:	Primary Antibodies
Clone Name:	OTI12H4
Applications:	FC, IF, IHC, WB
Recommended Dilution:	WB 1:500, IHC 1:50, IF 1:100, Flow 1:100
Reactivity:	Human, Mouse, Rat
Host:	Mouse
Isotype:	IgG3
Clonality:	Monoclonal
Immunogen:	Full length human recombinant protein of human BTK (NP_000052) produced in HEK293T cell.
Formulation:	Lyophilized powder (original buffer 1X PBS, pH 7.3, 8% trehalose)
Reconstitution Method:	For reconstitution, we recommend adding 100uL distilled water to a final antibody concentration of about 1 mg/mL. To use this carrier-free antibody for conjugation experiment, we strongly recommend performing another round of desalting process. (OriGene recommends Zeba Spin Desalting Columns, 7KMWCO from Thermo Scientific)
Purification:	Purified from mouse ascites fluids or tissue culture supernatant by affinity chromatography (protein A/G)
Conjugation:	Unconjugated
Storage:	Store at -20°C as received.
Stability:	Stable for 12 months from date of receipt.
Predicted Protein Size:	76.1 kDa
Gene Name:	Bruton tyrosine kinase
Database Link:	NP_000052 Entrez Gene 12229 Mouse Entrez Gene 367901 Rat Entrez Gene 695 Human Q06187



[View online »](#)

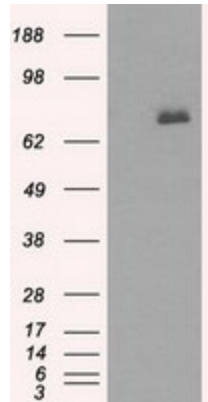
Background: The protein encoded by this gene plays a crucial role in B-cell development. Mutations in this gene cause X-linked agammaglobulinemia type 1, which is an immunodeficiency characterized by the failure to produce mature B lymphocytes, and associated with a failure of Ig heavy chain rearrangement.

Synonyms: AGMX1; AT; ATK; BPK; IMD1; PSCTK1; XLA

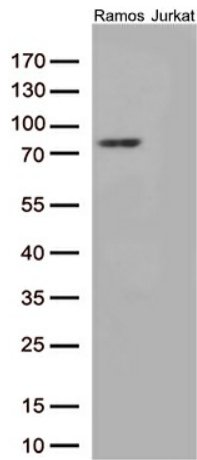
Protein Families: Druggable Genome, Protein Kinase

Protein Pathways: B cell receptor signaling pathway, Fc epsilon RI signaling pathway, Primary immunodeficiency

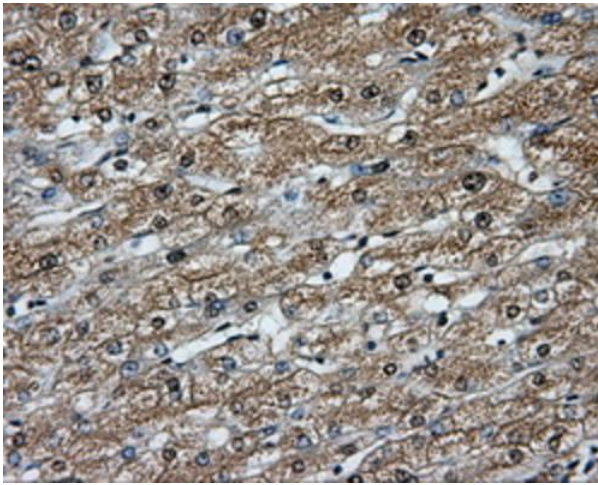
Product images:



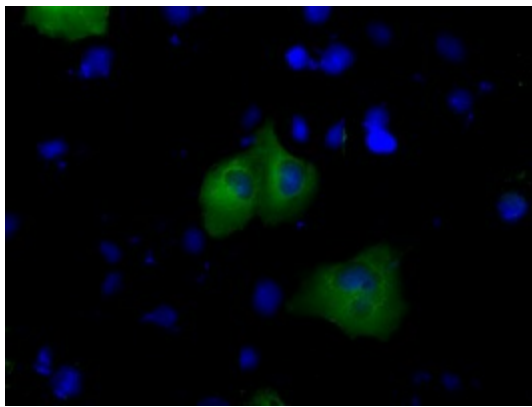
HEK293T cells were transfected with the pCMV6-ENTRY control (Left lane) or pCMV6-ENTRY BTK ([RC211582], Right lane) cDNA for 48 hrs and lysed. Equivalent amounts of cell lysates (5 ug per lane) were separated by SDS-PAGE and immunoblotted with anti-BTK. Positive lysates [LY424947] (100ug) and [LC424947] (20ug) can be purchased separately from OriGene.



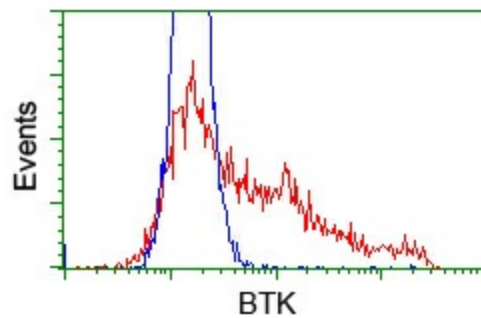
Western blot analysis of extracts (35ug) from 2 different cell lines by using anti-BTK monoclonal antibody (1:500).



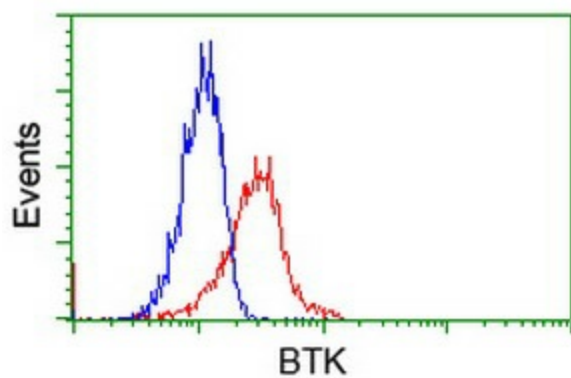
Immunohistochemical staining of paraffin-embedded liver tissue within the normal limits using anti-BTK mouse monoclonal antibody. Heat-induced epitope retrieval by EDTA solution buffer pH 8.0 at 120°C for 3 min.



Anti-BTK mouse monoclonal antibody ([TA501091]) immunofluorescent staining of COS7 cells transiently transfected by pCMV6-ENTRY BTK ([RC211582]).



HEK293T cells transfected with either pCMV6-ENTRY BTK ([RC211582]) (Red) or empty vector control plasmid (Blue) were immunostained with anti-BTK mouse monoclonal ([TA501091]), and then analyzed by flow cytometry.



Flow cytometric Analysis of Jurkat cells, using anti-BTK antibody ([TA501091]), (Red), compared to a nonspecific negative control antibody, (Blue).