

## Product datasheet for **CF501084**

### **NIT1 Mouse Monoclonal Antibody [Clone ID: OTI3A11]**

#### **Product data:**

<b>Product Type:</b>	Primary Antibodies
<b>Clone Name:</b>	OTI3A11
<b>Applications:</b>	FC, IF, IHC, WB
<b>Recommended Dilution:</b>	WB 1:2000, IHC 1:50, IF 1:100, Flow 1:100
<b>Reactivity:</b>	Human, Mouse, Rat
<b>Host:</b>	Mouse
<b>Isotype:</b>	IgG1
<b>Clonality:</b>	Monoclonal
<b>Immunogen:</b>	Full length human recombinant protein of human NIT1 (NP_005591) produced in HEK293T cell.
<b>Formulation:</b>	Lyophilized powder (original buffer 1X PBS, pH 7.3, 8% trehalose)
<b>Reconstitution Method:</b>	For reconstitution, we recommend adding 100uL distilled water to a final antibody concentration of about 1 mg/mL. To use this carrier-free antibody for conjugation experiment, we strongly recommend performing another round of desalting process. (OriGene recommends Zeba Spin Desalting Columns, 7KMWCO from Thermo Scientific)
<b>Purification:</b>	Purified from mouse ascites fluids or tissue culture supernatant by affinity chromatography (protein A/G)
<b>Conjugation:</b>	Unconjugated
<b>Storage:</b>	Store at -20°C as received.
<b>Stability:</b>	Stable for 12 months from date of receipt.
<b>Predicted Protein Size:</b>	35.7 kDa
<b>Gene Name:</b>	nitrilase 1
<b>Database Link:</b>	<a href="#">NP_005591</a> <a href="#">Entrez Gene 27045 Mouse</a> <a href="#">Entrez Gene 289222 Rat</a> <a href="#">Entrez Gene 4817 Human</a> <a href="#">Q86X76</a>



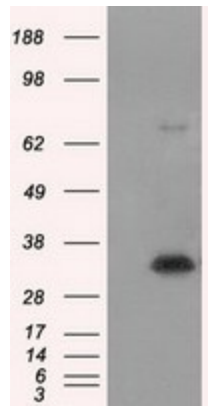
[View online »](#)

**Background:**

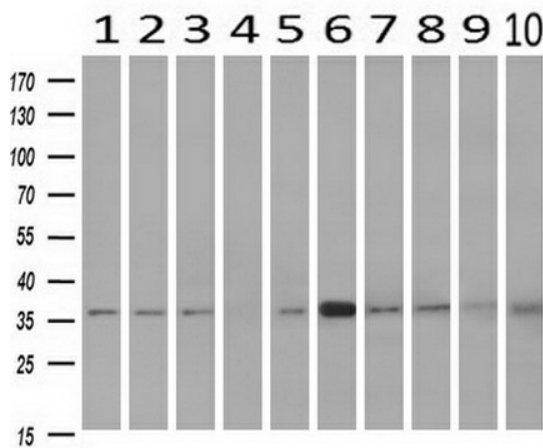
Play a role in cell growth and apoptosis: loss of expression promotes cell growth and resistance to DNA damage stress. Has tumor suppressor properties that enhances the apoptotic responsiveness in cancer cells; this effect is additive to the tumor suppressor activity of FHIT. It is also a negative regulator of primary T-cells. Has apparently no omega-amidase activity such as NIT2.

**Synonyms:**

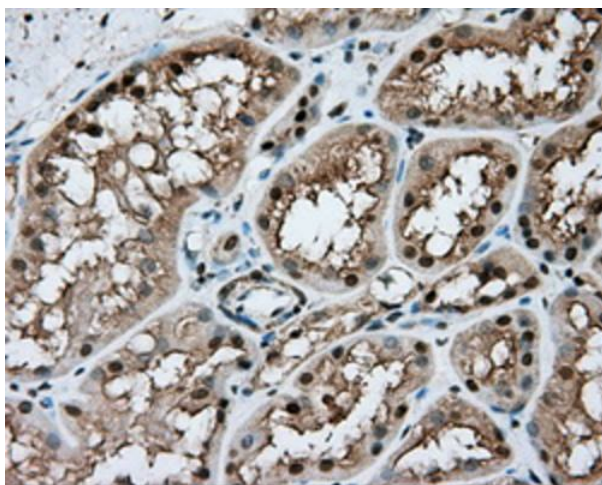
MGC57670

**Product images:**


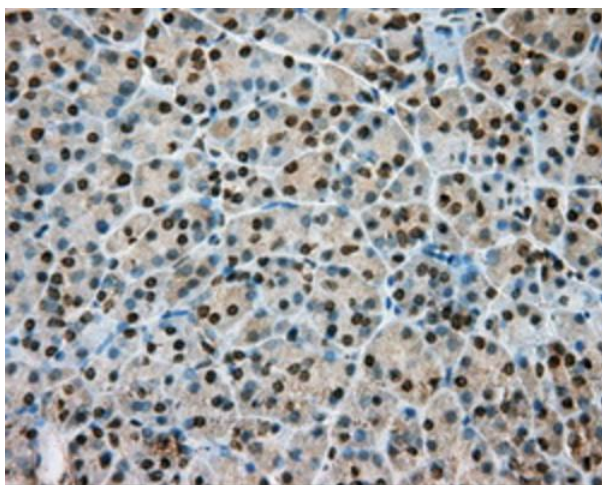
HEK293T cells were transfected with the pCMV6-ENTRY control (Cat# [PS100001], Left lane) or pCMV6-ENTRY NIT1 (Cat# [RC211519], Right lane) cDNA for 48 hrs and lysed. Equivalent amounts of cell lysates (5 ug per lane) were separated by SDS-PAGE and immunoblotted with anti-NIT1 (Cat# [TA501084]). Positive lysates [LY401717] (100ug) and [LC401717] (20ug) can be purchased separately from OriGene.



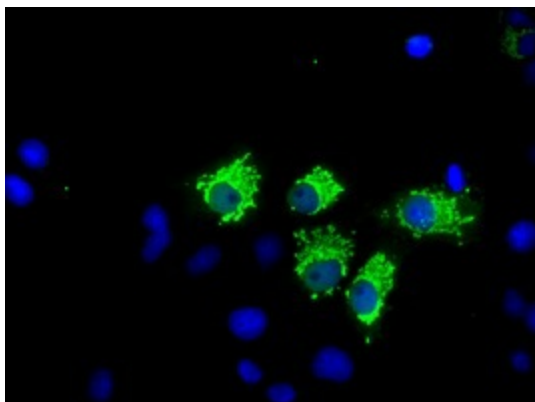
Western blot analysis of extracts (10ug) from 10 Human tissue by using anti-NIT1 monoclonal antibody at 1:500 (1: Testis; 2: Omentum; 3: Uterus; 4: Breast; 5: Brain; 6: Liver; 7: Ovary; 8: Thyroid gland; 9: colon; 10: spleen).



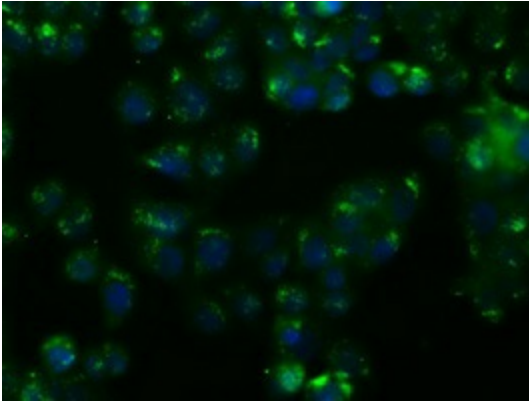
Immunohistochemical staining of paraffin-embedded kidney tissue within the normal limits using anti-NIT1 mouse monoclonal antibody. Heat-induced epitope retrieval by EDTA solution buffer pH 8.0 at 120°C for 3 min.



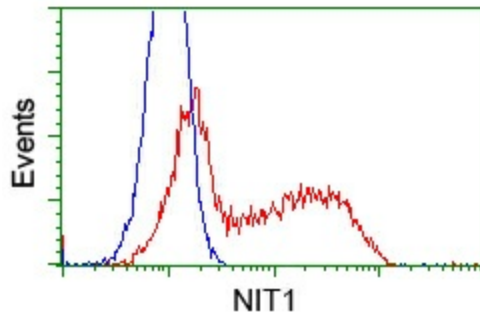
Immunohistochemical staining of paraffin-embedded pancreas tissue within the normal limits using anti-NIT1 mouse monoclonal antibody. Heat-induced epitope retrieval by EDTA solution buffer pH 8.0 at 120°C for 3 min.



Anti-NIT1 mouse monoclonal antibody ([TA501084]) immunofluorescent staining of COS7 cells transiently transfected by pCMV6-ENTRY NIT1 ([RC211519]).



Immunofluorescent staining of HT29 cells using anti-NIT1 mouse monoclonal antibody (TA501084).



HEK293T cells transfected with either pCMV6-ENTRY NIT1 (RC211519) (Red) or empty vector control plasmid (Blue) were immunostained with anti-NIT1 mouse monoclonal (TA501084), and then analyzed by flow cytometry.