

## Product datasheet for **CF501072**

### MSMB Mouse Monoclonal Antibody [Clone ID: OTI6C7]

#### Product data:

Product Type:	Primary Antibodies
Clone Name:	OTI6C7
Applications:	IF, WB
Recommended Dilution:	WB 1:2000, IHC 1:50, IF 1:100
Reactivity:	Human
Host:	Mouse
Isotype:	IgG1
Clonality:	Monoclonal
Immunogen:	Full length human recombinant protein of human MSMB (NP_002434) produced in HEK293T cell.
Formulation:	Lyophilized powder (original buffer 1X PBS, pH 7.3, 8% trehalose)
Reconstitution Method:	For reconstitution, we recommend adding 100uL distilled water to a final antibody concentration of about 1 mg/mL. To use this carrier-free antibody for conjugation experiment, we strongly recommend performing another round of desalting process. (OriGene recommends Zeba Spin Desalting Columns, 7KMWCO from Thermo Scientific)
Purification:	Purified from mouse ascites fluids or tissue culture supernatant by affinity chromatography (protein A/G)
Conjugation:	Unconjugated
Storage:	Store at -20°C as received.
Stability:	Stable for 12 months from date of receipt.
Predicted Protein Size:	10.7 kDa
Gene Name:	Homo sapiens microseminoprotein beta (MSMB), transcript variant PSP94, mRNA.
Database Link:	<a href="#">NP_002434</a> <a href="#">Entrez Gene 4477 Human P08118</a>



[View online »](#)

**Background:**

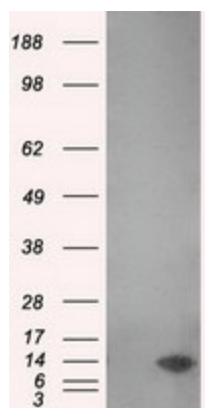
The protein encoded by this gene is a member of the immunoglobulin binding factor family. It is synthesized by the epithelial cells of the prostate gland and secreted into the seminal plasma. This protein has inhibin-like activity. It may have a role as an autocrine paracrine factor in uterine, breast and other female reproductive tissues. The expression of the encoded protein is found to be decreased in prostate cancer. Two alternatively spliced transcript variants encoding different isoforms are described for this gene. The use of alternate polyadenylation sites has been found for this gene.

**Synonyms:**

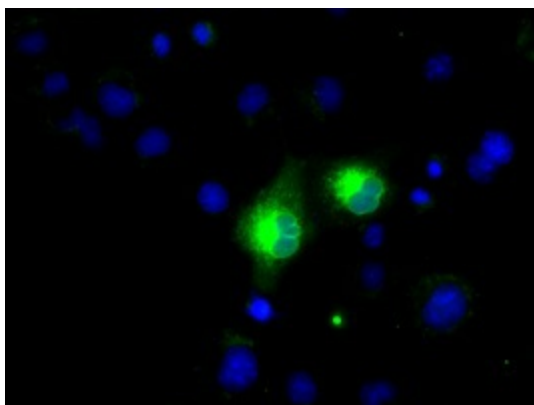
HPC13; IGBF; MSP; MSPB; PN44; PRPS; PSP; PSP-94; PSP57; PSP94

**Protein Families:**

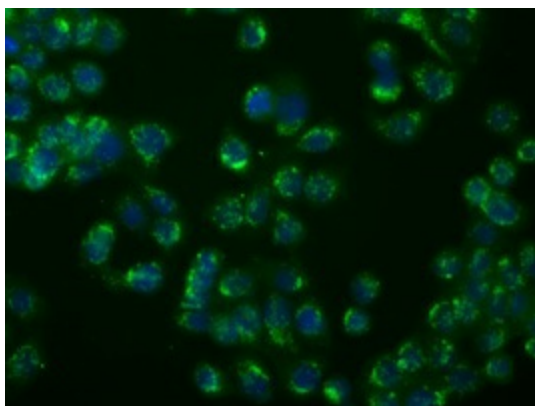
Secreted Protein, Transmembrane

**Product images:**

HEK293T cells were transfected with the pCMV6-ENTRY control (Cat# [PS100001], Left lane) or pCMV6-ENTRY MSMB (Cat# [RC202704], Right lane) cDNA for 48 hrs and lysed. Equivalent amounts of cell lysates (5 ug per lane) were separated by SDS-PAGE and immunoblotted with anti-MSMB (Cat# [TA501072]). Positive lysates [LY400872] (100ug) and [LC400872] (20ug) can be purchased separately from OriGene.



Anti-MSMB mouse monoclonal antibody ([TA501072]) immunofluorescent staining of COS7 cells transiently transfected by pCMV6-ENTRY MSMB ([RC202704]).



Immunofluorescent staining of HeLa cells using anti-mouse monoclonal antibody ().