

Product datasheet for **CF501070**

PIM2 Mouse Monoclonal Antibody [Clone ID: OTI8H10]

Product data:

Product Type:	Primary Antibodies
Clone Name:	OTI8H10
Applications:	FC, IF, IHC, IP, WB
Recommended Dilution:	WB 1:2000, IHC 1:50, IF 1:100, Flow 1:100, IP: 4ug/mL
Reactivity:	Human, Mouse, Rat
Host:	Mouse
Isotype:	IgG3
Clonality:	Monoclonal
Immunogen:	Full length human recombinant protein of human PIM2 (NP_006866) produced in HEK293T cell.
Formulation:	Lyophilized powder (original buffer 1X PBS, pH 7.3, 8% trehalose)
Reconstitution Method:	For reconstitution, we recommend adding 100uL distilled water to a final antibody concentration of about 1 mg/mL. To use this carrier-free antibody for conjugation experiment, we strongly recommend performing another round of desalting process. (OriGene recommends Zeba Spin Desalting Columns, 7KMWCO from Thermo Scientific)
Purification:	Purified from mouse ascites fluids or tissue culture supernatant by affinity chromatography (protein A/G)
Conjugation:	Unconjugated
Storage:	Store at -20°C as received.
Stability:	Stable for 12 months from date of receipt.
Predicted Protein Size:	34 kDa
Gene Name:	Pim-2 proto-oncogene, serine/threonine kinase
Database Link:	NP_006866 Entrez Gene 18715 Mouse Entrez Gene 317366 Rat Entrez Gene 11040 Human Q9P1W9
Background:	This gene encodes a protooncogene that acts as a serine/threonine protein kinase. Studies determined the encoded protein functions to prevent apoptosis and to promote cell survival.

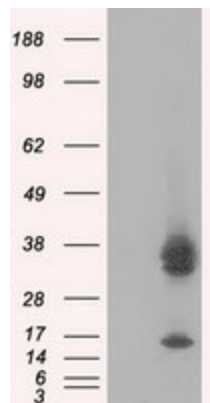


[View online »](#)

Protein Families: Druggable Genome, Protein Kinase

Protein Pathways: Acute myeloid leukemia

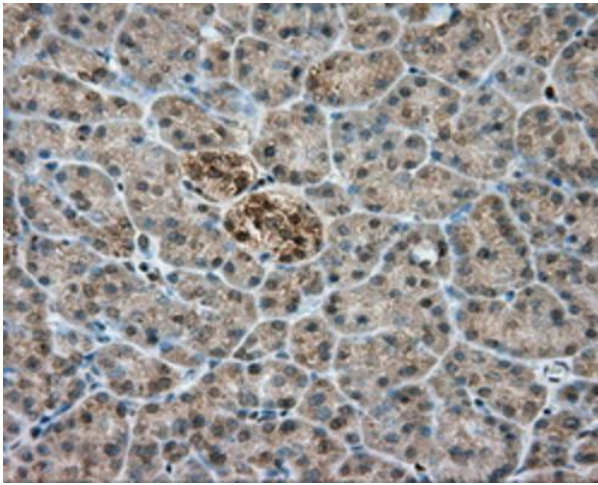
Product images:



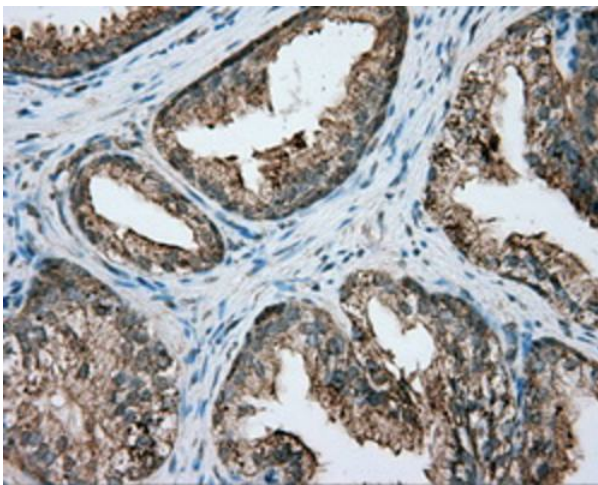
HEK293T cells were transfected with the pCMV6-ENTRY control (Left lane) or pCMV6-ENTRY PIM2 ([RC201933], Right lane) cDNA for 48 hrs and lysed. Equivalent amounts of cell lysates (5 ug per lane) were separated by SDS-PAGE and immunoblotted with anti-PIM2. Positive lysates [LY416355] (100ug) and [LC416355] (20ug) can be purchased separately from OriGene.



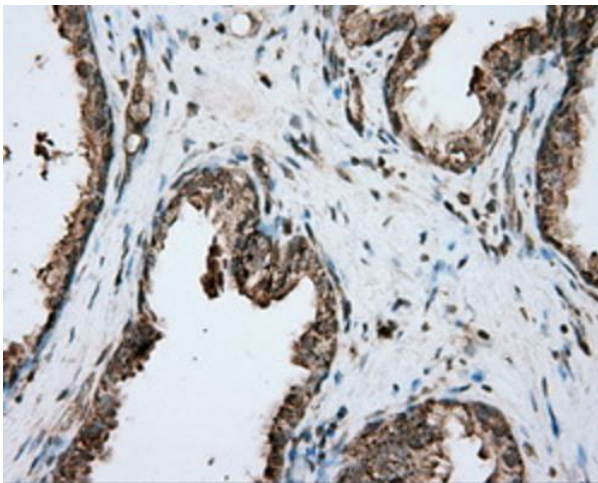
Immunohistochemical staining of paraffin-embedded colon tissue within the normal limits using anti-PIM2 mouse monoclonal antibody. (Heat-induced epitope retrieval by 10mM citric buffer, pH6.0, 100°C for 10min, [TA501070], Dilution 1:50)



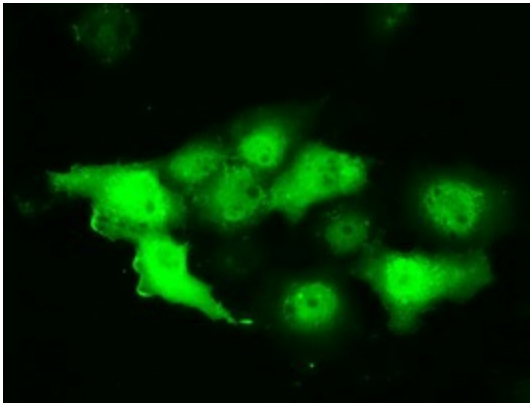
Immunohistochemical staining of paraffin-embedded pancreas tissue within the normal limits using anti-PIM2 mouse monoclonal antibody. (Heat-induced epitope retrieval by 10mM citric buffer, pH6.0, 100°C for 10min, [TA501070], Dilution 1:50)



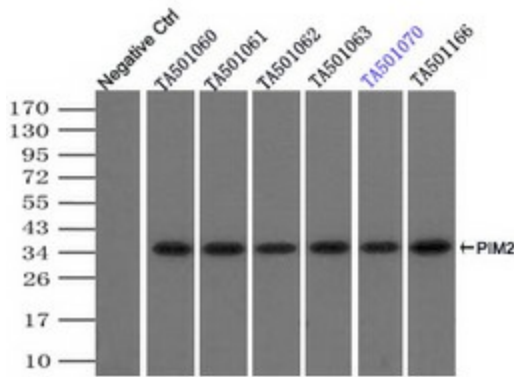
Immunohistochemical staining of paraffin-embedded prostate tissue within the normal limits using anti-PIM2 mouse monoclonal antibody. (Heat-induced epitope retrieval by 10mM citric buffer, pH6.0, 100°C for 10min, [TA501070], Dilution 1:50)



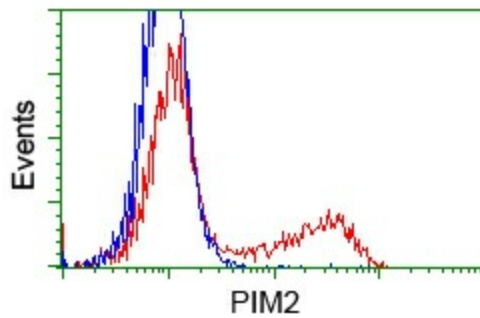
Immunohistochemical staining of paraffin-embedded Carcinoma of prostate tissue using anti-PIM2 mouse monoclonal antibody. (Heat-induced epitope retrieval by 10mM citric buffer, pH6.0, 100°C for 10min, [TA501070], Dilution 1:50)



Anti-PIM2 mouse monoclonal antibody ([TA501070]) immunofluorescent staining of COS7 cells transiently transfected by pCMV6-ENTRY PIM2 ([RC201933]).



Immunoprecipitation (IP) of PIM2 by using TrueMab monoclonal anti-PIM2 antibodies (Negative control: IP without adding anti-PIM2 antibody.). For each experiment, 500ul of DDK tagged PIM2 overexpression lysates (at 1:5 dilution with HEK293T lysate), 2ug of



HEK293T cells transfected with either pCMV6-ENTRY PIM2 ([RC201933]) (Red) or empty vector control plasmid (Blue) were immunostained with anti-PIM2 mouse monoclonal ([TA501070]), and then analyzed by flow cytometry.