

Product datasheet for **CF501065**

MTRF1L Mouse Monoclonal Antibody [Clone ID: OTI1F11]

Product data:

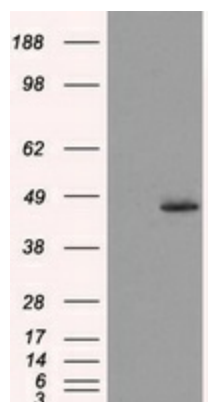
Product Type:	Primary Antibodies
Clone Name:	OTI1F11
Applications:	IF, WB
Recommended Dilution:	WB 1:1000, IF 1:100
Reactivity:	Human
Host:	Mouse
Isotype:	IgG1
Clonality:	Monoclonal
Immunogen:	Full length human recombinant protein of human MTRF1L (NP_061914) produced in HEK293T cell.
Formulation:	Lyophilized powder (original buffer 1X PBS, pH 7.3, 8% trehalose)
Reconstitution Method:	For reconstitution, we recommend adding 100uL distilled water to a final antibody concentration of about 1 mg/mL. To use this carrier-free antibody for conjugation experiment, we strongly recommend performing another round of desalting process. (OriGene recommends Zeba Spin Desalting Columns, 7KMWCO from Thermo Scientific)
Purification:	Purified from mouse ascites fluids or tissue culture supernatant by affinity chromatography (protein A/G)
Conjugation:	Unconjugated
Storage:	Store at -20°C as received.
Stability:	Stable for 12 months from date of receipt.
Predicted Protein Size:	43.6 kDa
Gene Name:	mitochondrial translation release factor 1 like
Database Link:	NP_061914 Entrez Gene 54516 Human Q9UGC7
Background:	Mitochondrial peptide chain release factor that directs the termination of translation in response to the peptide chain termination codons UAA and UAG



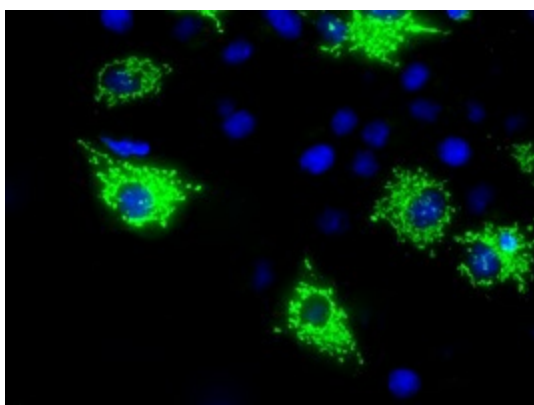
[View online »](#)

Synonyms: HMRF1L; MRF1L; mtRF1a

Product images:



HEK293T cells were transfected with the pCMV6-ENTRY control (Left lane) or pCMV6-ENTRY MTRF1L ([RC204221], Right lane) cDNA for 48 hrs and lysed. Equivalent amounts of cell lysates (5 ug per lane) were separated by SDS-PAGE and immunoblotted with anti-MTRF1L. Positive lysates [LY402734] (100ug) and [LC402734] (20ug) can be purchased separately from OriGene.



Anti-MTRF1L mouse monoclonal antibody ([TA501065]) immunofluorescent staining of COS7 cells transiently transfected by pCMV6-ENTRY MTRF1L ([RC204221]).