

## Product datasheet for **CF501053**

### **RDH11 Mouse Monoclonal Antibody [Clone ID: OTI1B4]**

#### **Product data:**

<b>Product Type:</b>	Primary Antibodies
<b>Clone Name:</b>	OTI1B4
<b>Applications:</b>	FC, IF, IHC, WB
<b>Recommended Dilution:</b>	WB 1:2000, IHC 1:50, IF 1:100, Flow 1:100
<b>Reactivity:</b>	Human, Mouse
<b>Host:</b>	Mouse
<b>Isotype:</b>	IgG2a
<b>Clonality:</b>	Monoclonal
<b>Immunogen:</b>	Full length human recombinant protein of human RDH11(NP_057110) produced in HEK293T cell.
<b>Formulation:</b>	Lyophilized powder (original buffer 1X PBS, pH 7.3, 8% trehalose)
<b>Reconstitution Method:</b>	For reconstitution, we recommend adding 100uL distilled water to a final antibody concentration of about 1 mg/mL. To use this carrier-free antibody for conjugation experiment, we strongly recommend performing another round of desalting process. (OriGene recommends Zeba Spin Desalting Columns, 7KMWCO from Thermo Scientific)
<b>Purification:</b>	Purified from mouse ascites fluids or tissue culture supernatant by affinity chromatography (protein A/G)
<b>Conjugation:</b>	Unconjugated
<b>Storage:</b>	Store at -20°C as received.
<b>Stability:</b>	Stable for 12 months from date of receipt.
<b>Predicted Protein Size:</b>	35.2 kDa
<b>Gene Name:</b>	retinol dehydrogenase 11
<b>Database Link:</b>	<a href="#">NP_057110</a> <a href="#">Entrez Gene 17252 Mouse</a> <a href="#">Entrez Gene 51109 Human</a> <a href="#">Q8TC12</a>
<b>Background:</b>	RHD11, a member of the short-chain dehydrogenase/reductase (SDR) superfamily of oxidoreductases, is expressed at high levels in prostate epithelium, and its expression is regulated by androgens. [supplied by OMIM]. COMPLETENESS: complete on the 3' end.



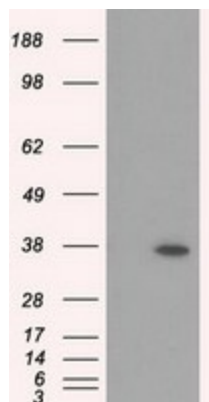
[View online »](#)

**Synonyms:** ARSDR1; CGI82; HCBP12; MDT1; PSDR1; RALR1; RDJCSS; SCALD; SDR7C1

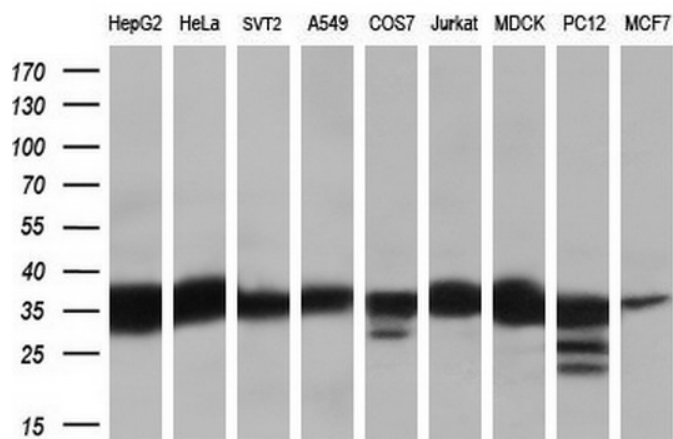
**Protein Families:** Druggable Genome

**Protein Pathways:** Metabolic pathways, Retinol metabolism

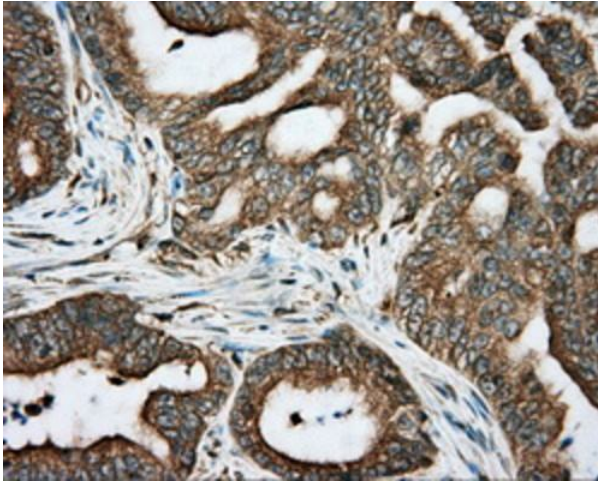
**Product images:**



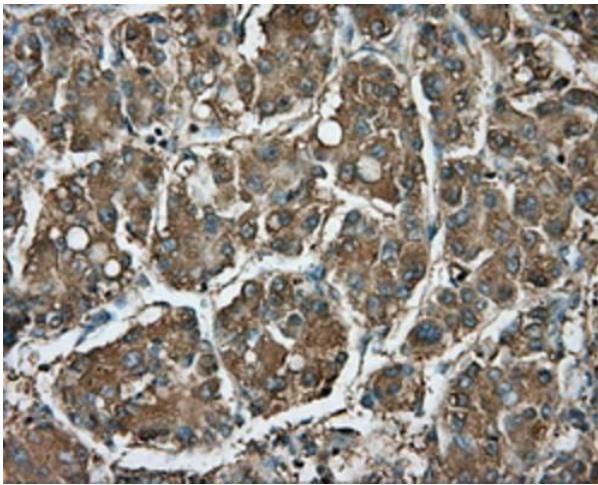
HEK293T cells were transfected with the pCMV6-ENTRY control (Cat# [PS100001], Left lane) or pCMV6-ENTRY RDH11 (Cat# [RC205003], Right lane) cDNA for 48 hrs and lysed. Equivalent amounts of cell lysates (5 ug per lane) were separated by SDS-PAGE and immunoblotted with anti-RDH11(Cat# [TA501053]). Positive lysates [LY402488] (100ug) and [LC402488] (20ug) can be purchased separately from OriGene.



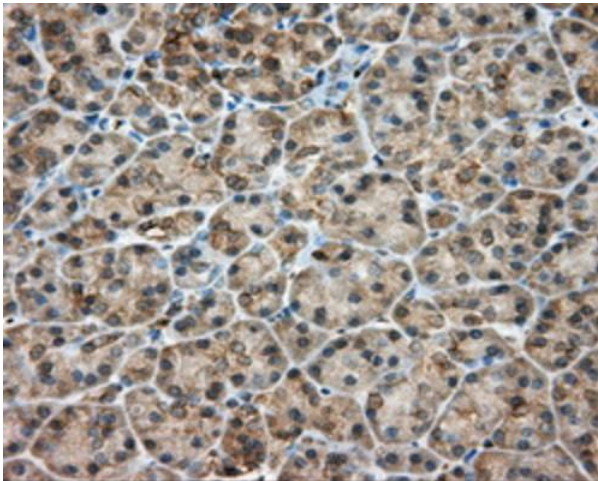
Western blot analysis of extracts (35ug) from 9 different cell lines by using anti-RDH11 monoclonal antibody (HepG2: human; HeLa: human; SVT2: mouse; A549: human; COS7: monkey; Jurkat: human; MDCK: canine; PC12: rat; MCF7: human) (1:200).



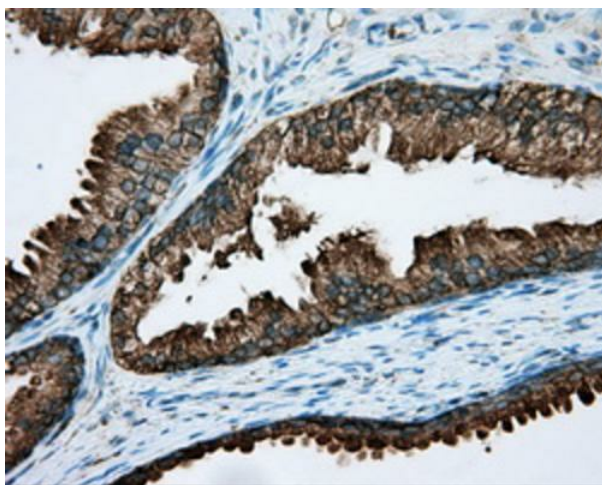
Immunohistochemical staining of paraffin-embedded Adenocarcinoma of colon tissue using anti-RDH11 mouse monoclonal antibody. Heat-induced epitope retrieval by EDTA solution buffer pH 8.0 at 120°C for 3 min.



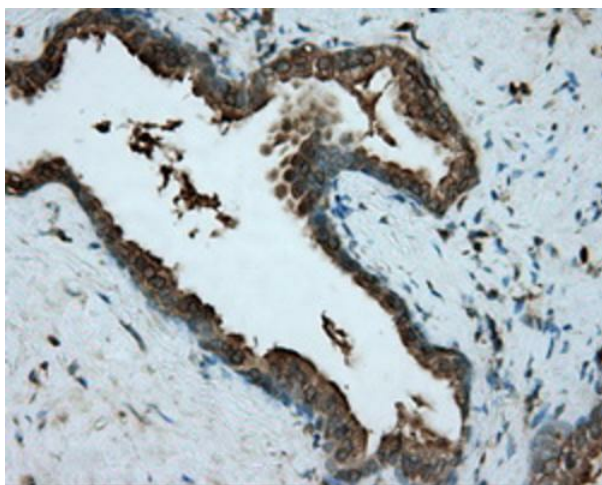
Immunohistochemical staining of paraffin-embedded Carcinoma of liver tissue using anti-RDH11 mouse monoclonal antibody. Heat-induced epitope retrieval by EDTA solution buffer pH 8.0 at 120°C for 3 min.



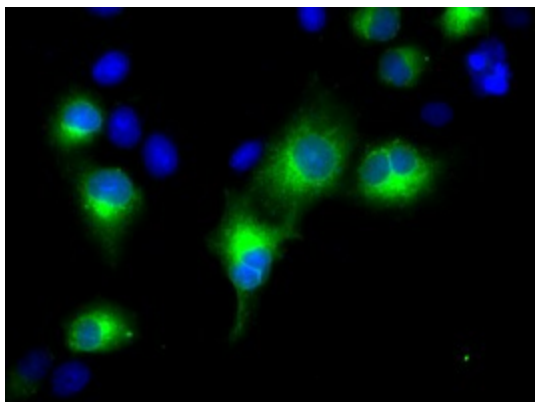
Immunohistochemical staining of paraffin-embedded pancreas tissue within the normal limits using anti-RDH11 mouse monoclonal antibody. Heat-induced epitope retrieval by EDTA solution buffer pH 8.0 at 120°C for 3 min.



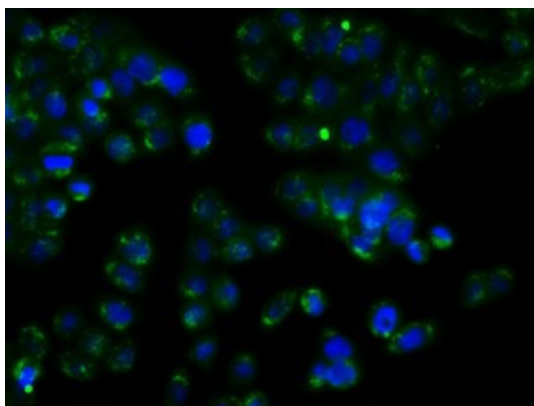
Immunohistochemical staining of paraffin-embedded prostate tissue within the normal limits using anti-RDH11 mouse monoclonal antibody. Heat-induced epitope retrieval by EDTA solution buffer pH 8.0 at 120°C for 3 min.



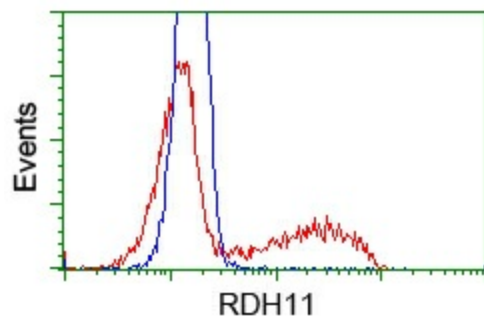
Immunohistochemical staining of paraffin-embedded Carcinoma of prostate tissue using anti-RDH11 mouse monoclonal antibody. Heat-induced epitope retrieval by EDTA solution buffer pH 8.0 at 120°C for 3 min.



Anti-RDH11 mouse monoclonal antibody (TA501053) immunofluorescent staining of COS7 cells transiently transfected by pCMV6-ENTRY RDH11 (RC205003).



Immunofluorescent staining of HT29 cells using anti-RDH11 mouse monoclonal antibody ([TA501053]).



HEK293T cells transfected with either pCMV6-ENTRY RDH11 ([RC205003]) (Red) or empty vector control plasmid (Blue) were immunostained with anti-RDH11 mouse monoclonal ([TA501053]), and then analyzed by flow cytometry.