

Product datasheet for **CF501035**

KCTD5 Mouse Monoclonal Antibody [Clone ID: OTI3C8]

Product data:

Product Type:	Primary Antibodies
Clone Name:	OTI3C8
Applications:	FC, IF, IHC, WB
Recommended Dilution:	IHC 1:100~400, WB: 1:200
Reactivity:	Human, Mouse, Rat
Host:	Mouse
Isotype:	IgG2b
Clonality:	Monoclonal
Immunogen:	Full length human recombinant protein of human KCTD5 (NP_061865) produced in HEK293T cell.
Formulation:	Lyophilized powder (original buffer 1X PBS, pH 7.3, 8% trehalose)
Reconstitution Method:	For reconstitution, we recommend adding 100uL distilled water to a final antibody concentration of about 1 mg/mL. To use this carrier-free antibody for conjugation experiment, we strongly recommend performing another round of desalting process. (OriGene recommends Zeba Spin Desalting Columns, 7KMWCO from Thermo Scientific)
Purification:	Purified from mouse ascites fluids or tissue culture supernatant by affinity chromatography (protein A/G)
Conjugation:	Unconjugated
Storage:	Store at -20°C as received.
Stability:	Stable for 12 months from date of receipt.
Predicted Protein Size:	26.1 kDa
Gene Name:	potassium channel tetramerization domain containing 5
Database Link:	NP_061865 Entrez Gene 54442 Human Q9NXV2
Background:	Its interaction with CUL3 suggests that it may act as a substrate adapter in some E3 ligase complex. Does not affect the function of Kv channel Kv2.1/KCNB1, Kv1.2/KCNA2, Kv4.2/KCND2 and Kv3.4/KCNC4

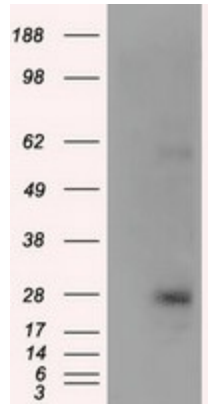


[View online »](#)

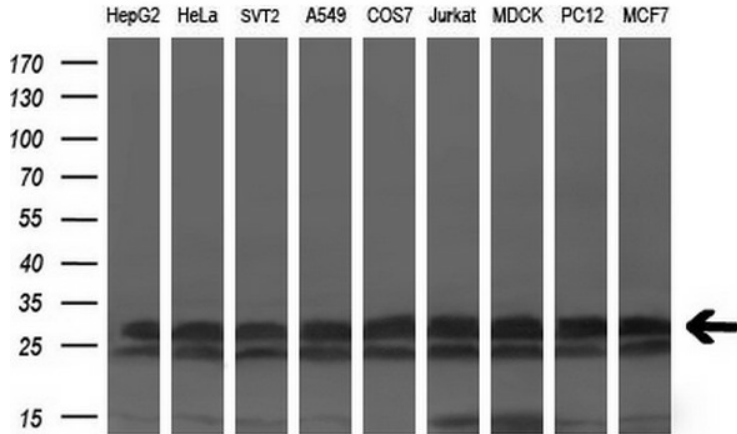
Synonyms: FLJ20040

Protein Families: Ion Channels: Other

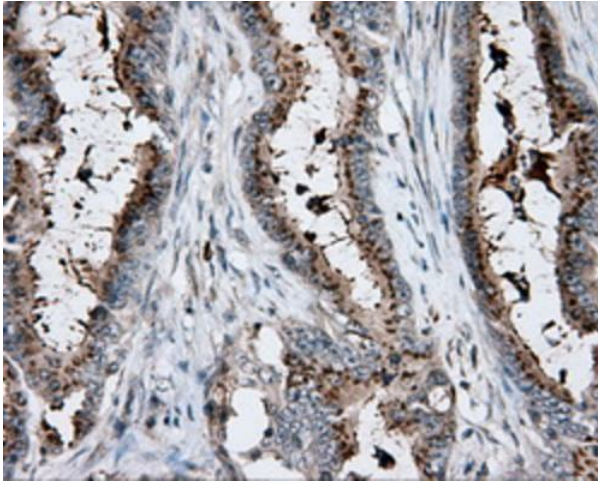
Product images:



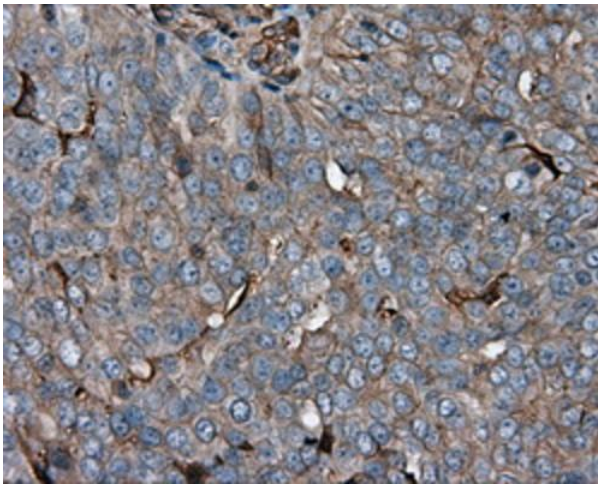
HEK293T cells were transfected with the pCMV6-ENTRY control (Cat# [PS100001], Left lane) or pCMV6-ENTRY KCTD5 (Cat# [RC200180], Right lane) cDNA for 48 hrs and lysed. Equivalent amounts of cell lysates (5 ug per lane) were separated by SDS-PAGE and immunoblotted with anti-KCTD5(Cat# [TA501035]). Positive lysates [LY412830] (100ug) and [LC412830] (20ug) can be purchased separately from OriGene.



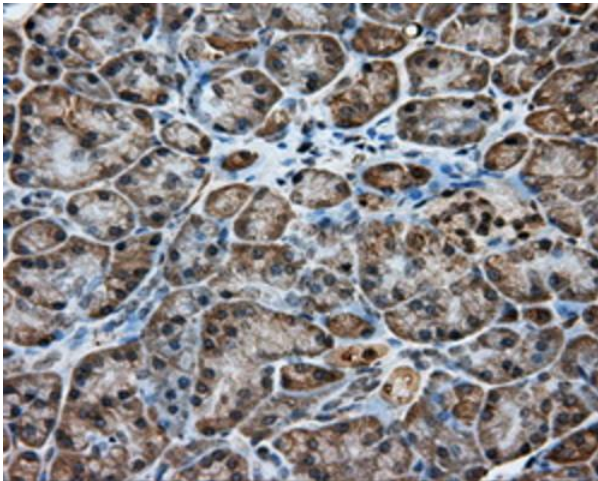
Western blot analysis of extracts (35ug) from 9 different cell lines by using anti-KCTD5 monoclonal antibody (HepG2: human; HeLa: human; SVT2: mouse; A549: human; COS7: monkey; Jurkat: human; MDCK: canine; PC12: rat; MCF7: human) (1:200).



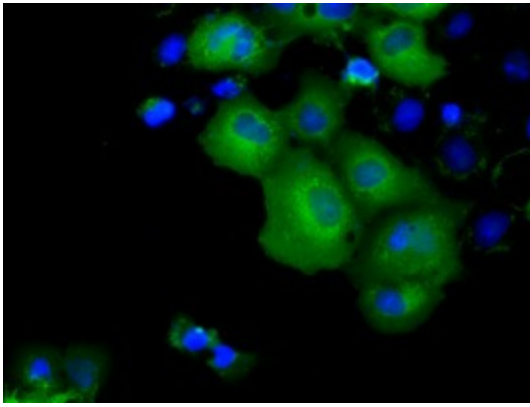
Immunohistochemical staining of paraffin-embedded Adenocarcinoma of colon tissue using anti-KCTD5 mouse monoclonal antibody. (Heat-induced epitope retrieval by 10mM citric buffer, pH6.0, 100°C for 10min, [TA501035], Dilution 1:50)



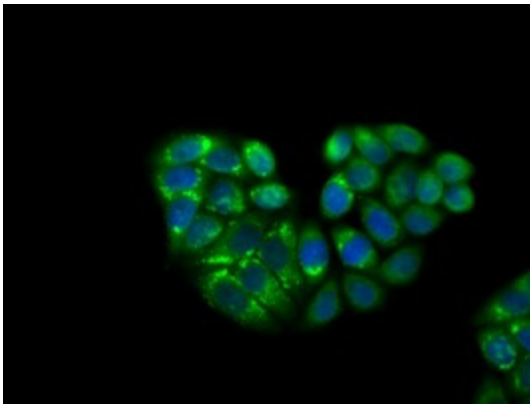
Immunohistochemical staining of paraffin-embedded Adenocarcinoma of ovary tissue using anti-KCTD5 mouse monoclonal antibody. (Heat-induced epitope retrieval by 10mM citric buffer, pH6.0, 100°C for 10min, [TA501035], Dilution 1:50)



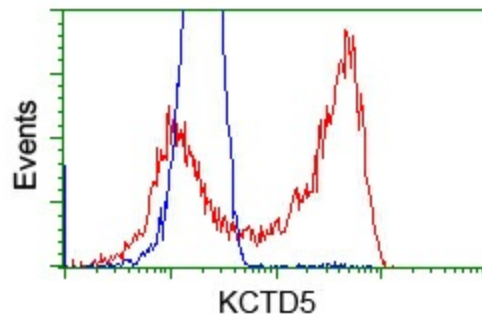
Immunohistochemical staining of paraffin-embedded pancreas tissue within the normal limits using anti-KCTD5 mouse monoclonal antibody. (Heat-induced epitope retrieval by 10mM citric buffer, pH6.0, 100°C for 10min, [TA501035], Dilution 1:50)



Anti-KCTD5 mouse monoclonal antibody ([TA501035]) immunofluorescent staining of COS7 cells transiently transfected by pCMV6-ENTRY KCTD5 ([RC200180]).



Immunofluorescent staining of HeLa cells using anti-KCTD5 mouse monoclonal antibody ([TA501035]).



HEK293T cells transfected with either pCMV6-ENTRY KCTD5 ([RC200180]) (Red) or empty vector control plasmid (Blue) were immunostained with anti-KCTD5 mouse monoclonal ([TA501035]), and then analyzed by flow cytometry.