

## Product datasheet for **CF501034**

### **NIT1 Mouse Monoclonal Antibody [Clone ID: OTI4D12]**

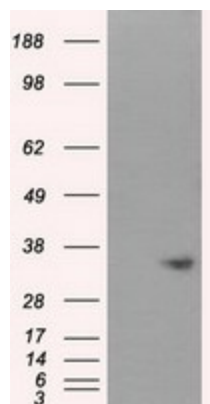
#### **Product data:**

<b>Product Type:</b>	Primary Antibodies
<b>Clone Name:</b>	OTI4D12
<b>Applications:</b>	FC, IF, IHC, WB
<b>Recommend Dilution:</b>	WB 1:1000, IHC 1:50, IF 1:100, Flow 1:100
<b>Reactivity:</b>	Human
<b>Host:</b>	Mouse
<b>Isotype:</b>	IgG1
<b>Clonality:</b>	Monoclonal
<b>Immunogen:</b>	Full length human recombinant protein of human NIT1 (NP_005591) produced in HEK293T cell.
<b>Formulation:</b>	PBS (pH7.3), 8% Trehalose
<b>Reconstitution Method:</b>	Reconstitute with PBS (pH7.3). To use this carrier-free antibody for conjugation experiment, we strongly recommend you to perform another round of desalting process. (OriGene recommends Zeba Spin Desalting Columns, 7KMWCO from Thermo Scientific)
<b>Purification:</b>	Purified from mouse ascites fluids by affinity chromatography
<b>Predicted Protein Size:</b>	35.7 kDa
<b>Gene Name:</b>	Homo sapiens nitrilase 1 (NIT1), transcript variant 1, mRNA.
<b>Database Link:</b>	<a href="#">NP_005591 Entrez Gene 4817 Human</a>
<b>Background:</b>	Play a role in cell growth and apoptosis: loss of expression promotes cell growth and resistance to DNA damage stress. Has tumor suppressor properties that enhances the apoptotic responsiveness in cancer cells; this effect is additive to the tumor suppressor activity of FHIT. It is also a negative regulator of primary T-cells. Has apparently no omega-amidase activity such as NIT2.
<b>Synonyms:</b>	MGC57670

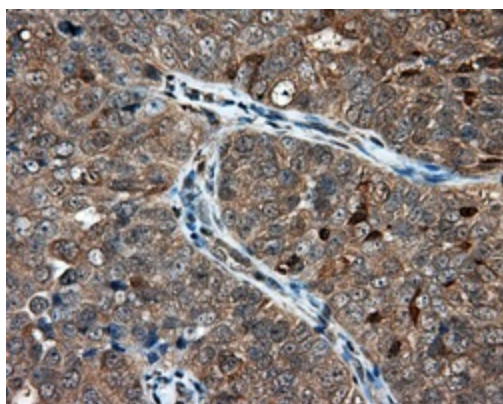


[View online »](#)

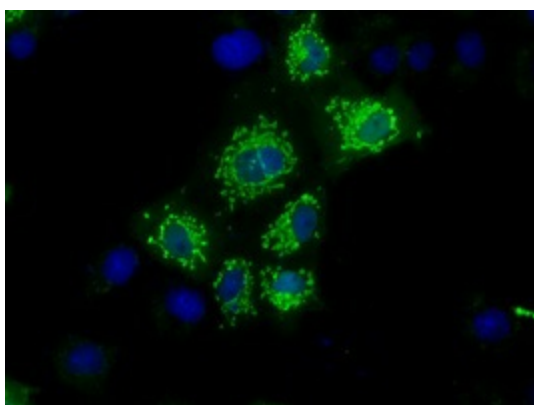
## Product images:



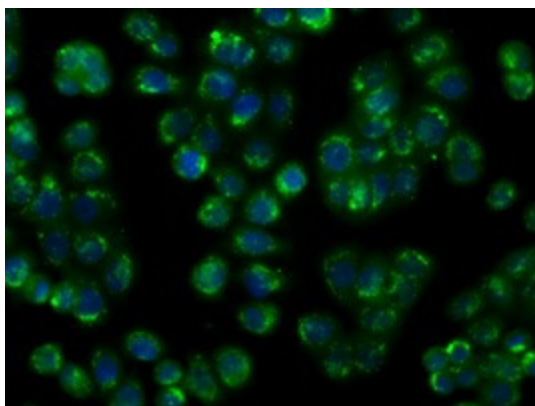
HEK293T cells were transfected with the pCMV6-ENTRY control (Left lane) or pCMV6-ENTRY NIT1 (RC211519, Right lane) cDNA for 48 hrs and lysed. Equivalent amounts of cell lysates (5 ug per lane) were separated by SDS-PAGE and immunoblotted with anti-NIT1. Positive lysates LY401717 (100ug) and LC401717 (20ug) can be purchased separately from OriGene.



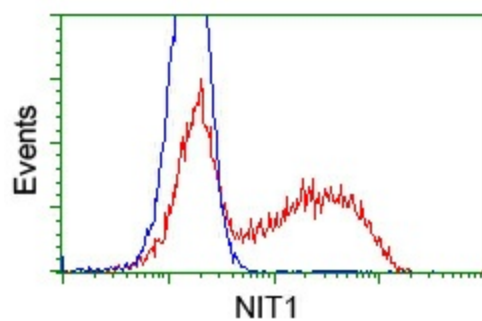
Immunohistochemical staining of paraffin-embedded Adenocarcinoma of ovary tissue using anti-NIT1 mouse monoclonal antibody. (Heat-induced epitope retrieval by 10mM citric buffer, pH6.0, 100°C for 10min, TA501034, Dilution 1:50)



Anti-NIT1 mouse monoclonal antibody (TA501034) immunofluorescent staining of COS7 cells transiently transfected by pCMV6-ENTRY NIT1 (RC211519).



Immunofluorescent staining of HT29 cells using anti-NIT1 mouse monoclonal antibody (TA501034).



HEK293T cells transfected with either pCMV6-ENTRY NIT1 (RC211519) (Red) or empty vector control plasmid (Blue) were immunostained with anti-NIT1 mouse monoclonal (TA501034), and then analyzed by flow cytometry.