

Product datasheet for **CF500970**

Amyloid Precursor Protein (APP) Mouse Monoclonal Antibody [Clone ID: OTI3D11]

Product data:

Product Type:	Primary Antibodies
Clone Name:	OTI3D11
Applications:	FC, IF, WB
Recommended Dilution:	WB 1:2000, IF 1:100, Flow 1:100
Reactivity:	Human, Mouse, Rat
Host:	Mouse
Isotype:	IgG1
Clonality:	Monoclonal
Immunogen:	Full length human recombinant protein of human APP (NP_000475) produced in HEK293T cell.
Formulation:	Lyophilized powder (original buffer 1X PBS, pH 7.3, 8% trehalose)
Reconstitution Method:	For reconstitution, we recommend adding 100uL distilled water to a final antibody concentration of about 1 mg/mL. To use this carrier-free antibody for conjugation experiment, we strongly recommend performing another round of desalting process. (OriGene recommends Zeba Spin Desalting Columns, 7KMWCO from Thermo Scientific)
Purification:	Purified from mouse ascites fluids or tissue culture supernatant by affinity chromatography (protein A/G)
Conjugation:	Unconjugated
Storage:	Store at -20°C as received.
Stability:	Stable for 12 months from date of receipt.
Predicted Protein Size:	87.0 kDa
Gene Name:	amyloid beta precursor protein
Database Link:	NP_000475 Entrez Gene 11820 Mouse Entrez Gene 54226 Rat Entrez Gene 351 Human P05067



[View online »](#)

Background:

This gene encodes a cell surface receptor and transmembrane precursor protein that is cleaved by secretases to form a number of peptides. Some of these peptides are secreted and can bind to the acetyltransferase complex APBB1/TIP60 to promote transcriptional activation, while others form the protein basis of the amyloid plaques found in the brains of patients with Alzheimer disease. Mutations in this gene have been implicated in autosomal dominant Alzheimer disease and cerebroarterial amyloidosis (cerebral amyloid angiopathy). Multiple transcript variants encoding several different isoforms have been found for this gene.

Synonyms:

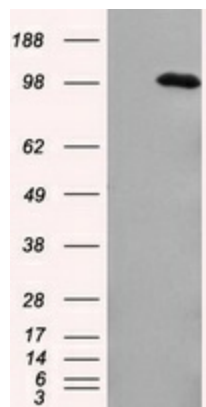
AAA; ABETA; ABPP; AD1; APPI; CTFgamma; CVAP; PN-II; PN2

Protein Families:

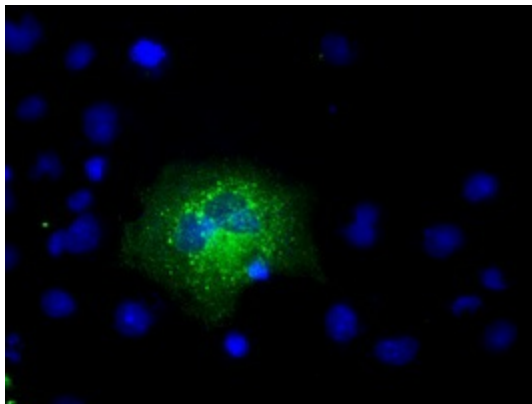
Druggable Genome, Transmembrane

Protein Pathways:

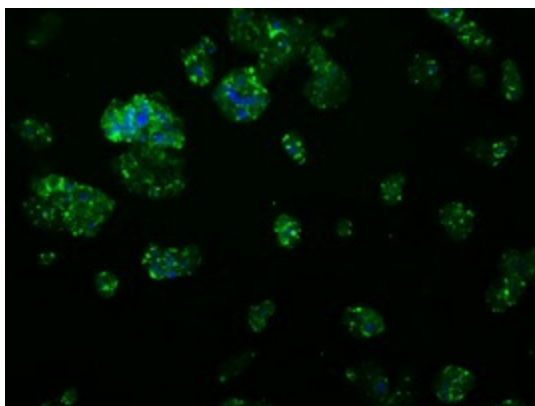
Alzheimer's disease

Product images:


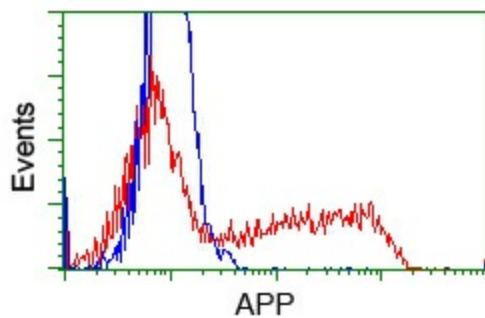
HEK293T cells were transfected with the pCMV6-ENTRY control (Left lane) or pCMV6-ENTRY APP ([RC221339], Right lane) cDNA for 48 hrs and lysed. Equivalent amounts of cell lysates (5 ug per lane) were separated by SDS-PAGE and immunoblotted with anti-APP. Positive lysates [LY424694] (100ug) and [LC424694] (20ug) can be purchased separately from OriGene.



Anti-APP mouse monoclonal antibody ([TA500970]) immunofluorescent staining of COS7 cells transiently transfected by pCMV6-ENTRY APP ([RC221339]).



Immunofluorescent staining of HepG2 cells using anti-APP mouse monoclonal antibody ([TA500970]).



HEK293T cells transfected with either pCMV6-ENTRY APP ([RC221339]) (Red) or empty vector control plasmid (Blue) were immunostained with anti-APP mouse monoclonal ([TA500970]), and then analyzed by flow cytometry.