

Product datasheet for **CF500950**

Annexin A11 (ANXA11) Mouse Monoclonal Antibody [Clone ID: OTI1C6]

Product data:

Product Type:	Primary Antibodies
Clone Name:	OTI1C6
Applications:	FC, IF, WB
Recommended Dilution:	IHC 1:100~200, WB: 1:200
Reactivity:	Human, Mouse, Rat
Host:	Mouse
Isotype:	IgG1
Clonality:	Monoclonal
Immunogen:	Full length human recombinant protein of human ANXA11 (NP_001148) produced in HEK293T cell.
Formulation:	Lyophilized powder (original buffer 1X PBS, pH 7.3, 8% trehalose)
Reconstitution Method:	For reconstitution, we recommend adding 100uL distilled water to a final antibody concentration of about 1 mg/mL. To use this carrier-free antibody for conjugation experiment, we strongly recommend performing another round of desalting process. (OriGene recommends Zeba Spin Desalting Columns, 7KMWCO from Thermo Scientific)
Purification:	Purified from mouse ascites fluids or tissue culture supernatant by affinity chromatography (protein A/G)
Conjugation:	Unconjugated
Storage:	Store at -20°C as received.
Stability:	Stable for 12 months from date of receipt.
Predicted Protein Size:	54.4 kDa
Gene Name:	annexin A11
Database Link:	NP_001148 Entrez Gene 11744 Mouse Entrez Gene 290527 Rat Entrez Gene 311 Human P50995



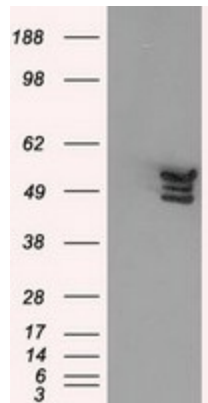
[View online »](#)

Background:

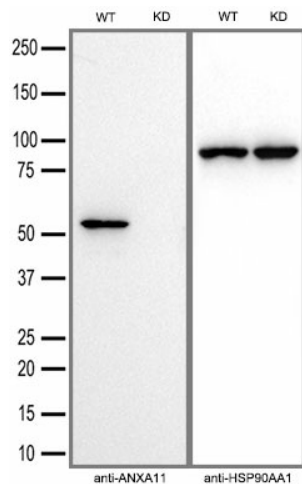
This gene encodes a member of the annexin family, a group of calcium-dependent phospholipid-binding proteins. Annexins have unique N-terminal domains and conserved C-terminal domains, which contain the calcium-dependent phospholipid-binding sites. The encoded protein is a 56-kD antigen recognized by sera from patients with various autoimmune diseases. Transcript variants encoding the same isoform have been identified.

Synonyms:

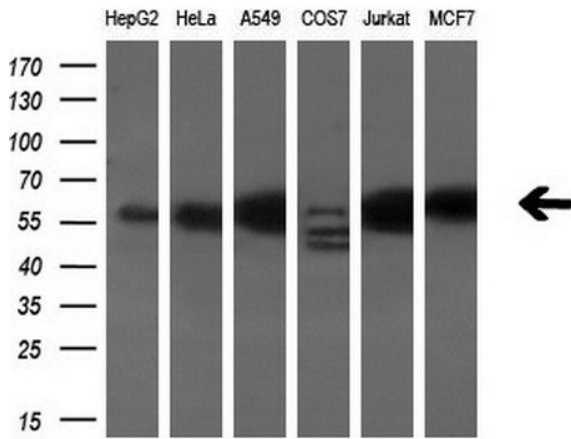
ANX11; CAP50

Product images:


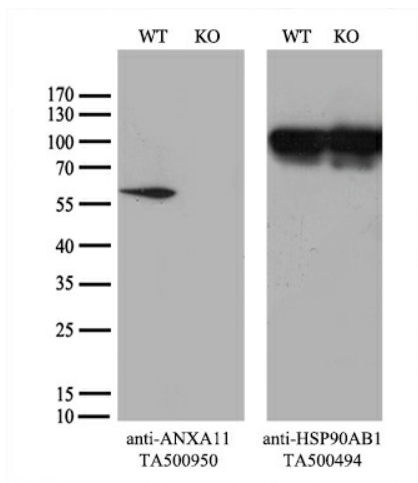
HEK293T cells were transfected with the pCMV6-ENTRY control (Cat# [PS100001], Left lane) or pCMV6-ENTRY ANXA11 (Cat# [RC212191], Right lane) cDNA for 48 hrs and lysed. Equivalent amounts of cell lysates (5 ug per lane) were separated by SDS-PAGE and immunoblotted with anti-ANXA11 (Cat# [TA500950]). Positive lysates [LY420097] (100ug) and [LC420097] (20ug) can be purchased separately from OriGene.



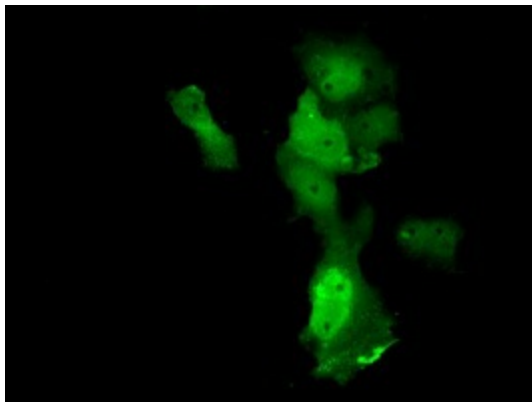
Equivalent amounts of cell lysates (30 ug per lane) of wild-type HeLa cells (WT) and ANXA11-Knockdown HeLa cells (KD) were separated by SDS-PAGE and immunoblotted with anti-ANXA11 monoclonal antibody [TA500950] (1:2500). Then the blotted membrane was stripped and reprobed with anti-HSP90AA1 antibody as a loading control.



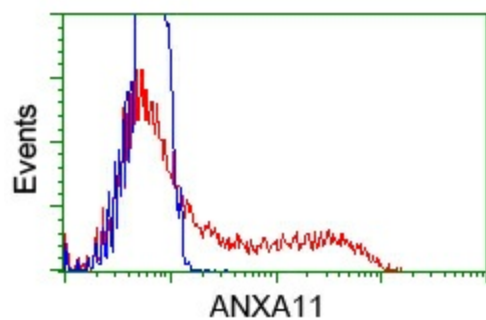
Western blot analysis of extracts (10ug) from 6 different cell lines by using anti-ANXA11 monoclonal antibody (1:200).



Equivalent amounts of cell lysates (10 ug per lane) of wild-type 293T cells (WT, Cat# LC810293T) and ANXA11-Knockout 293T cells (KO, Cat# [LC842105]) were separated by SDS-PAGE and immunoblotted with anti-ANXA11 monoclonal antibody [TA500950] (1:500). Then the blotted membrane was stripped and reprobed with anti-HSP90 antibody as a loading control.



Anti-ANXA11 mouse monoclonal antibody ([TA500950]) immunofluorescent staining of COS7 cells transiently transfected by pCMV6-ENTRY ANXA11 ([RC212191]).



HEK293T cells transfected with either pCMV6-ENTRY ANXA11 ([RC212191]) (Red) or empty vector control plasmid (Blue) were immunostained with anti-ANXA11 mouse monoclonal ([TA500950]), and then analyzed by flow cytometry.