

## Product datasheet for **CF500948**

### IFIT1 Mouse Monoclonal Antibody [Clone ID: OTI3G8]

#### Product data:

Product Type:	Primary Antibodies
Clone Name:	OTI3G8
Applications:	FC, IF, IHC, WB
Recommended Dilution:	WB 1:500~1000, IHC 1:50, IF 1:50~100, FLOW 1:100
Reactivity:	Human, Mouse, Rat
Host:	Mouse
Isotype:	IgG2a
Clonality:	Monoclonal
Immunogen:	Full length human recombinant protein of human IFIT1 (NP_000899) produced in HEK293T cell.
Formulation:	Lyophilized powder (original buffer 1X PBS, pH 7.3, 8% trehalose)
Reconstitution Method:	For reconstitution, we recommend adding 100uL distilled water to a final antibody concentration of about 1 mg/mL. To use this carrier-free antibody for conjugation experiment, we strongly recommend performing another round of desalting process. (OriGene recommends Zeba Spin Desalting Columns, 7KMWCO from Thermo Scientific)
Purification:	Purified from mouse ascites fluids or tissue culture supernatant by affinity chromatography (protein A/G)
Conjugation:	Unconjugated
Storage:	Store at -20°C as received.
Stability:	Stable for 12 months from date of receipt.
Predicted Protein Size:	55.2 kDa
Gene Name:	interferon induced protein with tetratricopeptide repeats 1
Database Link:	<a href="#">NP_001539</a> <a href="#">Entrez Gene 15957 Mouse</a> <a href="#">Entrez Gene 56824 Rat</a> <a href="#">Entrez Gene 3434 Human</a> <a href="#">P09914</a>
Synonyms:	C56; G10P1; IFI-56; IFI-56K; IFI56; IFIT-1; IFNAI1; ISG56; P56; RNM561



[View online »](#)

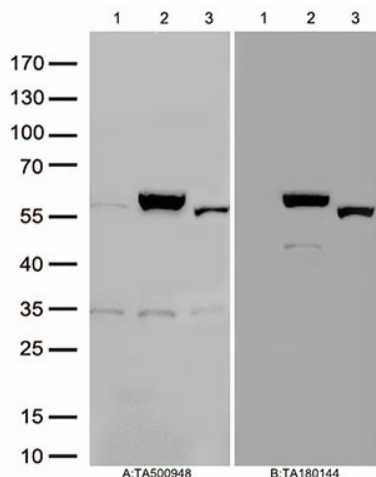
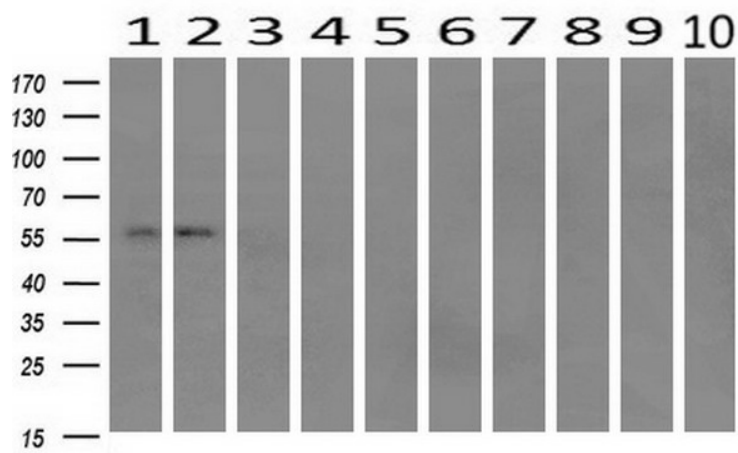
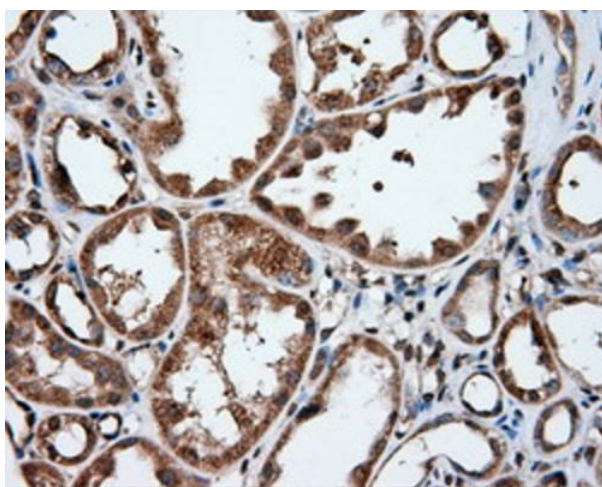
**Product images:**


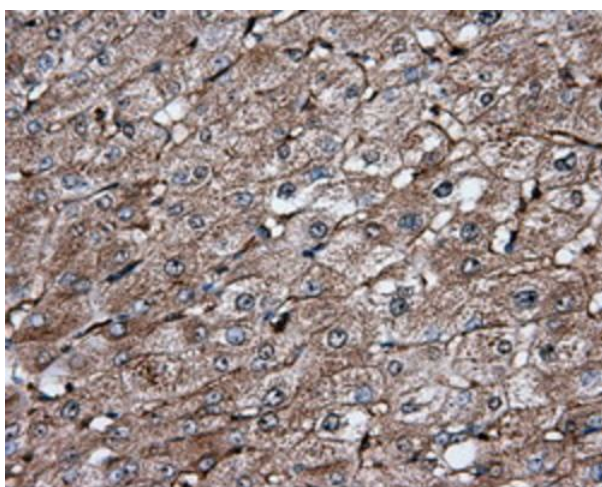
Figure A, Western blot analysis of overexpressed lysates(25ug per lane) from HEK293T cells transfected with empty plasmid ([PS100001], lane 1) , human IFIT1 plasmid ([RC203320], lane 2), mouse IFIT1 plasmid ([MR207393], lane 3) using anti-IFIT1 antibody [TA500948] (1:500). Figure B, Western blot analysis of the same samples as figure A with anti-DDK antibody ([TA180144], 1:1000)



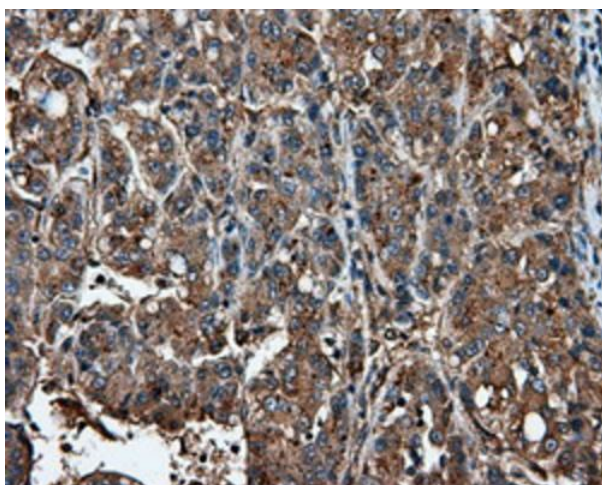
Western blot analysis of extracts (10ug) from 10 Human tissue by using anti-IFIT1 monoclonal antibody at 1:200 (1: Testis; 2: Omentum; 3: Uterus; 4: Breast; 5: Brain; 6: Liver; 7: Ovary; 8: Thyroid gland; 9: colon; 10: spleen).



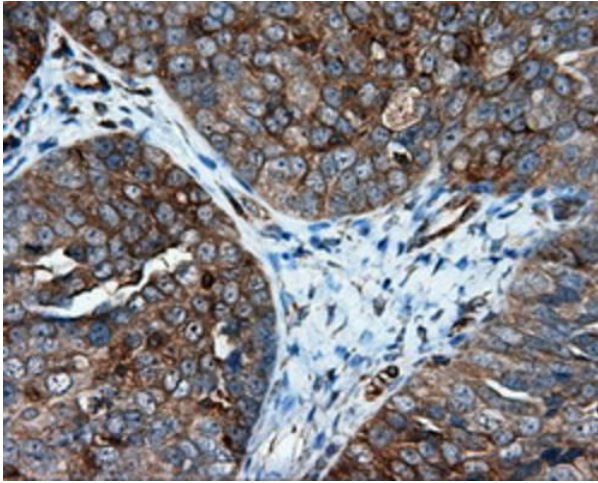
Immunohistochemical staining of paraffin-embedded Human Kidney tissue within the normal limits using anti-IFIT1 mouse monoclonal antibody. Heat-induced epitope retrieval by EDTA solution buffer pH 8.0 at 120°C for 3 min.



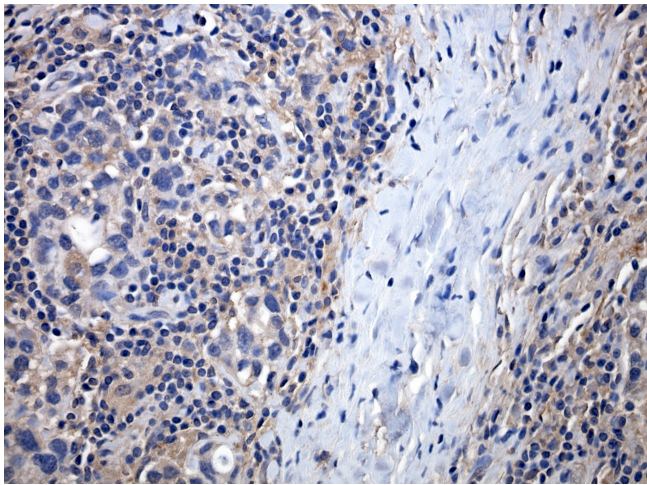
Immunohistochemical staining of paraffin-embedded Human liver tissue within the normal limits using anti-IFIT1 mouse monoclonal antibody. Heat-induced epitope retrieval by EDTA solution buffer pH 8.0 at 120°C for 3 min.



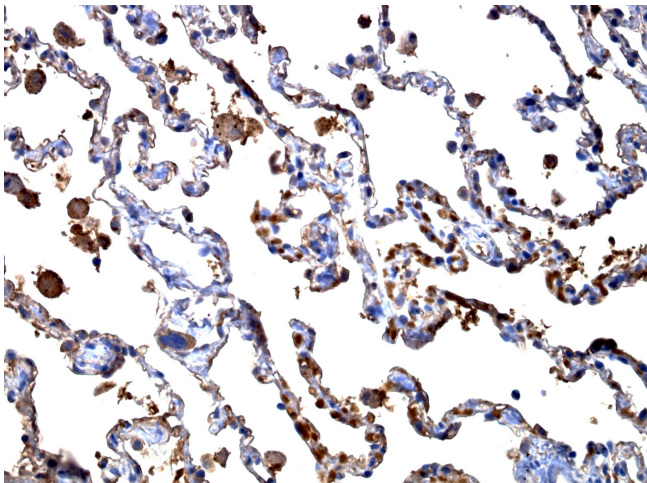
Immunohistochemical staining of paraffin-embedded Carcinoma of Human liver tissue using anti-IFIT1 mouse monoclonal antibody. Heat-induced epitope retrieval by EDTA solution buffer pH 8.0 at 120°C for 3 min.



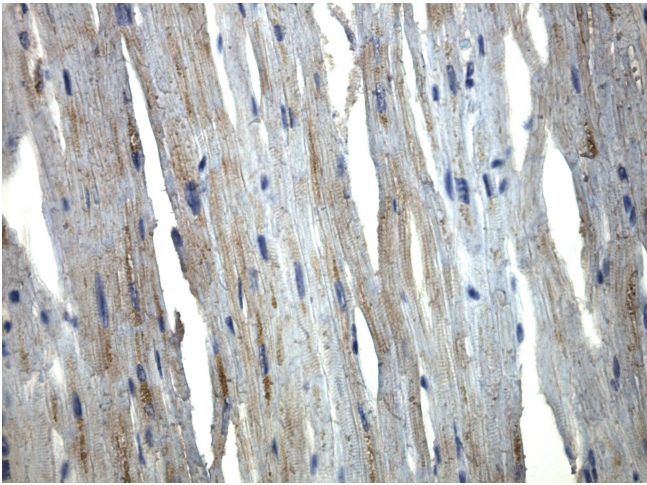
Immunohistochemical staining of paraffin-embedded Adenocarcinoma of Human ovary tissue using anti-IFIT1 mouse monoclonal antibody. Heat-induced epitope retrieval by EDTA solution buffer pH 8.0 at 120°C for 3 min.



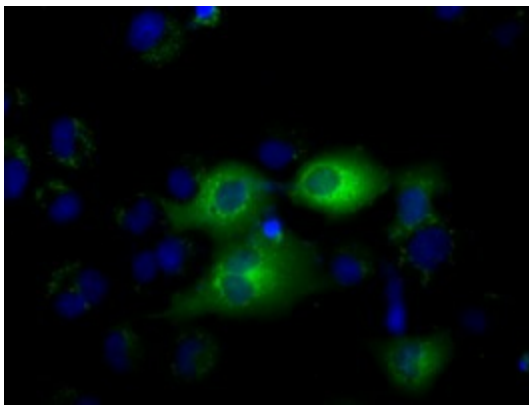
Immunohistochemical staining of paraffin-embedded breast cancer using IFIT antibody [TA500948] clone OTI3G8 mouse monoclonal antibody. Protocol used HIER TEE pH9.0 (cat# [B21-100]) and anti-IFIT at 1:800 dilution. Detection was done with Polink1 Broad Mouse and Rabbit C/N [D11-18] with DAB Kit. Image 40x magnification.



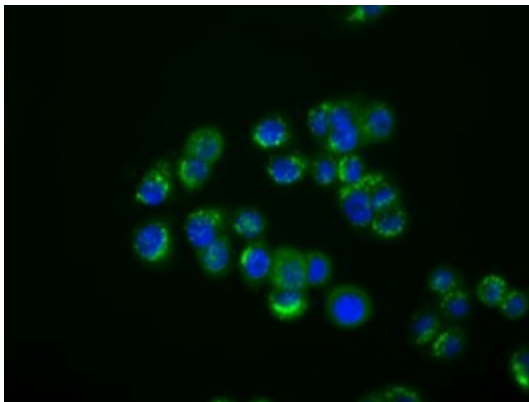
Immunohistochemical staining of paraffin-embedded lung using IFIT antibody [TA500948] clone OTI3G8 mouse monoclonal antibody. Protocol used HIER TEE pH9.0 (cat# [B21-100]) and anti-IFIT at 1:800 dilution. Detection was done with Polink1 Broad Mouse and Rabbit C/N [D11-18] with DAB Kit. Image 40x magnification.



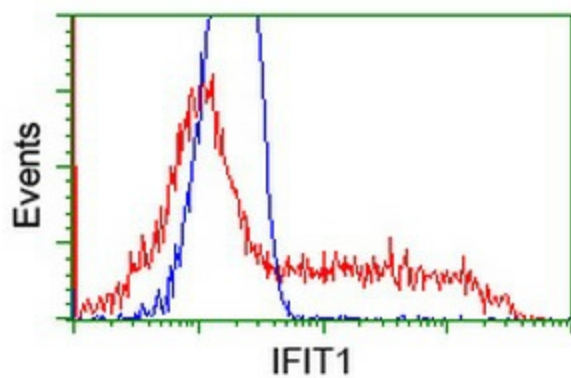
Immunohistochemical staining of paraffin-embedded heart using IFIT antibody [TA500948] clone OTI3G8 mouse monoclonal antibody. Protocol used HIER TEE pH9.0 (cat# [B21-100]) and anti-IFIT at 1:800 dilution. Detection was done with Polink1 Broad Mouse and Rabbit C/N [D11-18] with DAB Kit. Image 40x magnification.



Anti-IFIT1 mouse monoclonal antibody ([TA500948]) immunofluorescent staining of COS7 cells transiently transfected by pCMV6-ENTRY IFIT1 ([RC203320]).



Immunofluorescent staining of HT29 cells using anti-IFIT1 mouse monoclonal antibody ([TA500948]).



HEK293T cells transfected with either [RC203320] overexpress plasmid (Red) or empty vector control plasmid (Blue) were immunostained by anti-IFIT1 antibody ([TA500948]), and then analyzed by flow cytometry.