

Product datasheet for **CF500942**

Serine racemase (SRR) Mouse Monoclonal Antibody [Clone ID: OTI1D7]

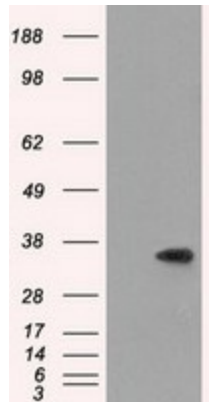
Product data:

Product Type:	Primary Antibodies
Clone Name:	OTI1D7
Applications:	FC, IHC, WB
Recommended Dilution:	WB 1:2000, IHC 1:50, Flow 1:100
Reactivity:	Human, Mouse, Rat
Host:	Mouse
Isotype:	IgG2a
Clonality:	Monoclonal
Immunogen:	Full length human recombinant protein of human SRR(NP_068766) produced in HEK293T cell.
Formulation:	Lyophilized powder (original buffer 1X PBS, pH 7.3, 8% trehalose)
Reconstitution Method:	For reconstitution, we recommend adding 100uL distilled water to a final antibody concentration of about 1 mg/mL. To use this carrier-free antibody for conjugation experiment, we strongly recommend performing another round of desalting process. (OriGene recommends Zeba Spin Desalting Columns, 7KMWCO from Thermo Scientific)
Purification:	Purified from mouse ascites fluids or tissue culture supernatant by affinity chromatography (protein A/G)
Conjugation:	Unconjugated
Storage:	Store at -20°C as received.
Stability:	Stable for 12 months from date of receipt.
Predicted Protein Size:	36.6 kDa
Gene Name:	serine racemase
Database Link:	NP_068766 Entrez Gene 27364 MouseEntrez Gene 303306 RatEntrez Gene 63826 Human Q9GZT4
Background:	Catalyzes the synthesis of D-serine from L-serine
Synonyms:	ILV1; ISO1
Protein Pathways:	Glycine, serine and threonine metabolism

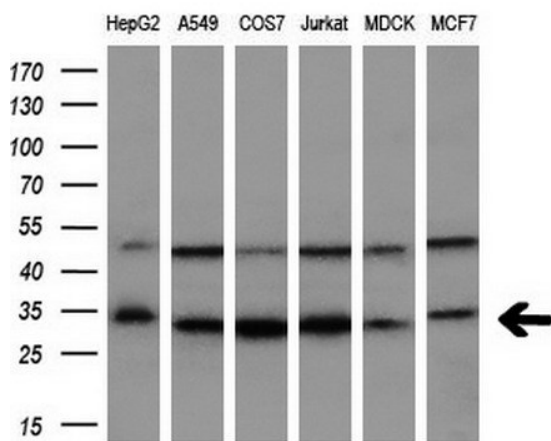


[View online »](#)

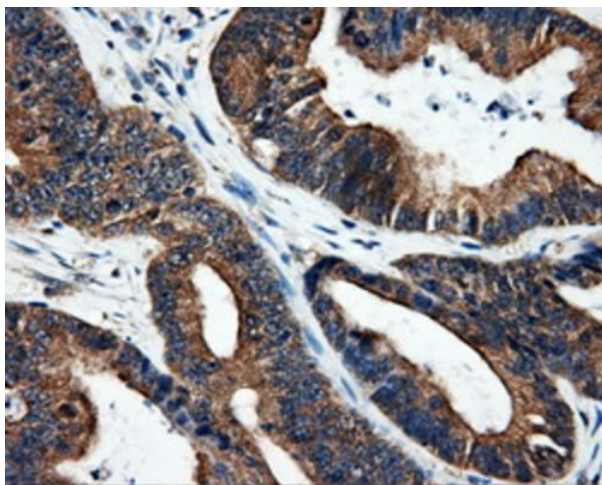
Product images:



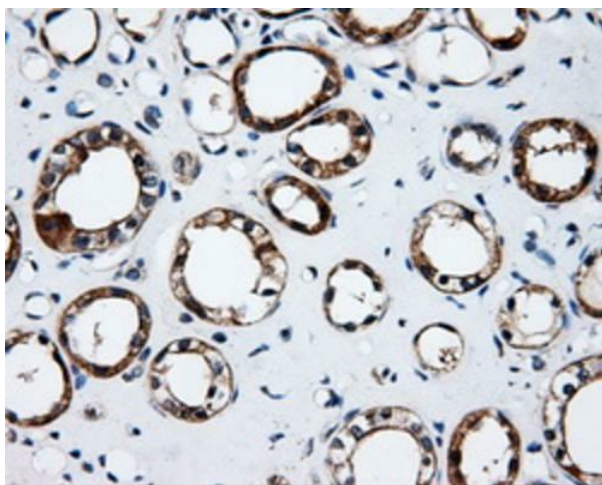
HEK293T cells were transfected with the pCMV6-ENTRY control (Left lane) or pCMV6-ENTRY SRR ([RC210359], Right lane) cDNA for 48 hrs and lysed. Equivalent amounts of cell lysates (5 ug per lane) were separated by SDS-PAGE and immunoblotted with anti-SRR. Positive lysates [LY402897] (100ug) and [LC402897] (20ug) can be purchased separately from OriGene.



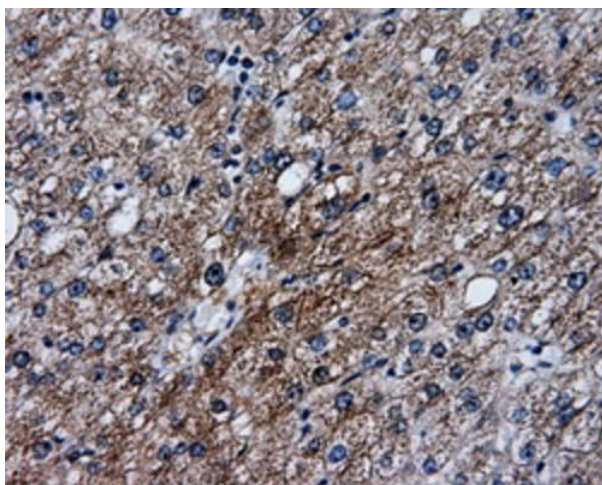
Western blot analysis of extracts (10ug) from 6 different cell lines by using anti-SRR monoclonal antibody (1:200).



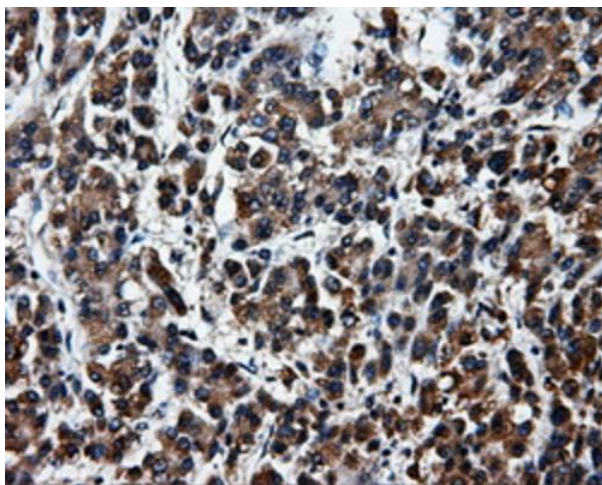
Immunohistochemical staining of paraffin-embedded Adenocarcinoma of colon tissue using anti-SRR mouse monoclonal antibody. Heat-induced epitope retrieval by EDTA solution buffer pH 8.0 at 120°C for 3 min.



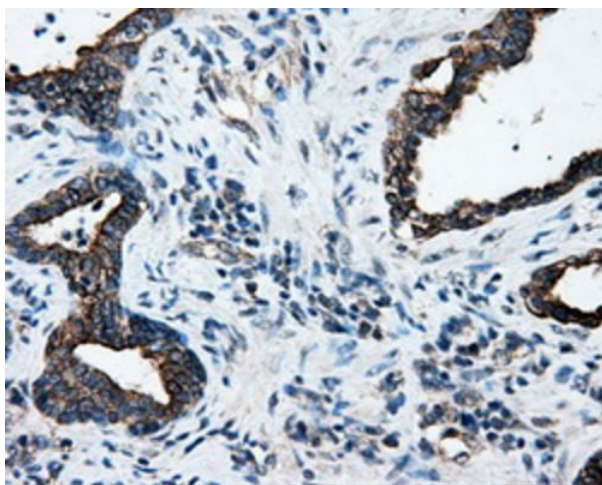
Immunohistochemical staining of paraffin-embedded Kidney tissue within the normal limits using anti-SRRmouse monoclonal antibody. Heat-induced epitope retrieval by EDTA solution buffer pH 8.0 at 120°C for 3 min.



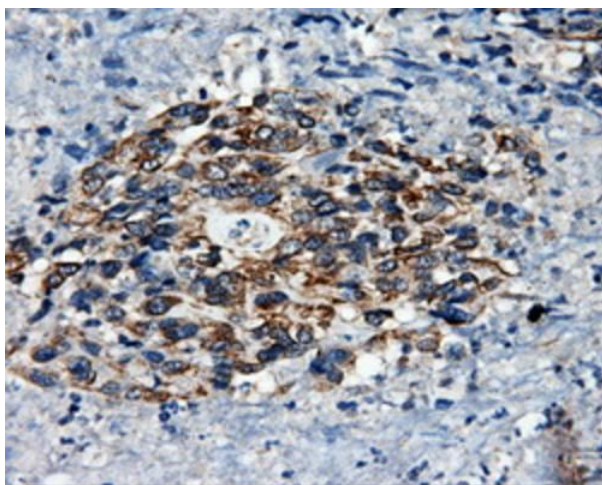
Immunohistochemical staining of paraffin-embedded liver tissue within the normal limits using anti-SRRmouse monoclonal antibody. Heat-induced epitope retrieval by EDTA solution buffer pH 8.0 at 120°C for 3 min.



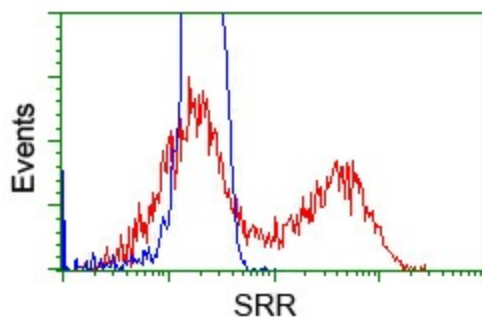
Immunohistochemical staining of paraffin-embedded Carcinoma of liver tissue using anti-SRRmouse monoclonal antibody. Heat-induced epitope retrieval by EDTA solution buffer pH 8.0 at 120°C for 3 min.



Immunohistochemical staining of paraffin-embedded Carcinoma of prostate tissue using anti-SRR mouse monoclonal antibody. Heat-induced epitope retrieval by EDTA solution buffer pH 8.0 at 120°C for 3 min.



Immunohistochemical staining of paraffin-embedded Carcinoma of bladder tissue using anti-SRR mouse monoclonal antibody. Heat-induced epitope retrieval by EDTA solution buffer pH 8.0 at 120°C for 3 min.



HEK293T cells transfected with either pCMV6-ENTRY SRR ([RC210359]) (Red) or empty vector control plasmid (Blue) were immunostained with anti-SRR mouse monoclonal ([TA500942]), and then analyzed by flow cytometry.