

## Product datasheet for **CF500939**

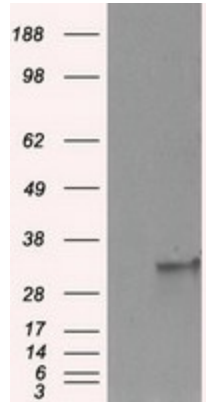
### FAHD2A Mouse Monoclonal Antibody [Clone ID: OTI6D9]

#### Product data:

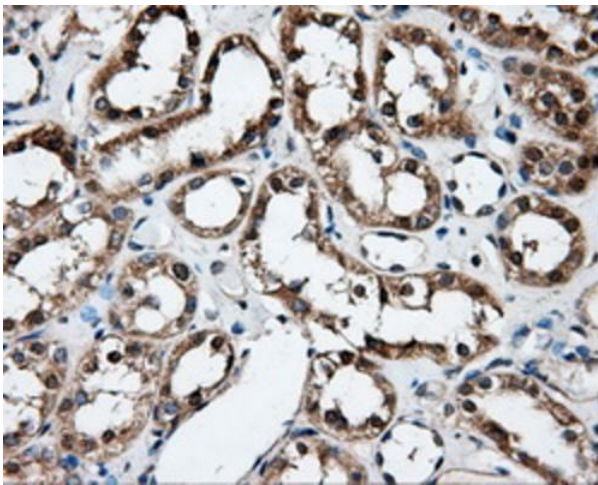
Product Type:	Primary Antibodies
Clone Name:	OTI6D9
Applications:	FC, IF, IHC, WB
Recommended Dilution:	WB 1:2000, IHC 1:50, IF 1:100, Flow 1:100
Reactivity:	Human
Host:	Mouse
Isotype:	IgG2b
Clonality:	Monoclonal
Immunogen:	Full length human recombinant protein of human FAHD2A (NP_057128) produced in HEK293T cell.
Formulation:	Lyophilized powder (original buffer 1X PBS, pH 7.3, 8% trehalose)
Reconstitution Method:	For reconstitution, we recommend adding 100uL distilled water to a final antibody concentration of about 1 mg/mL. To use this carrier-free antibody for conjugation experiment, we strongly recommend performing another round of desalting process. (OriGene recommends Zeba Spin Desalting Columns, 7KMWCO from Thermo Scientific)
Purification:	Purified from mouse ascites fluids or tissue culture supernatant by affinity chromatography (protein A/G)
Conjugation:	Unconjugated
Storage:	Store at -20°C as received.
Stability:	Stable for 12 months from date of receipt.
Predicted Protein Size:	34.6 kDa
Gene Name:	fumarylacetoacetate hydrolase domain containing 2A
Database Link:	<a href="#">NP_057128</a> <a href="#">Entrez Gene 51011 Human</a> <a href="#">Q96GK7</a>
Background:	May have hydrolase activity
Synonyms:	CGI-105



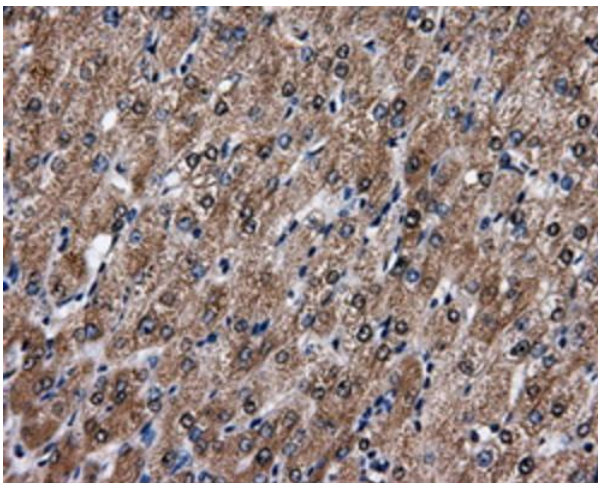
[View online »](#)

**Product images:**

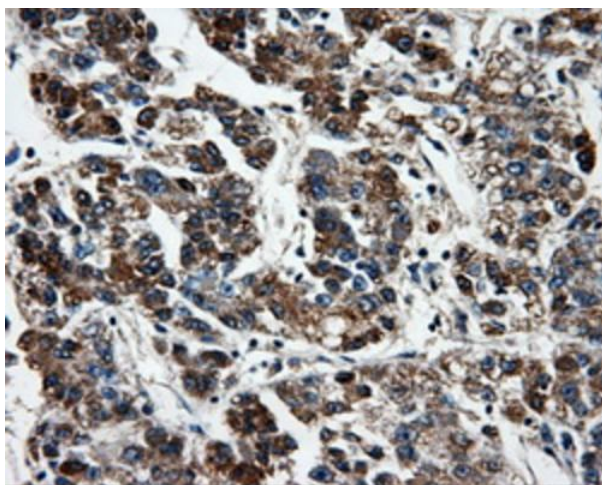
HEK293T cells were transfected with the pCMV6-ENTRY control (Cat# [PS100001], Left lane) or pCMV6-ENTRY FAHD2A (Cat# [RC211128], Right lane) cDNA for 48 hrs and lysed. Equivalent amounts of cell lysates (5 ug per lane) were separated by SDS-PAGE and immunoblotted with anti-FAHD2A (Cat# [TA500939]). Positive lysates [LY402492] (100ug) and [LC402492] (20ug) can be purchased separately from OriGene.



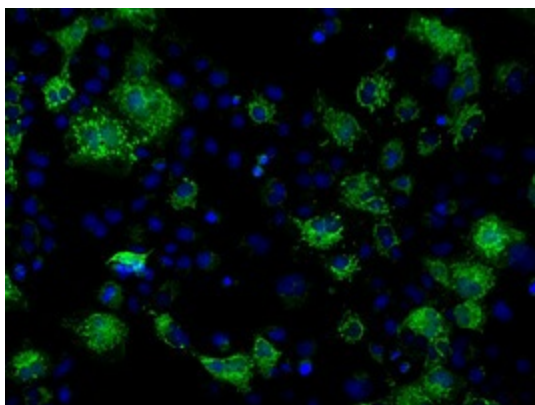
Immunohistochemical staining of paraffin-embedded kidney tissue within the normal limits using anti-FAHD2A mouse monoclonal antibody. Heat-induced epitope retrieval by EDTA solution buffer pH 8.0 at 120°C for 3 min.



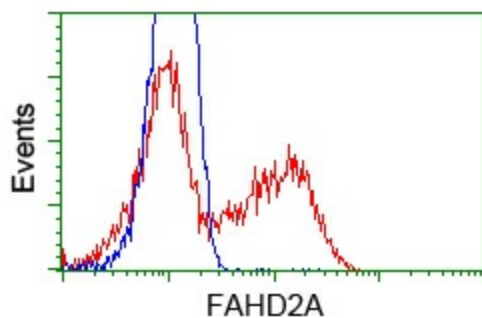
Immunohistochemical staining of paraffin-embedded liver tissue within the normal limits using anti-FAHD2A mouse monoclonal antibody. Heat-induced epitope retrieval by EDTA solution buffer pH 8.0 at 120°C for 3 min.



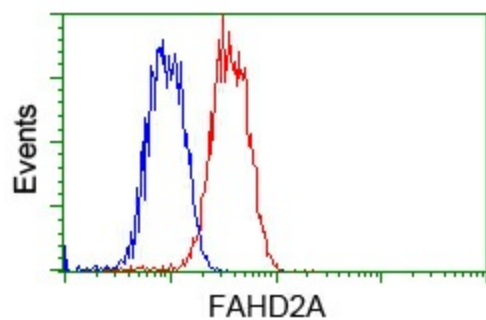
Immunohistochemical staining of paraffin-embedded Carcinoma of liver tissue using anti-FAHD2A mouse monoclonal antibody. Heat-induced epitope retrieval by EDTA solution buffer pH 8.0 at 120°C for 3 min.



Anti-FAHD2A mouse monoclonal antibody (TA500939) immunofluorescent staining of COS7 cells transiently transfected by pCMV6-ENTRY FAHD2A (RC211128).



HEK293T cells transfected with either pCMV6-ENTRY FAHD2A (RC211128) (Red) or empty vector control plasmid (Blue) were immunostained with anti-FAHD2A mouse monoclonal (TA500939), and then analyzed by flow cytometry.



Flow cytometric analysis of Jurkat cells, using anti-FAHD2A antibody ([TA500939]), (Red) compared to a nonspecific negative control antibody (TA50011) (Blue).